



POLARTECH.

DRY ICE BLASTING WITH CO₂



DRY ICE BLASTING

When using Dry Ice as a cleaning medium it has many special advantages over High Pressure Cleaning or Sandblasting.

- Dry Ice is solid at -79°C . You can blast clean without leaving residue or liquid behind. Dry Ice simply 'sublimes' directly back into CO_2 gas leaving no polluted water, sand, grit or other blasting media to dispose of - the only disposable item is the cleaned off dirt from your cleaned subject.
- A combination of cold and expanding gas effects, serve to flush contaminants off the substrate without being abrasive or using solvents or toxic chemicals.
- Complex protection, disassembly and re-assembly can often be avoided which results in huge job time reductions and improved quality.
- Applications range from gentle mild cleaning of extremely delicate and difficult to clean subjects such as the cleaning of fire-damaged articles, electrical installations and biological mold removal, to heavy industrial cleaning projects such as cast mold cleaning in tire production, cleaning the printing rolls in a printing works and many more.
- The potential is huge with Dry Ice Blasters!



POLARTECH.

OUR UNIQUE SOLUTION



- Non conductive.
- Non toxic.
- No wear & tear.
- No secondary waste.
- No dismantling.
- Efficiency, up to 80 % faster.
- Environmentally friendly.
- Health & safety.



POLARTECH.

POLARTECH PRODUCT RANGE

DRY ICE BLASTING



POLARTECH PT-PROsi
Combination of pellets and snow



POLARTECH PT-PROs
for snow



POLARTECH PT-PROi
for pellets



POLARTECH PT-MINIi
Small and compact for pellets



POLARTECH.

BLASTING GUNS



Two types of blasting guns with a wide range of different nozzle

POLARTECH PT-MINIi



TECHNICAL DATA:

Dimension L x W x H:	400 x 409 x 476 mm
Weight:	26 kg
Air flow range:	0,6-3 m ³ /min.
Blast pressure range:	2-10 bar
Tank capacity:	8 kg
Pellet consumption:	25 kg/hour.
Power supply:	110V-230V / AC 50-60 Hz
Air quality:	Dry and free of oil and particles.
Noise:	60-120 dB (A) depending on nozzle and pressure.

STANDARD EQUIPMENT: PT-MINIi COMPLETE SET

- Blasting gun
- 5 m. blasting hose incl. quick safety coupling
- * electric connection
- * Protective sleeve
- 10 m. electrical cord
- 3 m. antistatic cord
- 10 m. ½" air supply hose, incl. couplings
- 1 pcs. standard plastic round nozzle Ø7 mm



POLARTECH.

POLARTECH PT-PROi



TECHNICAL DATA:

Dimension L x W x H:	970 x 520 x 670 mm
Weight:	70 kg
Air flow range:	0,8-9 m ³ /min.
Blast pressure range:	2-14 bar
Tank capacity:	25 kg
Pellet consumption:	0-75 kg/hour (variable).
Power supply:	110V-230V / AC 50-60 Hz
Air quality:	Dry and free of oil and particles.
Noise:	60-120 dB (A) depending on nozzle and pressure.

STANDARD EQUIPMENT: PT-PROi COMPLETE SET

- Adjustment of air pressure.
- Adjustment of pellet consumption.
- Safety switch.

Blasting gun, ice/granulate

Blasting hose: 3/4", 5 m. with quick safety coupling.

With Electrical connection and Protective sleeve.

Air supply hose: 10 m. 3/4" with claw coupling.

Electrical cord: 10 m.

1 pcs. standard plastic round nozzle Ø7 mm



POLARTECH.

POLARTECH PT-PROs



TECHNICAL DATA:

Dimension L x W x H:	710 x 520 x 970 mm
Weight:	53 kg
Air flow range:	1-5 m ³ /min.
Blast pressure range:	2-10 bar
Liquid CO ₂ consumption:	0,25-1,5 kg/pr. min. (variable feed).
Liquid CO ₂ operating press:	20-70 bar
Power supply:	110V-230V / AC 50-60 Hz
Air quality:	Dry and free of oil and particles.
Noise:	60-120 dB (A) depending on nozzle and pressure.

STANDARD EQUIPMENT: PT-PROs

- Adjustment of air pressure.
- Adjustable feed of CO₂.
- Safety switch.

Blasting gun for snow/CO₂

5 m. blasting hose incl. quick safety coupling

With CO₂ hose incl. couplings, Electric connection and Protective sleeve

10 m. electrical cord

10 m. air supply hose, incl. couplings

1,5 m. CO₂ supply hose, incl. couplings

1 pcs. standard plastic round nozzle Ø7 mm



POLARTECH.

POLARTECH PT-PROsi



TECHNICAL DATA:

Dimension L x W x H:	710 x 520 x 970 mm
Weight:	53 kg
Air flow range:	1-5 m ³ /min.
Blast pressure range:	2-10 bar
Liquid CO ₂ consumption:	0,25-1,5 kg/pr. min. (variable feed).
Liquid CO ₂ operating press:	20-70 bar
Power supply:	110V-230V / AC 50-60 Hz
Air quality:	Dry and free of oil and particles.
Noise:	60-120 dB (A) depending on nozzle and pressure.

STANDARD EQUIPMENT: PT-PROsi COMPLETE SET

- Adjustment of air pressure.
- Adjustment of pellet consumption.
- Adjustable feed of CO₂.
- Safety switch.

Blasting gun for snow/CO₂

5 m. blasting hose incl. quick safety coupling

With CO₂ hose incl. couplings, Electric connection and Protective sleeve

10 m. electrical cord

10 m. air supply hose, incl. couplings

1,5 m. CO₂ supply hose, incl. couplings

1 pcs. standard plastic round nozzle Ø7 mm



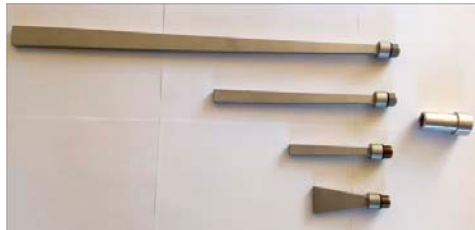
POLARTECH.

EXTRA NOZZLES



STAINLESS STEEL NOZZLES

Long bended nozzles, 45, 90, 120 deg.



STAINLESS STEEL NOZZLES:

Flat nozzle 580 / 25 / entry 5, 6, 7, 8 mm

Flat nozzle 270 / 14 / entry 5, 6, 7, 8 mm

Flat nozzle 160 / 10 / entry 5, 6, 7, 8 mm

Flat nozzle 100 / 40 / entry 8 mm

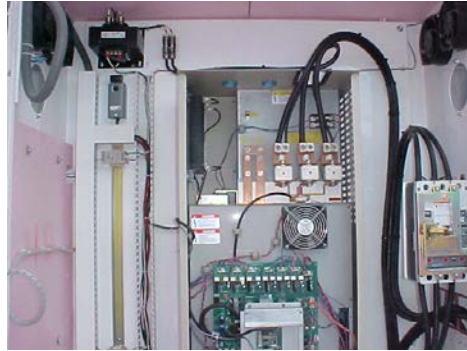
PT 1000114 Nozzle adapter (fits all)



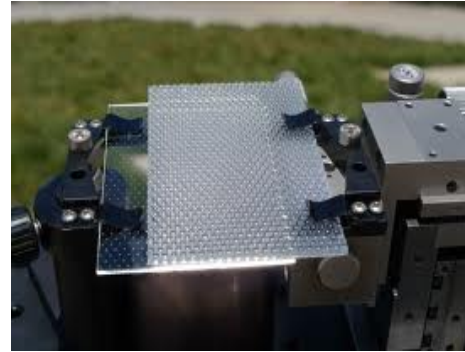
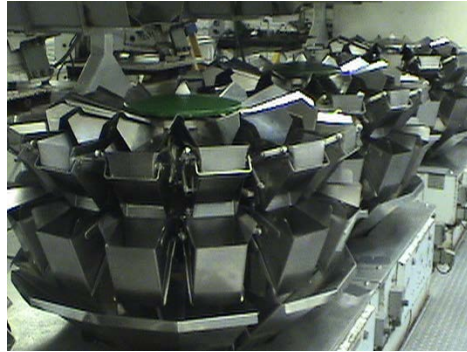
POLARTECH.

APPLICATIONS

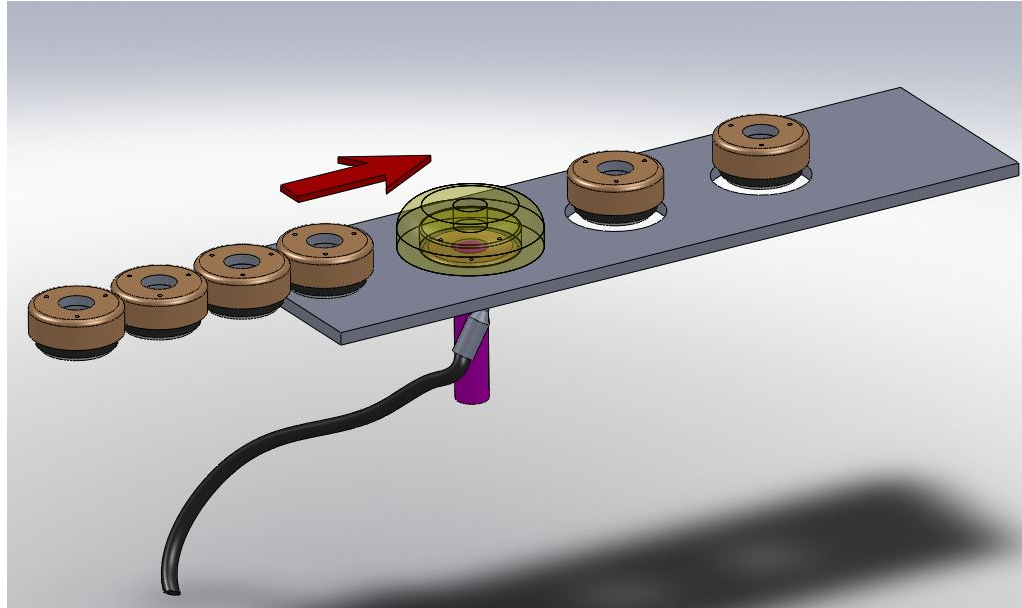
SWITCHBOARDS



MOLD,
FIRE,
FLOODING



ROBOTIC SYSTEM



BEFORE & AFTER

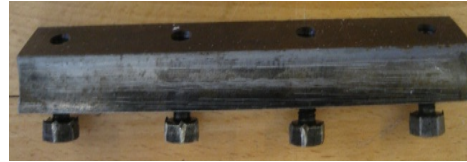


BEFORE & AFTER



POLARTECH.

BEFORE & AFTER



POLARTECH.



BEFORE & AFTER



POLARTECH.

