

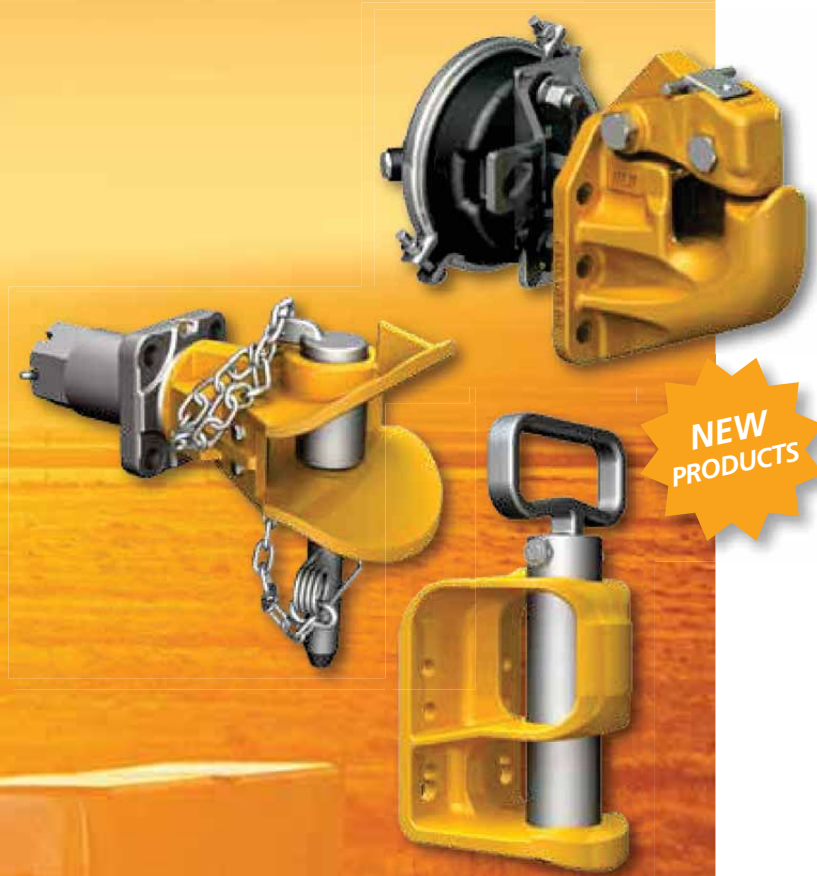
2012



SAF-HOLLAND Group

HOLLAND COUPLING PRODUCTS

PINTLE HOOK, COUPLER AND DRAWBAR CATALOG AND SPECIFICATION GUIDE



XL-PH10397SG-en-US Rev B



YOUR COMPLETE SOURCE FOR COMMERCIAL VEHICLE PRODUCT SOLUTIONS



In 2006, two industrial icons merged to form SAF-HOLLAND, a global leader in the design and manufacture of high-quality components and systems for the commercial vehicle industry. Today, SAF-HOLLAND represents a range of brands providing suspension/axle systems, fifth wheels, kingpins, coupling products, landing gear and liftgate solutions for truck, tractor, bus, and trailer applications.



SAF-HOLLAND Group

- FIFTH WHEELS
- LANDING GEAR
- KINGPINS
- COUPLINGS
- LIFTGATES



SAF-HOLLAND Group

- MECHANICAL SUSPENSION/
AXLE SYSTEMS
- TRAILER AXLES/BRAKES
- AIR-RIDE SUSPENSION/
AXLE SYSTEMS
- KINGPINS



SAF-HOLLAND Group

- SEVERE-DUTY VOCATIONAL
AIR-RIDE SUSPENSIONS
- BUS AIR-RIDE SUSPENSIONS
- STEER AIR-RIDE
SUSPENSIONS



www.safholland.com



Reference Sections

Part Number Index 2
Replacement Parts Numbers 4
National Stock Number (NSN) Reference Chart 4
Coupling Products by Mounting Type and Rated Capacities 5
Identifying Marks on Pintle Hooks, Couplers and Drawbars 6
Drawbar Compatibility Chart 42
General Safety Information 60
Coupling System Selection 62
Operating Conditions 63
Cushioning Systems 63
Mounting Information 64
Glossary 65

Pintle Hooks

Rigid Mount

BH-200RN41 & BH-50mmRN41 8
PH-10RP 9
PH-T-60-AOL-8 & PH-T-60-S10646 10
PH-30RP 11

Swivel Mount

PH-30SA 12
PH-30SB 13
PH-T-60-AOS-L-8 14
PH-760 15
PH-775-01552 16
PH-775SL 17

Rigid Mount - Air Cushioned

PH-300 & PH-300-R 18
PH-210 19
PH-310 20
PH-400 & PH-400-H 21
PH-410 22
PH-550 23
PH-419 24
Air Chamber Assemblies and Mounting Kits 26

Couplers

CP-400-H 28
CP-360 29
CP-740 & CP-730 30
PH-990ST71 31
PH-995SH71 32
PH-775 and PH-995 Interchangeability 33

Ball Hitch

BH-50 34

Couplings (non-road) for Industrial/GSE

CP-400-GSE & CP-400-CA 36
XA-T-150-AF and CP-T-150-S02986 37
EH-3050 38
EH-20/40/60 Replacement Parts 39
DB-010EJ1 & DB-020FK1 40

Drawbars

DB-1250-3 44
DB-1249-2H 44
DB-040DQ1 45
DB-060FQ1 45
DB-100FQ1 45
DB-1228-1 46
DB-1238 46
DB-1245-1 46
DB-1235-1 46
DB-1235-3 46
DB-1400 48
DB-1422 48
DB-1400AC (Air Cushioned) 49
DB-1407 Series 50
DB-1407-SE 51
DB-1407-S 51
DB-045BW1 52
DB-45BS1 52
DB-610-30 53
DB-1249-49 53

Coupling Products & Accessories

Drawbar Guides 56
Pintle Hook Wear Gages 56
Plunger Adjustment Gages 56
Tow Hooks 57
Drawbar Hinge and Frame Brackets 57
Dolly Master 58

Part Number Index



SAF-HOLLAND Group

PART NUMBER	PAGE NO.
AA-52550-1	6
AA-52550-2	6
AA-52550-4	6
AA-55220-3 74410	6
BH-200RN	5, 42
BH-200RN41	8
BH-200RN51	4
BH-200RN8	39
BH-50	5, 34
BH-50mmRN	5, 39, 42
BH-50mmRN41	8
CP-360	4, 5, 6, 29, 42
CP-360-S01340	4
CP-380	6
CP-380-A	6
CP-400-5A	6
CP-400-CA	5, 6, 36
CP-400-GSE	5, 6, 36, 42
CP-400-H	5, 6, 28, 42
CP-400-S04729	4
CP-730	5, 30, 42
CP-730-S05745	4
CP-740	5, 6, 30, 42
CP-T-150-S02986	37
DB-010EJ1	5, 6, 40, 42
DB-020FK1	5, 6, 40, 42
DB-030DQ1	6, 42
DB-040DQ1	5, 6, 45, 42
DB-045BS1	5, 52, 43
DB-045BW1	5, 6, 52, 43
DB-060FQ1	4, 5, 6, 45, 43
DB-100FQ1	5, 6, 45, 43
DB-1228-1	5, 6, 42, 46, 47
DB-1235-1	4, 5, 6, 42, 46, 47
DB-1235-3	5, 6, 42, 46, 47
DB-1238	4, 5, 6, 42, 46, 47
DB-1245-1	5, 6, 42, 46, 47
DB-1249-2H	4, 5, 6, 42, 44
DB-1249-49	4, 5, 6, 42, 53
DB-1249-S06588	4
DB-1250-3	4, 5, 6, 42, 44
DB-1385	4
DB-1400	5, 6, 43, 48
DB-1400AC	5, 6, 43, 49, 63
DB-1400AC-1	6, 49
DB-1400AC-2	6, 49
DB-1400AC-3	6, 49
DB-1400AC-4	6, 49
DB-1407	5, 50
DB-1407-L-1	50, 43
DB-1407-S	5, 6, 43, 51
DB-1407-S-1	43, 50
DB-1407-SE	5, 6, 43, 51
DB-1407-SE-1	43, 50
DB-1422	5, 6, 43, 48
DB-610-30	4, 5, 6, 43, 53, 63
EH-20/40/60	39
EH-3050	5, 38, 39, 42
MH-1800-D	6
PH-10RP	5, 39, 42, 56
PH-10RP41	9
PH-16-B	4, 6
PH-200	6, 56
PH-200-1	
PH-207A	
PH-210	5, 6, 19, 26, 42, 56, 63
PH-210RA11	19, 26
PH-210RA21	19

PART NUMBER	PAGE NO.
PH-210RF11	26
PH-210RM11	19, 26
PH-210RN11	19, 26
PH-210RN21	19
PH-30	4, 6, 56
PH-300	5, 6, 18, 26, 42, 56, 63
PH-300-1	17, 26
PH-300-R	5, 18, 26, 42, 63,
PH-300-R-1	17, 26
PH-30RP	5, 39, 42, 56
PH-30RP41	6, 11
PH-30RP51	4, 11
PH-30SA	5, 42, 56, 63
PH-30SA41	12, 63
PH-30SA51	12
PH-30SB	5, 42, 56, 63
PH-30SB41	13
PH-30SB51	13
PH-310	5, 6, 20, 26, 42, 56, 63
PH-310RA11	20, 26
PH-310RA21	20
PH-310RF11	26
PH-310RM11	20, 26
PH-310RN11	20, 26
PH-310RN21	20
PH-35	6, 56
PH-400	5, 6, 21, 26, 42, 56, 63
PH-400-1	26
PH-400-1-H	26
PH-400-H	5, 6, 21, 26, 42, 56, 63
PH-410	5, 6, 22, 25, 42, 56, 63
PH-410RA11	26, 22
PH-410RA21	22
PH-410RF11	26
PH-410RM11	26, 22
PH-410RN11	26, 22
PH-410RN21	22
PH-419	5, 6, 22, 24, 25, 26, 42, 56, 63
PH-419RA11	24, 26
PH-419RA21	24
PH-419RF11	26
PH-419RM11	24, 26
PH-419RN11	24, 26
PH-419RN21	24
PH-550	5, 26, 42, 56, 63
PH-550-1	26
PH-75	4
PH-760	5, 6, 15, 42, 56
PH-760M-A	4
PH-760M-X	4
PH-775	5, 16, 42, 56
PH-775-01552	4, 16, 33
PH-775-D	33, 16
PH-775-E	4
PH-775SL11	6, 17, 63
PH-775SL21	4, 6, 17
PH-775SN11	33, 17
PH-775SN21	33, 17
PH-990ST71	5, 6, 31, 42
PH-995SH71	5, 16, 32, 33, 42
PH-995SN71	33
PH-T-100-A	6
PH-T-125-A	6
PH-T-126-A	6, 56
PH-T-370	4
PH-T-60-AL	4, 6
PH-T-60-AOL-8	4, 5, 6, 10, 39, 42, 56

PART NUMBER	PAGE NO.
PH-T-60-AOS-L-8	4, 5, 6, 14, 42, 56
PH-T-60-C	4
PH-T-60-S08350	4
PH-T-60-S10646	10
PH-T-90-A	6, 56
RK-02536	18, 21
RK-02772	15
RK-03179	18
RK-05961	15
RK-06683	34
RK-1020	57
RK-10244-A	39
RK-10291	31, 32
RK-10545	17, 19, 20, 22, 24
RK-10545-1	17, 19, 20, 22, 24
RK-10632	9, 11, 12, 13
RK-10632-1	9, 11, 12, 13
RK-10636	8
RK-10636-1	8
RK-11438	39
RK-11439	39
RK-11440	39
RK-11510	17
RK-62-O	10, 14
RK-775	16
RK-S10646	10
RK-T-150-S02986	37
RK-T-551	31
RK-T-61	14
TF-03147	56
TF-03147-10	56
TF-10520	56
TF-10521	56
TF-10522	56
TF-10523	56
TF-10612	56
TF-10960	56
TF-11402	56
TF-675	56, 63
TF-675-1	58
TH-10050-3	57
TH-10050-3B	57
TH-10050-3L	57
TH-10050-3R	57
TH-10050-5	57
TH-10050-5B	57
TH-10050-5L	57
TH-10050-5R	57
XA-01154	29
XA-01740	30
XA-02234	34
XA-02235	34
XA-02240	34
XA-02241	34
XA-02555	56
XA-02556	56
XA-02608	18, 19, 20, 21, 22, 24, 26
XA-02721	34
XA-04108	34
XA-04156	18, 19, 20, 21, 22, 24, 26
XA-04297	49
XA-04337	34
XA-04430	34
XA-05263	34
XA-05264	34
XA-05490	23
XA-05491	23
XA-05492	23



PART NUMBER	PAGE NO.
XA-05494	23
XA-05738	30
XA-05739	30
XA-05740	30
XA-05754	23, 26
XA-05798	51
XA-05799	51
XA-05807	51
XA-05809	51
XA-05833-S	51
XA-05833-SE	51
XA-06101	29, 30
XA-07760	29
XA-07839	58
XA-08361	58
XA-08364	58
XA-08370	58
XA-08375	58
XA-08636	15
XA-09862	23, 26
XA-10008	31, 32
XA-10198	26
XA-10244-A	39
XA-10286	31
XA-10287	31, 32
XA-10546	17, 33
XA-10802-F	12
XA-10802-R	12
XA-10891	13
XA-11042	30
XA-1403	49
XA-1404-1	49
XA-1404-2	49
XA-1404-3	49
XA-1404-4	49
XA-199-1	10, 14
XA-199-4	16
XA-199-6	15
XA-211	36
XA-2524-R-12	58
XA-2524-R-13-1	58
XA-392	29
XA-393	29
XA-394	29
XA-401-X1	36
XA-401-X3	28
XA-402-X1	28, 36
XA-404-X	28, 36
XA-610-23	52, 53
XA-686	58
XA-687	58
XA-694	58
XA-732	30
XA-736	15, 30
XA-736-A	15
XA-749-1	16, 32, 33
XA-766-2Z	16
XA-768	15
XA-780-1	17
XA-782	16, 17, 32
XA-T-150-AF	37
XA-T-2	37
XA-T-317-8	31
XA-T-361	31
XA-T-362	31
XA-T-56	12, 44
XA-T-60-A	6
XA-T-88	14, 29, 30

PART NUMBER	PAGE NO.
XB-01996	58
XB-02724	34
XB-02745	34
XB-03103	18, 21, 23
XB-03104	17, 18, 19, 20, 21, 22, 23, 24
XB-03731	30
XB-0437	31, 32
XB-04473	28, 36
XB-04847	37
XB-05493	23
XB-05496	23
XB-05497	23
XB-05498	23
XB-05499	23
XB-05514	34
XB-05679-2	58
XB-05788	50, 51
XB-05789	50, 51
XB-05808	51
XB-05813	51
XB-05825	23
XB-06134	23
XB-06150	30
XB-06181	36
XB-0839	58
XB-10089	15
XB-10109	28, 36
XB-1020	
XB-10245	39
XB-1031	58
XB-10537	17, 19, 20, 22, 24
XB-10738	31, 32
XB-11048	8, 9, 10, 11, 12, 13, 14
XB-11157	8, 9, 10, 11, 12, 13
XB-120-2	16
XB-121	44, 52, 53
XB-127	15
XB-128	15
XB-16594	49
XB-165945	18, 29, 20, 21, 22, 23, 24, 26
XB-166321	26
XB-196-3	23
XB-21-S-187-1250	30
XB-21-S-250-1250	34
XB-21-S-312-1250	30
XB-21-S-375-1750S	39
XB-21-S-500-1000	30
XB-3094	29
XB-3547	34
XB-382	28, 36
XB-403	28, 30, 36
XB-5	29
XB-639	34
XB-646	37
XB-698	58
XB-708	28, 36
XB-757	16
XB-758	14
XB-767	12, 14, 15, 16, 29, 30, 32, 52, 53
XB-767-10	16
XB-770-1	31
XB-771-1	15
XB-772	15
XB-773	14, 15
XB-780-1	16, 31, 32
XB-781-1	16, 17, 32

PART NUMBER	PAGE NO.
XB-C-375-C-125	58
XB-C-375-C-150	34
XB-C-95	58
XB-E-540	58
XB-E-552-1	16
XB-H-38	34
XB-HNH-34-F	15
XB-PWM-38-78	34
XB-S10647	17, 19, 20, 22, 24
XB-T-199	18, 19, 20, 21, 22, 23, 24, 26
XB-T-20-2	13, 29, 30
XB-T-306	31
XB-T-307	31
XB-T-316-A	44, 52, 53
XB-T-318	44, 50, 52, 53
XB-T-33-A	29
XB-T-361	31
XB-T-362	31
XB-T-377	29
XB-T-45-1	14
XB-T-52	12, 13
XB-T-56	12, 13
XB-T-60	12, 13, 15, 30, 44
XB-T-61	31, 32, 58
XB-T-69-A	58
XB-T-69-C	8, 13, 58
XB-T-89	14
XB-T-89-4	8, 9, 10, 11, 12, 13, 14
XB-T-992	31, 32
XB-T-993	31, 32
XB-T-993-1	31, 32
XB-T-9N	12, 13, 44
XB-TLN-1000-7	31, 32
XD-01155-1	6
XD-02275-1	6
XD-02384-2	6
XD-10286	6
XD-10570	6
XD-10572	6
XD-10573	6
XD-11047	56
XD-11047-10	56
XD-11231	6
XD-361	6
XD-380	6
XD-400	6
XD-400-5-1	6
XD-5275	57
XD-5315	57
XD-731	6
XE-01544-1	18, 19, 20, 21, 22, 23, 24, 26
XE-02137-HLH	6
XE-10373	6
XE-10634	56
XE-1228	6
XE-1230	6
XE-1235	6
XE-1245	6
XE-1249	6
XE-1249-2H-10	6
XE-1249-48	6
XE-1385	6
XE-T-87	6
XE-T-91	6
XW-1235	6
XW-1249-48	6

Replacement Part Numbers & NSN Reference Chart



SAF-HOLLAND Group

Replacements for Discontinued Models

Discontinued	Replaced By	Discontinued	Replaced By
CP-380	CP-400-CA	PH-200	PH-210RA11
CP380-A	CP-400-H	PH-200-1	PH-210RN11
CP-400-5A	XA-T-150-AF*	PH-207A	Discontinued
DB-1250-15	DB-040DQ1	PH-30	PH-30RP41
DB-1307-S	Discontinued	PH-75	Discontinued
DB-1385	DB-060FQ1	PH-T-60-AL	PH-10RP51
EH-20/40	EH-3050	PH-T-90-A & PH-T-100-A	PH-30SA41
PH-16-B	BH-200RN51	PH-T-125-A & PH-T-126-A	PH-30SB41

* Mounting hole pattern different

National Stock Number* (NSN) Reference Chart

*also referred to as 'NATO' Stock Number

HOLLAND Cage Code – 74410

HOLLAND Casting Code – HLH

NSN	DESIGNATED HOLLAND MODEL NUMBER	MODEL STATUS	CURRENT HOLLAND MODEL
PINTLE HOOKS			
2540012653887	PH-16-B	Obsolete	BH-200RN51
2540006519484	PH-T-60-C	Obsolete	No Replacement
2540007072564	PH-T-370	Active (special order)	PH-T-370
2540007760103	PH-760M-X Series	Active	PH-760M-S Series
2540008359039	PH-30	Obsolete	PH-30RP51
	PH-T-60-AOL-8	Active	PH-T-60-AOL-8
2540008916831	PH-T-60-AL	Obsolete	PH-10RP51
2540012819723	PH-75	Obsolete	No Replacement
2540013373725	PH-760M-A Series	Active	PH-760M-A Series
2540013768063	PH-T-60-AOS-L-8	Active	PH-T-60-AOS-L-8
2540013892221	PH-T-60-AOL-8	Active	PH-T-60-AOL-8
2540014759206	PH-775-E	Active	PH-775-E
2540015070802	PH-775-01552	Active	PH-775-01552
2540015306881	PH-T-60-S08350	Spec'd no paint – Contact SAF-HOLLAND for information	
2540015584395	PH-775SL21	Active	PH-775SL21
COUPLERS			
2540012137842	CP-360	Active	CP-360
2540004999407	CP-400-5A	Active	CP-400-5A
2540007687455	CP-400-CA	Active	CP-400-CA
2540011460115	CP-400-S04729	Active	CP-400-S04729
2540012058577	CP-360-S01340	Active	CP-360-S01340
2540013594964	CP-730-S05745	Active	CP-730-S05745
DRAWBARS			
2540011647252	DB-060FQ1	Active	DB-060FQ1
2540011647252	DB-1385	Obsolete	DB-060FQ1
2540011924699	DB-1238	Active	DB-1238
2540012356865	DB-1235-1	Active	DB-1235-1
2540013825836	DB-1249-S06588	Active	DB-1249-S06588
2540014619306	DB-1250-3	Active	DB-1250-3
2540014886221	DB-610-30	Active	DB-610-30
5306011974369	DB-1249-2H	Active	DB-1249-2H
5306012698693	DB-1249-49	Active	DB-1249-49



SAF-HOLLAND Group

Coupling Products by Mounting Type and Rated Capacities

MODEL	MOUNT	MAXIMUM VERTICAL LOAD		MAXIMUM GROSS TRAILER WEIGHT		MAXIMUM GROSS TRAILER WEIGHT WITH A MAXIMUM VERTICAL LOAD OF 500 LB. (227 KG)	
		lb.	kg	lb.	kg	lb.	kg
PINTLE HOOKS							
BH-200RN / BH-50mmRN	Rigid - Hook Rating	4,000	1,814	20,000	9,072		
	Rigid - Ball Rating	1,000	454	10,000	4,536		
PH-10RP	Rigid	2,000	907	10,000	4,536		
PH-T-60-AOS-L-8	Swivel	3,600	1,633	18,000	8,165		
PH-T-60-AOL-8	Rigid	6,000	2,722	30,000	13,608		
PH-30RP	Rigid	6,000	2,722	30,000	13,608		
PH-30SA	Swivel	6,000	2,722	30,000	13,608		
PH-30SB	Swivel	6,000	2,722	30,000	13,608		
PH-760	Swivel	9,800	4,445	49,000	22,226		
PH-775	Swivel	20,000	9,072	100,000	45,360		
'AIR CUSHIONED' PINTLE HOOKS							
PH-300 / PH-300-R	Rigid	18,000	8,165	72,000	32,659		
PH-210	Rigid	18,000	8,165	90,000	40,824		
PH-310	Rigid	20,000	9,072	100,000	45,360		
PH-400 / PH-400-H	Rigid	20,000	9,072	100,000	45,360		
PH-410	Rigid	20,000	9,072	100,000	45,360		
PH-419	Rigid	20,000	9,072	100,000	45,360		
PH-550	Rigid	25,000	11,340	100,000	45,360		
COUPLERS – DROP JAW							
CP-400-H	Rigid	7,500	3,402	30,000	13,608		
CP-360	Rigid	3,000	1,361	52,000	23,587		
CP-730	Swivel	20,000	9,072	100,000	45,360		
CP-740	Rigid	20,000	9,072	100,000	45,360		
COUPLERS – PIN & CLEVIS							
PH-990ST71	Swivel	3,000	1,361	100,000	45,360		
PH-995SH71	Swivel	3,000	1,361	100,000	45,360		
BALL HITCH							
BH-50		8,000	3,629	80,000	36,288		
COUPLINGS (NON-ROAD) FOR INDUSTRIAL / GSE							
CP-400-GSE / CP-400-CA	Rigid	7,500	3,402	30,000	13,608		
EH-3050	Rigid	500	227	50,000	22,680		
DB-010EJ1	Weld-On	2,000	907	10,000	4,536	20,000	9,072
DB-020FK1	Weld-On	4,000	1,814	20,000	9,072	40,000	18,144
DRAWBARS							
DB-1250-3	Rigid Bolt-On	3,000	1,361	15,000	6,804	50,000	22,680
DB-1228-1	Rigid Bolt-On	4,000	1,814	20,000	9,072	60,000	27,216
DB-1238	Rigid Bolt-On	4,500	2,041	22,000	9,979	70,000	31,752
DB-1407-SE	Swivel Weld-On	500	227	34,000	15,422		
DB-1235-1	Rigid Bolt-On	7,000	3,175	35,000	15,876	90,000	40,824
DB-1235-3	Rigid Bolt-on	7,000	3,175	35,000	15,876	90,000	40,824
DB-1407-5	Swivel Weld-On	500	227	40,000	18,144		
DB-040DQ1	Rigid Bolt-On	8,000	3,629	40,000	18,144	60,000	27,216
DB-1245-1	Rigid Bolt-On	8,000	3,629	40,000	18,144	90,000	40,824
DB-1249-2H	Rigid Bolt-On	9,000	4,082	45,000	20,412	85,000	38,556
DB-1249-49	Rigid Bolt-On	9,000	4,082	45,000	20,412	85,000	38,556
DB-045BW1	Swivel Weld-On	9,000	4,082	45,000	20,412	85,000	38,556
DB-045BS1	Rigid Bolt-On	9,000	4,082	45,000	20,412	85,000	38,556
DB-610-30	Swivel Weld-On	9,000	4,082	45,000	20,412	85,000	38,556
DB-060FQ1	Rigid Bolt-On	15,000	6,804	60,000	27,216	90,000	40,824
DB-1407 Series	Rigid Bolt-On	16,000	7,258	85,000	38,556	120,000	54,432
DB-1400	Rigid Weld-On	18,000	8,165	90,000	40,824	120,000	54,432
DB-1422	Rigid Weld-On	18,000	8,165	90,000	40,824	120,000	54,432
DB-100FQ1	Rigid Bolt-On	20,000	9,072	100,000	45,360	125,000	56,700
DRAWBARS 'AIR CUSHIONED'							
DB-1400AC	Rigid Weld-On	18,000	8,165	90,000	40,824	120,000	54,432

Identifying Marks on Pintle Hooks, Couplers and Drawbars

PART NUMBER	MAIN FRAME NUMBER	DISTINGUISHING FEATURES
PH-16-B	XE-02137-HLH	2" Fixed Ball Duplex Hitch
PH-30	AA-52550-4	Has Push-Button Lock
PH-30RP41	AA-52550-4	Rigid Pintle Hook with 4-Bolt 1.75" x 2.38" Bolt Pattern
PH-35	AA-52550-1	Swivel Pintle Hook with Mounting Flanges
PH-200	XD-02384-2	7/8" 4-Bolt Mounting
PH-210	XD-10570	7/8" 4-Bolt Mounting
PH-300	XD-01155-1	7/8" 6-Bolt Mounting 1.88" x 6" Spacing
PH-310	XD-10572	7/8" 6-Bolt Mounting 1.88" x 6" Spacing
PH-400	XD-02275-1	7/8" 10-Bolt Mounting
PH-400-H	XD-02275-1	7/8" 8-Bolt Mounting
PH-410	XD-10573	7/8" 6-Bolt Mounting 2.38" x 5" Spacing
PH-419	XD-11231	7/8" 6-Bolt Mounting 2.38" x 5" Spacing
PH-760	AA-52550-2	3/4" 2-Bolt Mounting Flanges 6.5" Apart
PH-775SL11	AA-55220-3 74410	Swivel Pintle Hook with Housing
PH-775SL21	AA-55220-3 74410	Swivel Pintle Hook with Housing
PH-T-60-AL	XA-T-60-A	1/2" 4-Bolt Mounting 2.12" x 3.4" Bolt Pattern
PH-T-60-AOL-8	AA-52550-4	Has Cotter Pin and Chain Latch Lock
PH-T-60-AOS-L-8	AA-52550-1	Swivel Pintle Hook with Mounting Flanges
PH-T-90-A	XE-T-91	Swivel Pintle Hook with Mounting Flanges and Square Spring
PH-T-100-A	XE-T-87	Swivel Pintle Hook with Mounting Flanges and Round Spring
PH-T-125-A	XE-T-87	Swivel Pintle Hook - Undermount and Round Spring
PH-T-126-A	XE-T-91	Swivel Pintle Hook - Undermount and Square Spring
PH-990ST71	XD-10286	Swivel Pintle Hook with Housing and Large "Fish Mouth"
CP-360	XD-361	Rigid Coupler 6-Bolt Mounting
CP-380	XD-380	Rigid Coupler 4-Bolt 4.5" x 4.5"
CP-380-A	XD-380	Rigid Coupler 4-Bolt 4.5" x 4.5" Bolt Pattern and Secondary Lock
CP-400-5A	XD-400-5-1	Rigid Coupler 4-Bolt 1.5" x 3.25" Bolt Pattern
CP-400-CA	XD-400	Rigid Coupler 4-Bolt 4.5" x 4.5" Bolt Pattern
CP-400-GSE	XD-400	Rigid Coupler 4-Bolt 4.5" x 4.5" Bolt Pattern
CP-400-H	XD-400	Rigid Coupler 4-Bolt 4.5" x 4.5" Bolt Pattern with Secondary Lock
CP-740	XD-731	Rigid Couper with Hood
DB-010EJ1	DB-010EJ1	2.5" I.D. Eye with 2" x 4" Mounting Mase
DB-020FK1	MH-1800-D	3" I.D. Eye
DB-030DQ1	XE-10373	2.38" Eye with 4-Bolt Mounting for 1/2" Bolts
DB-040DQ1	XE-10373	2.38" Eye with 4-Bolt Mounting for 5/8" Bolts
DB-060FQ1	XE-1385	3" I.D. Eye with 4-Bolt Mounting for 3/4" Bolts
DB-100FQ1	XE-1385	3" I.D. Eye with 4-Bolt Mounting for 7/8" Bolts
DB-045BW1	Date Stamp Only	2.38" I.D. Eye Drawbar with Housing 3" x 4" x 6"
DB-610-30	XW-1249-48	3" I.D. Eye Drawbar with Housing 3" x 4" x 6"
DB-1228-1	XE-1228	2.5" I.D. Eye with 6-Bolt Mounting 1.25" x 3" Shank
DB-1235-1	XE-1235	3" I.D. Eye with 6-Bolt Mounting 3.12" x 3.12" Shank
DB-1235-3	XW-1235	3.0" I.D. Eye with 6-Bolt Mounting 3.12" x 3.0" Shank
DB-1238	XE-1230	3" I.D. Eye with 6-Bolt Mounting 1.62" x 3" Shank
DB-1245-1	XE-1245	2.38" I.D. Eye with 6-Bolt Mounting 3.12" x 3.12" Shank
DB-1249-2H	XE-1249-2H-10	3" I.D. Eye with 2" O.D. x 4.25" Shank
DB-1249-49	XE-1249-48	3" I.D. Eye with 2" O.D. x 8.5" Shank
DB-1250-3	Date Stamp Only	2.5" I.D. Eye Drawbar with 1.5" Diameter x 3.25" Shank
DB-1307-S-1	XE-1249	3" I.D. Eye Drawbar with Housing 5" O.D. x 8.25"
DB-1400	DB-1400	2.38" I.D. Eye Weld-on Drawbar
DB-1400AC-1	DB-1400AC	2.38" I.D. Eye Weld-on Drawbar with Snubber on 12" Rod
DB-1400AC-2	DB-1400AC	2.38" I.D. Eye Weld-on Drawbar with Snubber on 8" Rod
DB-1400AC-3	DB-1400AC	2.38" I.D. Eye Weld-on Drawbar with Snubber on 7" Rod
DB-1400AC-4	DB-1400AC	2.38" I.D. Eye Weld-on Drawbar with Snubber on 10" rod
DB-1407-S	Date Stamp Only	2.38" I.D. Eye Drawbar with Housing 5" O.D. x 8.25"
DB-1407-SE	Date Stamp Only	2.38" I.D. Eye Drawbar with Housing 5" O.D. x 9.63"
DB-1422	1422	2.38" I.D. Eye Drawbar for "A-Frame" Mounting

PINTLE HOOKS



- Combination Ball / Hook
- Rigid Mount
- Swivel Mount
- NoLube™
- Air Cushioned
- FastLatch™

Pintle Hooks – Rigid Mount

BH-200RN41 Features 2" diameter ball
BH-50mmRN41 Features 50mm diameter ball

Application

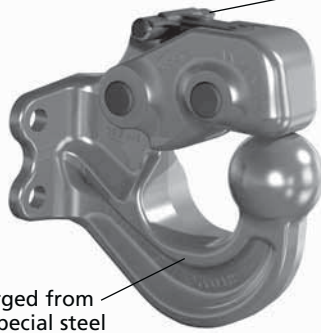
A rigid mount pintle hook that combines a pintle hook and ball hitch. Designed for customers who need the strength and capacity to pull trailers equipped with drawbars, as well as the flexibility to pull trailers with a 2" or 50mm ball hitch.



One-hand operation and automatic secondary lock
 Patent #7,431,321

Our unique design is:

- Stronger and more durable than removable ball designs.
- Shape eliminates premature wear typically caused by the drawbar pulling against the ball.
- Provides better oscillation and articulation in off-road conditions than a removable ball design.



Forged from a special steel alloy that is heat treated for strength, and durability.



Available with a tethered lock pin as BH-200RN51 or BH-50mmRN51

Weight: 10 lbs. (4.5 kg)



Capacities

Pintle Hook:

4,000 lbs. (1,810 kg) Maximum Vertical Load
 20,000 lbs. (9,070 kg) Maximum Gross Trailer Weight

2" Ball / 50mm Ball:

1,000 lbs. (454 kg) Maximum Vertical Load
 10,000 lbs. (4,540 kg) Maximum Gross Trailer Weight

Drawbar Eye Dimensions

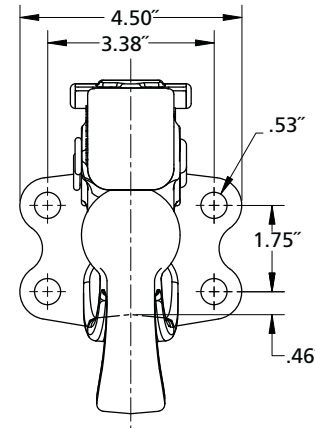
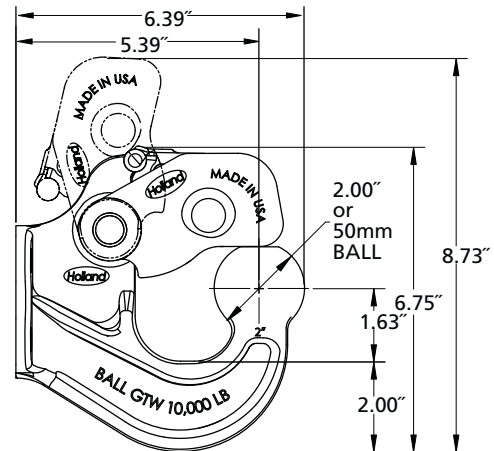
2.38" to 3" I.D. with 1.25" to 1.63" diameter section.

Additional Information

- For severe off-road applications, reduce the above maximum capacities by 25% and use with a swivel-mount drawbar.
- Tested in accordance with SAE J847.
- For additional specification detail, refer to document numbers:

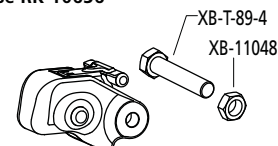
XL-PH377 for BH-200RN41
 XL-PH385 for BH-200RN51
 XL-PH379 for BH-50mmRN41
 XL-PH384 for BH-50mmRN51

Mounting Dimensions

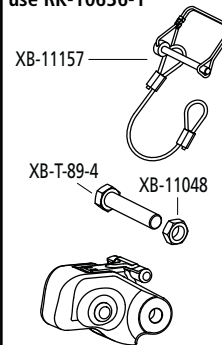


Replacement Parts

For BH-200RN41/50mmRN41
 use RK-10636



For BH-200RN51/50mmRN51
 use RK-10636-1

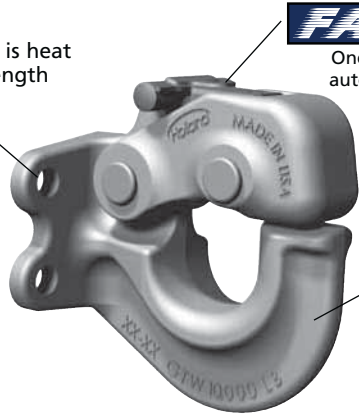


PH-10RP41

Application

A rigid mount pintle hook designed for over-the-road and off-road towing.

Cast steel body is heat treated for strength and durability.



FAST LATCH™

One-hand operation and automatic secondary lock
Patent #7,431,321

The hook is designed for maximum articulation and reduced wear.



Available with a tethered lock pin as PH-10RP51

Weight: 7.5 lbs. (3.4 kg)

Capacities

2,000 lbs. (910 kg) Maximum Vertical Load
10,000 lbs. (4,540 kg) Maximum Gross Trailer Weight

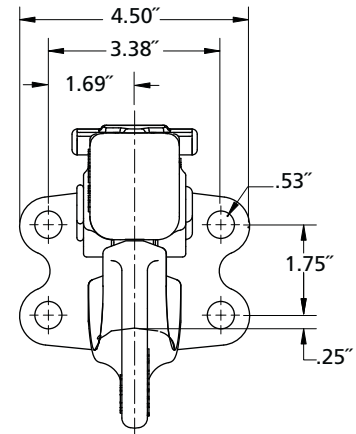
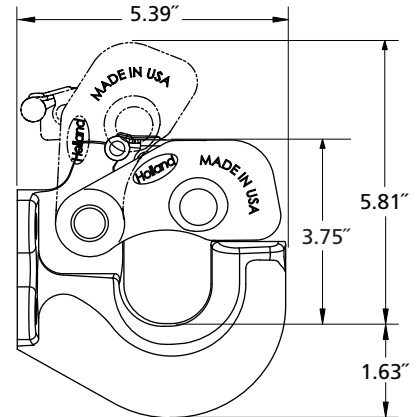
Drawbar Eye Dimensions

2" to 3" I.D. with 1.25" to 1.63" diameter section.

Additional Information

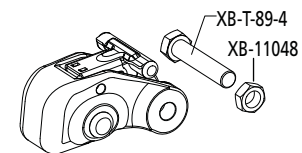
- For severe off-road applications, reduce the above maximum capacities by 25% and use with a swivel-mount drawbar.
- Tested in accordance with SAE J847.
- For additional specification detail, refer to document number XL-PH350. For PH-10RP51, refer to XL-PH387.

Mounting Dimensions

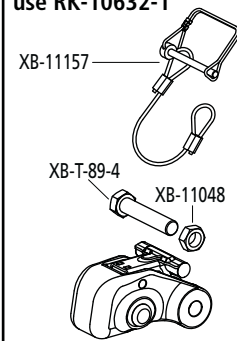


Replacement Parts

For PH-10RP41 use RK-10632



For PH-10RP51 use RK-10632-1



Pintle Hooks – Rigid Mount

PH-T-60-AOL-8 (with chained cotter pin)

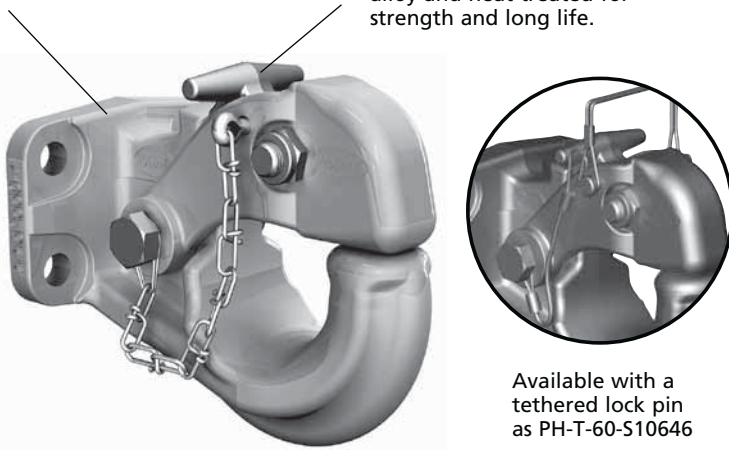
PH-T-60-S10646 (with tethered lock pin)

Application

A rigid mount pintle hook designed for over-the-road and off-road towing within stated capacities.

Forged from a special steel alloy that is heat treated for strength and durability.

The latch is forged steel alloy and heat treated for strength and long life.



Available with a tethered lock pin as PH-T-60-S10646

Weight: 11 lbs. (5 kg)

Capacities

6,000 lbs. (2,720 kg) Maximum Vertical Load

30,000 lbs. (13,610 kg) Maximum Gross Trailer Weight

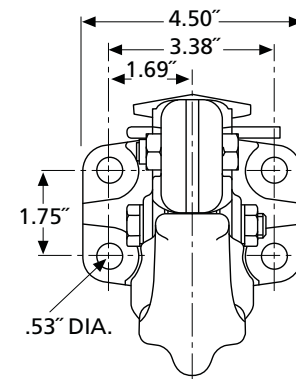
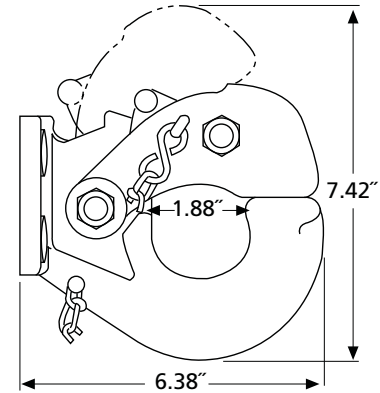
Drawbar Eye Dimensions

2" to 3" I.D. with 1.25" to 1.63" diameter section.

Additional Information

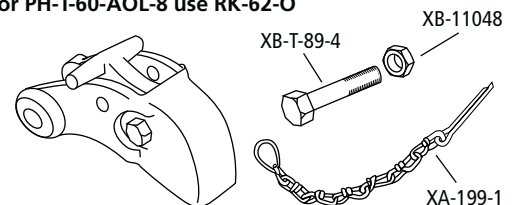
- For severe off-road applications, reduce the above maximum capacities by 25% and use with a swivel-mount drawbar.
- Tested in accordance with SAE J847.
- For additional specification detail, refer to document number XL-PH203, or XL-PH333 for PH-T-60-S10646.

Mounting Dimensions

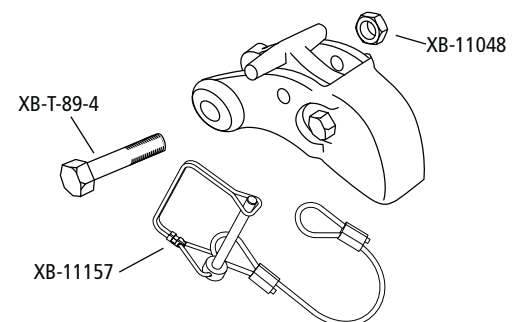


Replacement Parts

For PH-T-60-AOL-8 use RK-62-O



For PH-T-60-S10646 use RK-S10646



PH-30RP41

Application

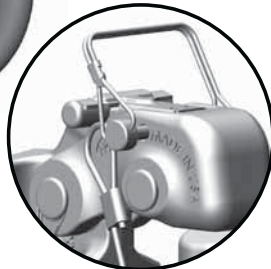
A versatile rigid mount pintle hook designed for over-the-road and off-road towing.



One-hand operation and automatic secondary lock
Patent #7,431,321



The hook is designed for maximum articulation and reduced wear.



Available with a tethered lock pin as PH-30RP51

Forged from a special steel alloy that is heat treated for strength and durability.

Weight: 8.4 lbs. (4.2 kg)

Capacities

6,000 lbs. (2,720 kg) Maximum Vertical Load
30,000 lbs. (13,610 kg) Maximum Gross Trailer Weight

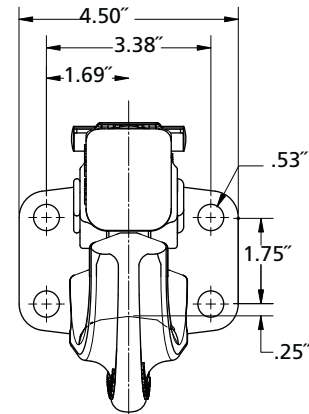
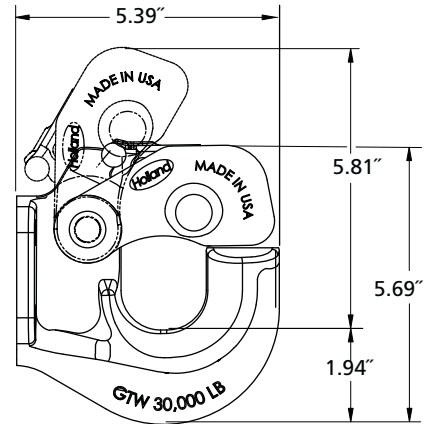
Drawbar Eye Dimensions

2.38" to 3" I.D. with 1.25" to 1.63" diameter section.

Additional Information

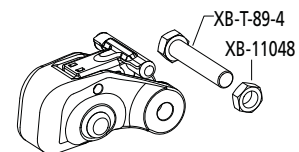
- For severe off-road applications, reduce the above maximum capacities by 25% and use with a swivel-mount drawbar.
- Tested in accordance with SAE J847.
- For additional specification detail, refer to document number XL-PH351. For PH-30RP51, refer to XL-PH364.

Mounting Dimensions

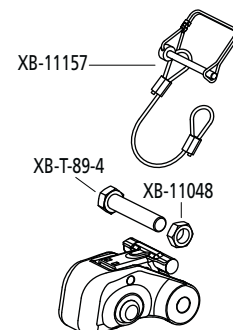


Replacement Parts

For PH30RP41 use RK-10632



For PH-30RP51 use RK-10632-1



Pintle Hooks – Swivel Mount (with Spring Shock Absorption)

PH-30SA41

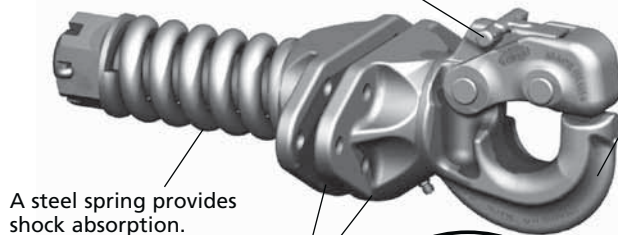
Application

A split flange mount, swivel style pintle hook designed for over-the-road and off-road applications. The spring provides shock absorption at the coupling—ideal for utility and construction applications.



One-hand operation and automatic secondary lock
Patent #7,431,321

Forged from a special steel alloy that is heat treated for strength and durability.



A steel spring provides shock absorption.

Cast ductile iron mounting flanges for 5/8" plate.



Available with a tethered lock pin as PH-30SA51.

Weight: 32 lbs. (14.5kg)

Capacities

6,000 lbs. (2,720 kg) Maximum Vertical Load
30,000 lbs. (13,610 kg) Maximum Gross Trailer Weight

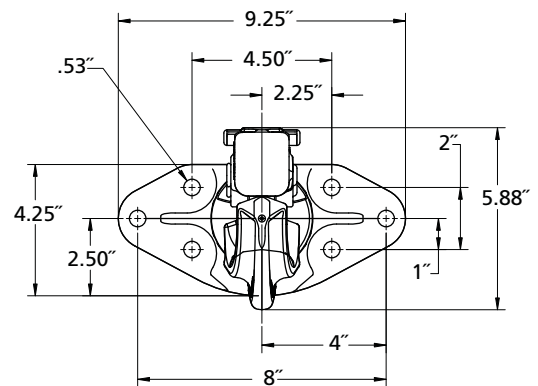
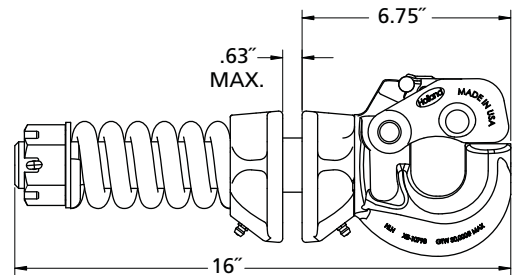
Drawbar Eye Dimensions

2.38" to 3" I.D. with 1.25" to 1.63" diameter section.

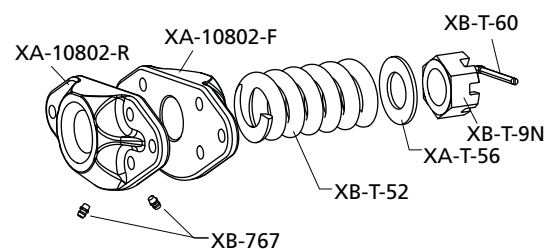
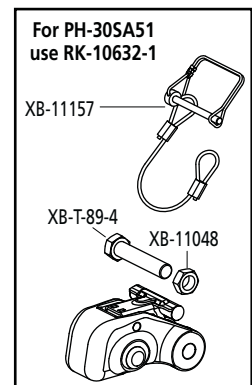
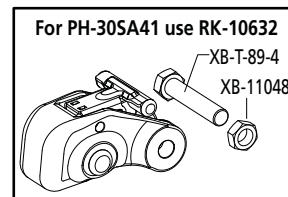
Additional Information

- For severe off-road applications, reduce the above maximum capacities by 25%. Not for use with a swivel-mount drawbar.
- Tested in accordance with SAE J847.
- For additional specification detail, refer to document number XL-PH368. For PH-30SA51, refer to XL-PH369.

Mounting Dimensions



Replacement Parts





Pintle Hooks – Swivel Mount (with Spring Shock Absorption)

SAF-HOLLAND Group

PH-30SB41

Application

An under-mount, swivel style pintle hook designed for over-the-road and off-road applications. The spring provides shock absorption at the coupling—ideal for utility and construction applications.



One-hand operation and automatic secondary lock
Patent #7,431,321

The fully machined, high-strength, cast ductile iron housing with a zerk fitting for easy lubrication.

Steel spring provides shock absorption.

Integrated mount for cross-bracing.

Available with a tethered lock pin as PH-30SB51

Weight: 38 lbs. (17.2 kg)

Capacities

6,000 lbs. (2,720 kg) Maximum Vertical Load
30,000 lbs. (13,610 kg) Maximum Gross Trailer Weight

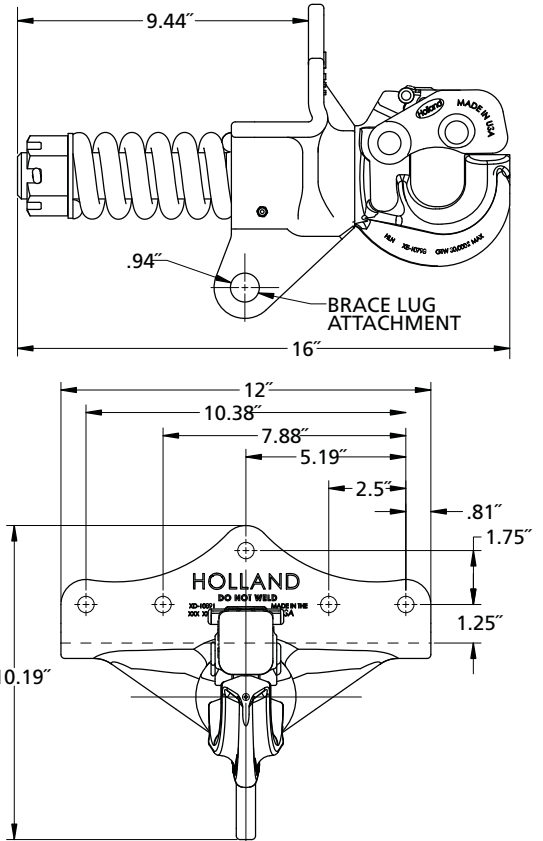
Drawbar Eye Dimensions

2.38" to 3" I.D. with 1.25" to 1.63" diameter section.

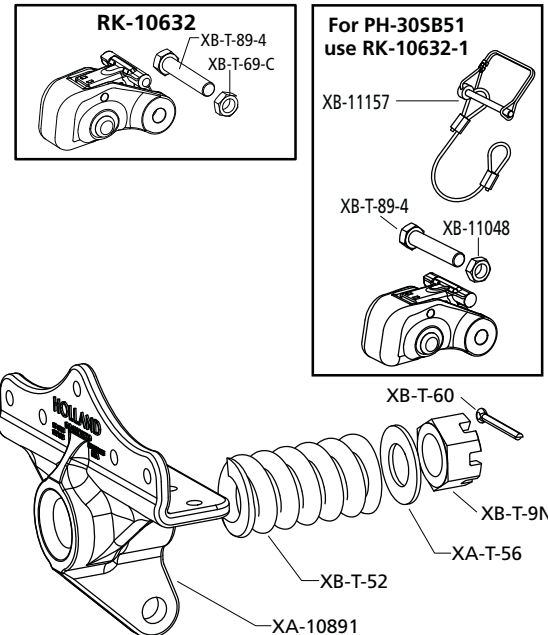
Additional Information

- For severe off-road applications, reduce the above maximum capacities by 25%. Not for use with a swivel-mount drawbar.
- Tested in accordance with SAE J847.
- For additional specification detail, refer to document number XL-PH365. For PH-30SB51, refer to XL-PH371.

Mounting Dimensions



Replacement Parts



Pintle Hooks – Swivel Mount

PH-T-60-AOS-L-8

Application

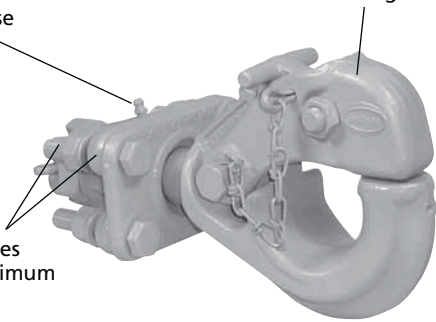
A split flange mounted, swivel style pintle hook designed for over-the-road and off-road applications.

The body is forged from special alloy steel that is heat treated for strength and durability. The special pintle shape is designed for maximum articulation and reduced wear.

The rear flange includes a grease fitting for easy lubrication.

Latch is forged steel alloy and heat treated for strength and long life.

Mounting flanges allow for a maximum .69" plate.



Weight: 15 lbs. (6.8 kg)

Capacities

3,600 lbs. (1,630 kg) Maximum Vertical Load
18,000 lbs. (8,160 kg) Maximum Gross Trailer Weight

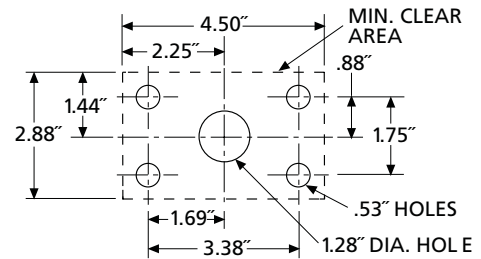
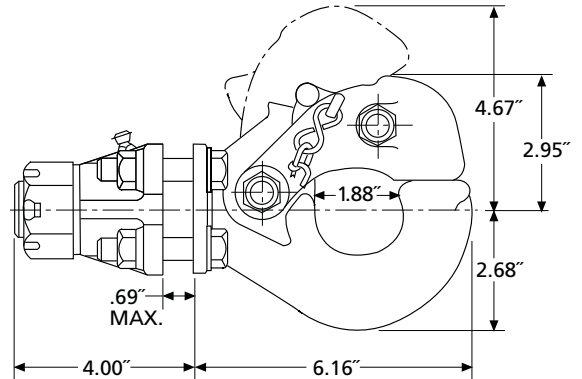
Drawbar Eye Dimensions

2" to 3" I.D. with 1.25" to 1.63" diameter section.

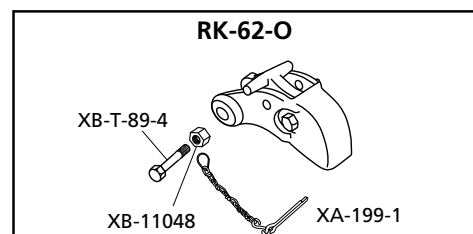
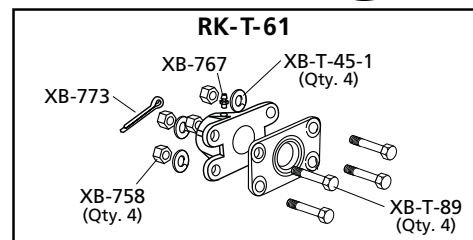
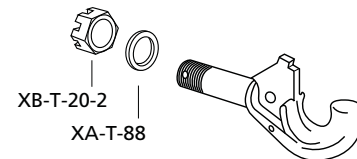
Additional Information

- For severe off-road applications, reduce the above maximum capacities by 25%. Not for use with a swivel-mount drawbar.
- Tested in accordance with SAE J847.
- For additional specification detail, refer to document number XL-PH208.

Mounting Dimensions



Replacement Parts



PH-760

Application

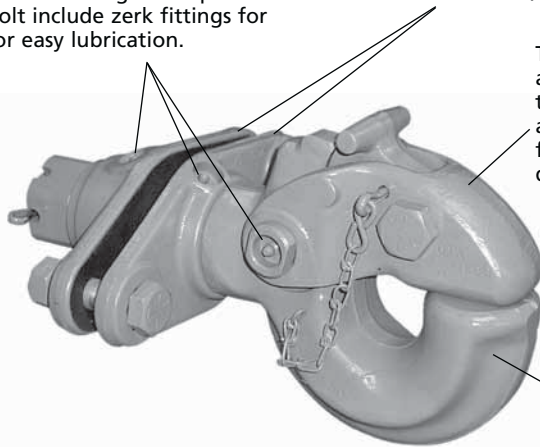
Heavy-duty construction for on- and off-road applications where a significant amount of articulation is required in a swivel-style split flange mount pintle hook.

To ensure long life, the front and rear flanges and pivot bolt include zerk fittings for easy lubrication.

Mounting flanges allow for a maximum 3/4" plate.

The forged steel alloy body and the cast steel latch are heat treated for strength and durability.

The hook is designed for maximum articulation.



Weight: 36 lbs. (16.3 kg)

Capacities

9,800 lbs. (4,440 kg) Maximum Vertical Load
 49,000 lbs. (22,230 kg) Maximum Gross Trailer Weight

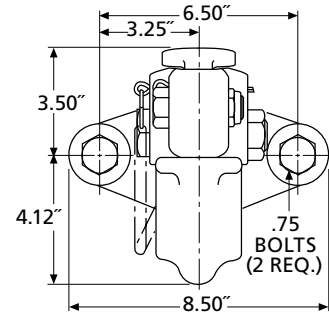
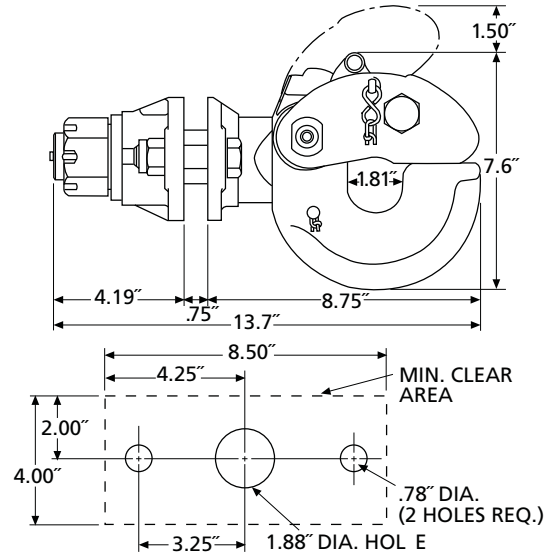
Drawbar Eye Dimensions

3" I.D. with 1.25" to 1.63" diameter section.

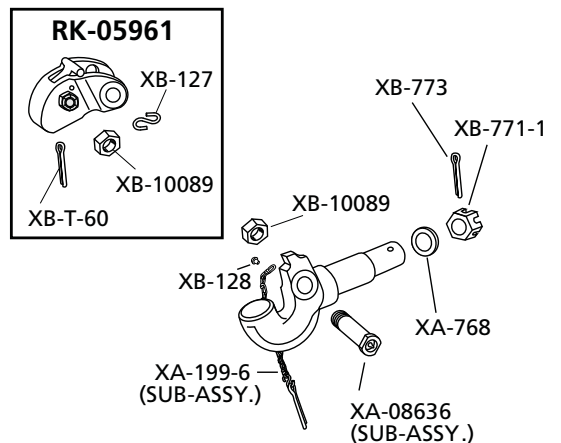
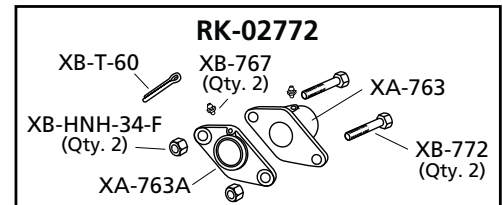
Additional Information

- For severe off-road applications, reduce the above maximum capacities by 25%. Not for use with a swivel-mount drawbar.
- Tested in accordance with SAE J847.
- For additional specification detail, refer to document number XL-PH215.

Mounting Dimensions



Replacement Parts

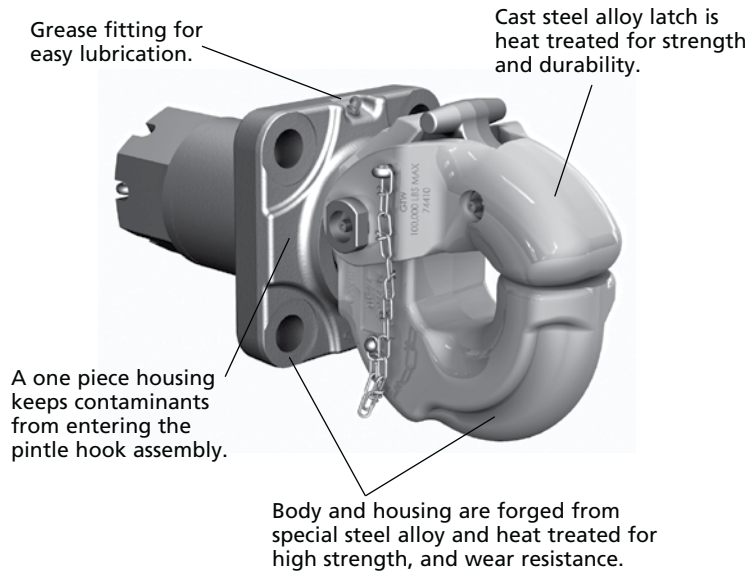


Pintle Hooks – Swivel Mount

PH-775-01552 (Lubricated)

Application

Heavy-duty construction for on- and off-road applications where a significant amount of articulation is required.



Weight: 60 lbs. (27.2 kg)

Capacities

20,000 lbs. (9,070 kg) Maximum Vertical Load
 100,000 lbs. (45,360 kg) Maximum Gross Trailer Weight

Drawbar Eye Dimensions

3" I.D. with 1.63" diameter section.

Additional Information

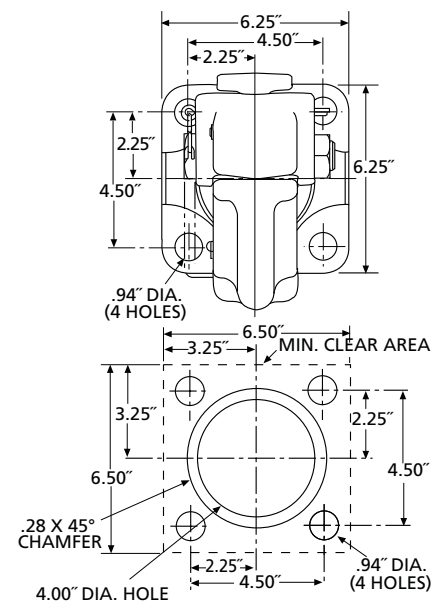
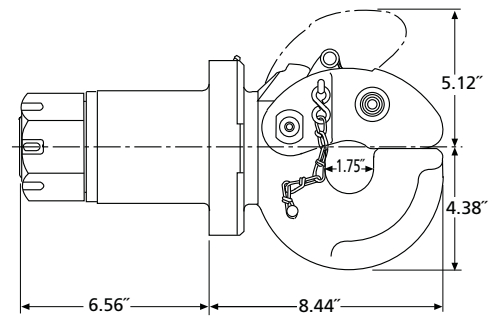
- For severe off-road applications, reduce the above maximum capacities by 25%. Not for use with a swivel-mount drawbar.
- Tested in accordance with SAE J847.
- For additional specification detail, refer to document number XL-PH246.

The Holland PH-775-01552 complies with NOM-035-SCT-2-2010 Safety Specifications and Test Methods.

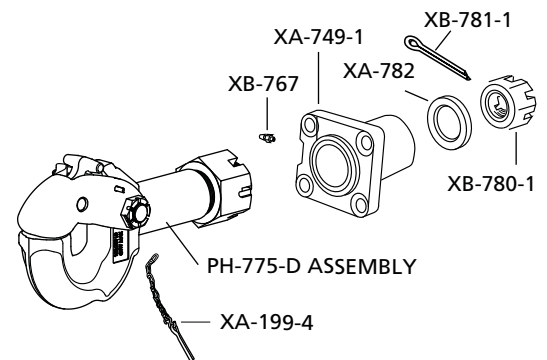
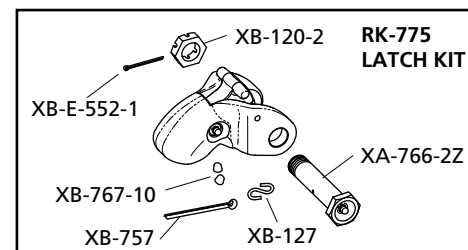
**Interchangeable with
 New PH-995SH71,
 see page 33.**



Mounting Dimensions



Replacement Parts





SAF-HOLLAND Group

PH-775SL11 (NoLube®)

Application

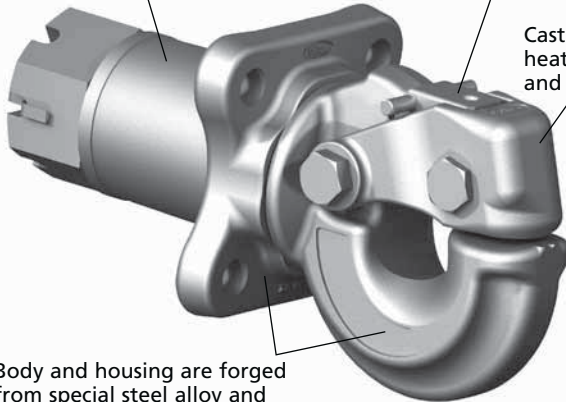
Heavy-duty construction for on- and off-road applications where a significant amount of articulation is required.

A one-piece sealed housing keeps contaminants from entering the pintle hook assembly.

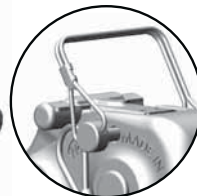


One-hand operation and automatic secondary lock
Patent #7,431,321

Cast steel alloy latch is heat treated for strength and durability.



Body and housing are forged from special steel alloy and heat treated for high strength and wear resistance.



Available with a tethered lock pin as PH-775SL21.



No lubrication required.

Weight: 57 lbs. (25.8 kg)

Capacities

20,000 lbs. (9,070 kg) Maximum Vertical Load
100,000 lbs. (45,360 kg) Maximum Gross Trailer Weight

Drawbar Eye Dimensions

3" I.D. with a 1.63" diameter section.

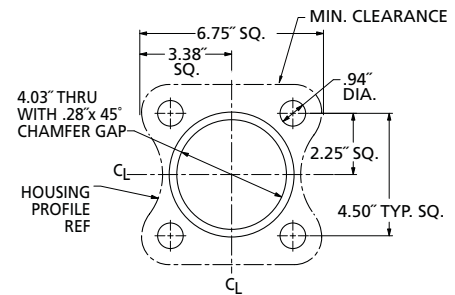
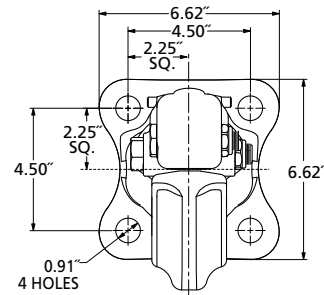
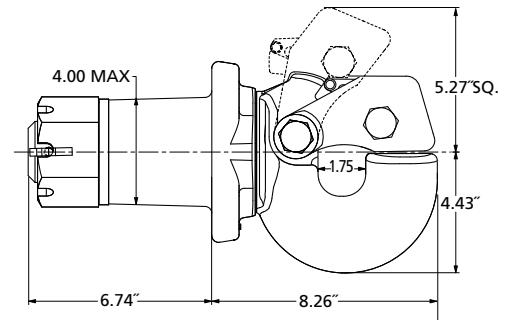
Additional Information

- For severe off-road applications, reduce the above maximum capacities by 25%. Not for use with a swivel-mount drawbar.
- Tested in accordance with SAE J847.
- For additional specification detail, refer to document number XL-PH334. For PH-775SL21, refer to XL-PH339.

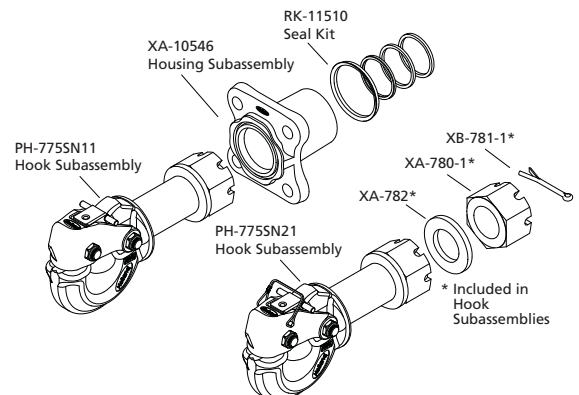
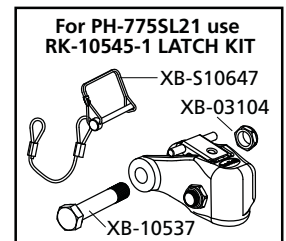
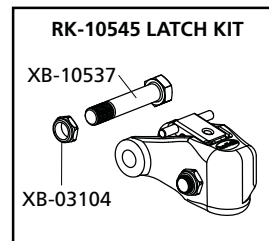
The Holland PH-775SL NoLube complies with NOM-0350-SCT-2-2010 Safety Specifications and Test Methods.

Pintle Hooks – Swivel Mount

Mounting Dimensions



Replacement Parts



Pintle Hooks – Rigid Mount – Air Cushioned

PH-300 and PH-300-R

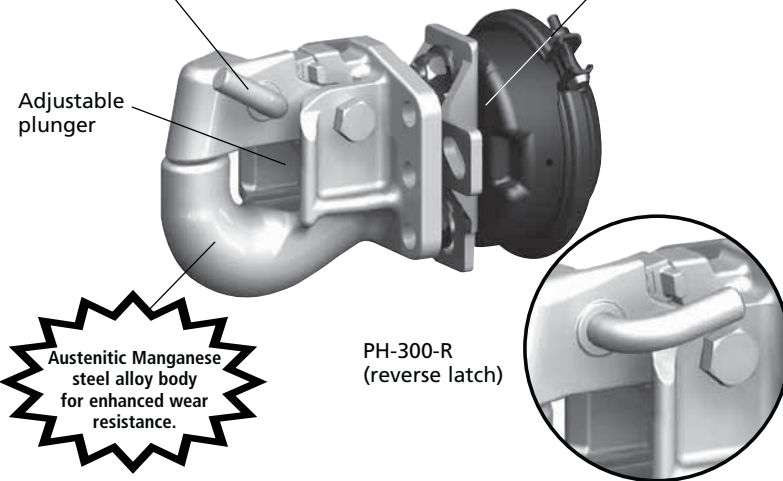
Application

A rigid mount pintle hook designed for enhanced wear resistance. Used for on- and off-road applications.

Unique one-handed latch operation. Also available with reversed latch handle, PH-300-R (see inset).

Plunger/snubber force is developed by the vehicle's air system to reduce wear and to provide shock absorption.

Adjustable plunger



Weight: 42 lbs. (19 kg)

The complete assembly includes a pintle hook, plunger, air chamber, and mounting bracket. For pintle hooks without an air chamber, bracket, or plunger, order PH-300-1 or PH-300-R-1.

The PH-300 can be operated with or without the air chamber. For easier coupling, drawbar guides are available, see page 56.

Capacities

18,000 lbs. (8,160 kg) Maximum Vertical Load
72,000 lbs. (32,660 kg) Maximum Gross Trailer Weight

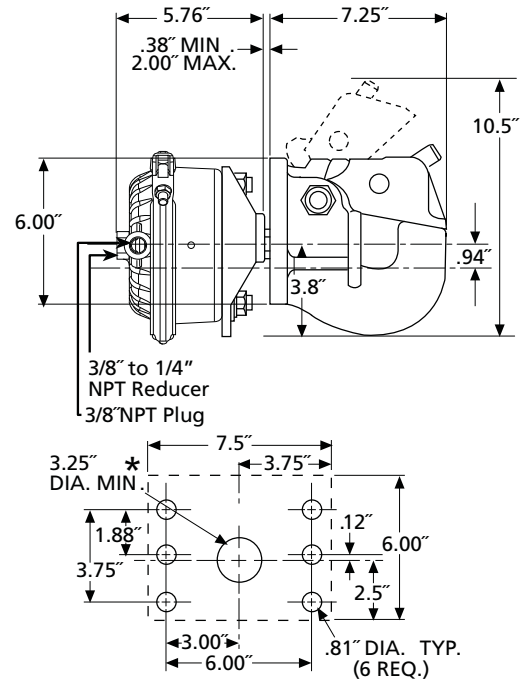
Drawbar Eye Dimensions

2.38" to 3" I.D. with 1.25" to 1.63" diameter section.

Additional Information

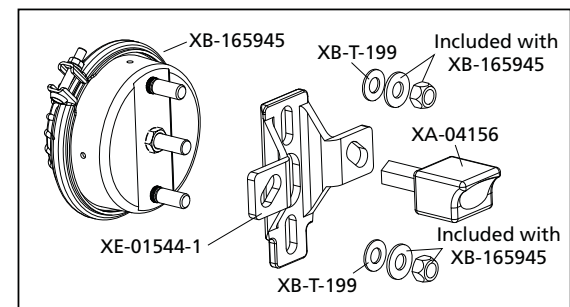
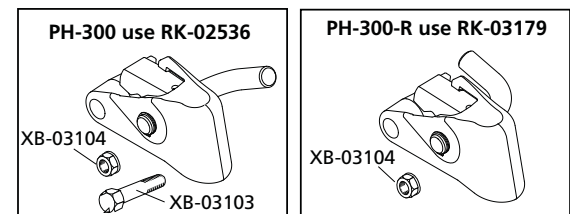
- For severe off-road applications, reduce the above maximum capacities by 25% and use with a swivel-mount drawbar.
- Tested in accordance with SAE J847 (Type II).
- For additional specification detail, refer to document number XL-PH243. For PH-300-R, refer to XL-PH248.

Mounting Dimensions



* Center hole not required if used without air chamber.

Replacement Parts



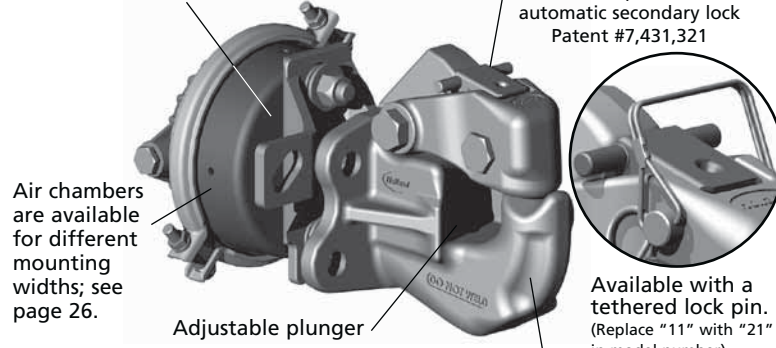
XA-02608 Cylinder and Bracket Sub-Assembly

PH-210

Application

A rigid mount pintle hook designed for trailers and semitrailers in doubles and triples operations. Used for off- and over-the-road applications. Air cushioned snubber is designed to minimize the gap between the pintle hook and the drawbar on vehicles with air systems.

Plunger/snubber force is developed by the vehicle's air system to reduce wear and to provide shock absorption.



FAST LATCH™

One-hand operation and automatic secondary lock Patent #7,431,321

Available with a tethered lock pin. (Replace "11" with "21" in model number)

Cast steel alloy body is heat treated for increased strength and durability.

Weight: 38 lbs. (17.2 kg)

PH-210RA11 – Complete assembly includes a pintle hook, plunger, air chamber, and mounting bracket.

PH-210RN11 – Pintle hook without an air chamber, bracket or plunger.

PH-210RM11 – Pintle hook with plunger only.

For additional model numbers, see page 26.

The PH-210 can be operated with or without the air chamber.

For easier coupling, drawbar guides are available, see page 56.

Capacities

- 18,000 lbs. Maximum Vertical Load
- 90,000 lbs. Maximum Gross Trailer Weight

Drawbar Eye Dimensions

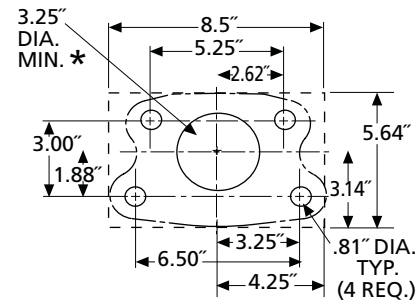
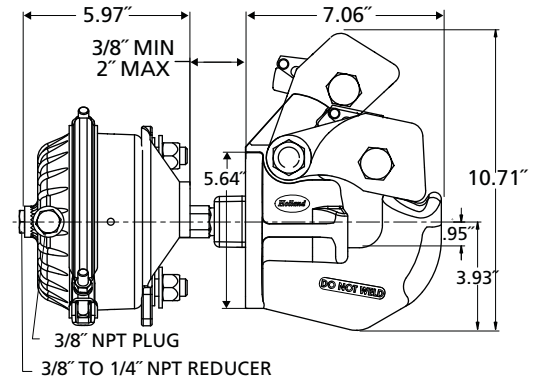
2.38" to 3" I.D. with 1.25" to 1.63" diameter section.

Additional Information

- For severe off-road applications, reduce the above maximum capacities by 25% and use with a swivel-mount drawbar.
- Tested in accordance with SAE J847.
- For additional specification detail, refer to document number XL-PH340.
- Also available – PH210 Series with tethered lock pin. Replace "11" with "21" in model number.

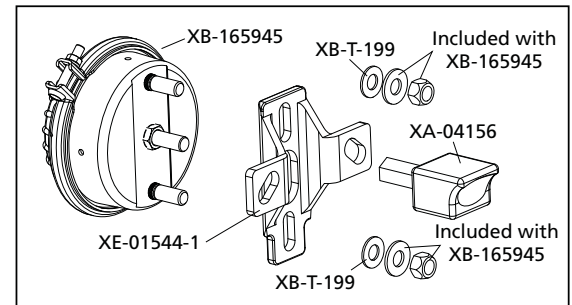
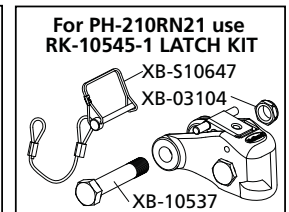
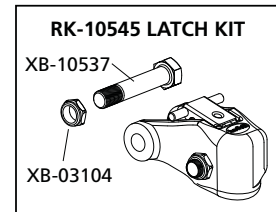
The Holland PH-210 complies with NOM-0350-SCT-2-2010 Safety Specifications and Test Methods.

Mounting Dimensions



* Center hole not required if used without air chamber.

Replacement Parts



XA-02608 Cylinder and Bracket Sub-Assembly

Pintle Hooks – Rigid Mount – Air Cushioned

PH-310

Application

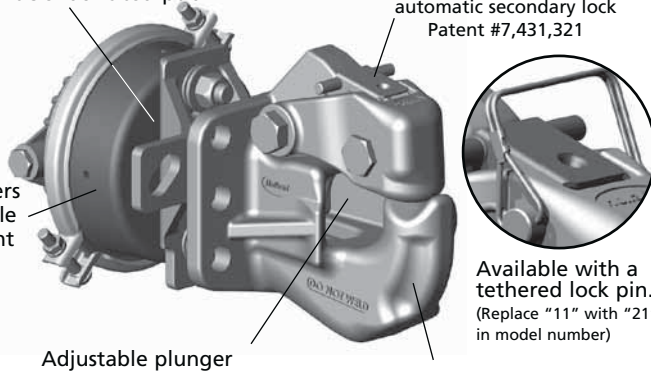
A rigid mount pintle hook designed for trailers and semitrailers in doubles and triples operations. Used for off- and over-the-road applications. Air cushioned snubber is designed to minimize the space between the pintle hook and the drawbar on vehicles with air systems.

Plunger/snubber force is developed by the vehicle's air system to reduce wear and to provide shock absorption.

FAST LATCH™

One-hand operation and automatic secondary lock
Patent #7,431,321

Air chambers are available for different mounting widths; see page 26.



Weight: 39 lbs. (17.7 kg)

PH-310RA11 – Complete assembly includes a pintle hook, plunger, air chamber, and mounting bracket.

PH-310RN11 – Pintle hook without an air chamber, bracket or plunger.

PH-310RM11 – Pintle hook with plunger only.

For additional model numbers, see page 26.

The PH-310 can be operated with or without the air chamber.

For easier coupling, drawbar guides are available, see page 56.

Capacities

20,000 lbs. (9,070 kg) Maximum Vertical Load

100,000 lbs. (45,360 kg) Maximum Gross Trailer Weight

Drawbar Eye Dimensions

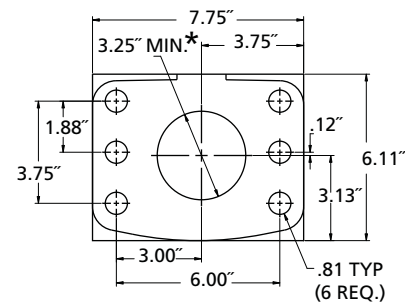
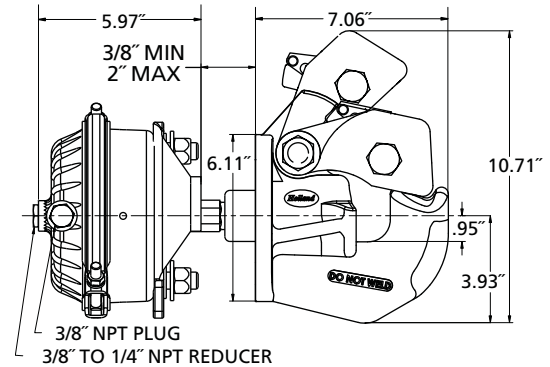
2.38" to 3" I.D. with 1.25" to 1.63" diameter section.

Additional Information

- For severe off-road applications, reduce the above maximum capacities by 25% and use with a swivel-mount drawbar.
- Tested in accordance with SAE J847.
- For additional specification detail, refer to document number XL-PH341.
- Also available – PH310 Series with tethered lock pin. Replace "11" with "21" in model number.

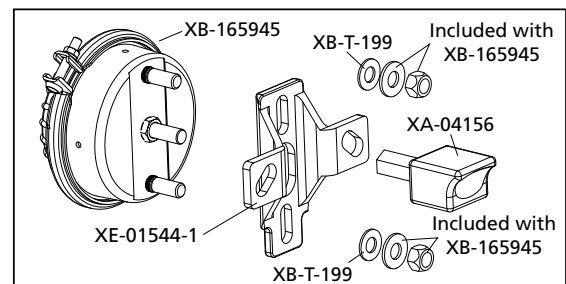
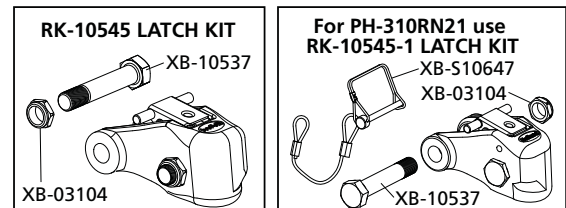
The Holland PH-310 complies with NOM-0350-SCT-2-2010 Safety Specifications and Test Methods.

Mounting Dimensions



* Center hole not required if used without air chamber.

Replacement Parts



XA-02608 Cylinder and Bracket Sub-Assembly

PH-400 and PH-400-H

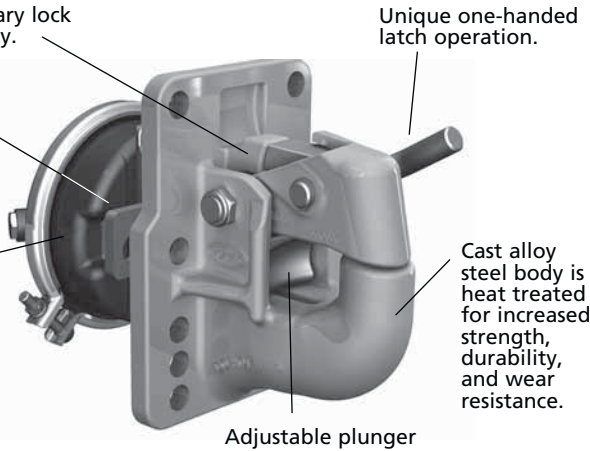
Application

A rigid mount pintle hook designed for trailers and semitrailers in doubles and triples operations. Used for off- and over-the-road applications. Air cushioned snubber is designed to minimize the gap between the pintle hook and the drawbar on vehicles with air systems.

Automatic secondary lock for improved safety.

Plunger/snubber force is developed by the vehicle's air system to reduce wear and to provide shock absorption.

Air chambers are available for different mounting widths; see page 26.



Weight: 48 lbs. (21.8 kg)

The complete assembly includes a pintle hook, plunger, air chamber, and mounting bracket. For pintle hooks without an air chamber, bracket, or plunger, order PH-400-1 or PH-400-1-H.

The PH-400 and PH-400-H can be operated with or without the air chamber. For easier coupling, drawbar guides are available, see page 56.

Capacities

20,000 lbs. (9,070 kg) Maximum Vertical Load
100,000 lbs. (45,360 kg) Maximum Gross Trailer Weight

Drawbar Eye Dimensions

2.38" to 3" I.D. with 1.25" to 1.63" diameter section.

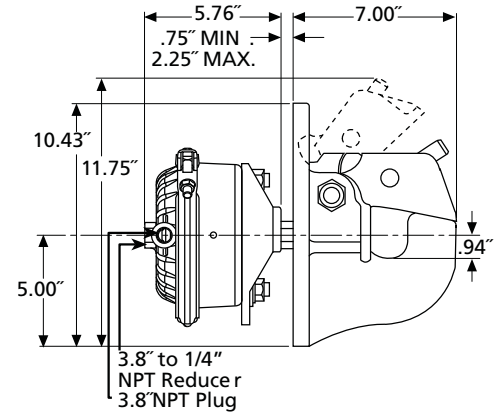
Additional Information

- For severe off-road applications, reduce the above maximum capacities by 25% and use with a swivel-mount drawbar.
- Tested in accordance with SAE J847.
- For additional specification detail, refer to document number XL-PH244 or PH-247.

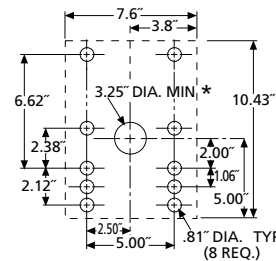
The Holland PH-400 and PH-400-H complies with NOM-0350-SCT-2-2010 Safety Specifications and Test Methods.

Mounting Dimensions

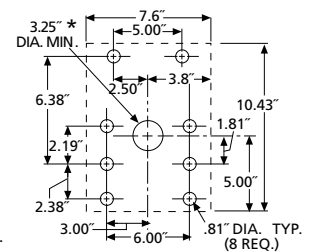
PH-400 and PH-400-H



PH-400

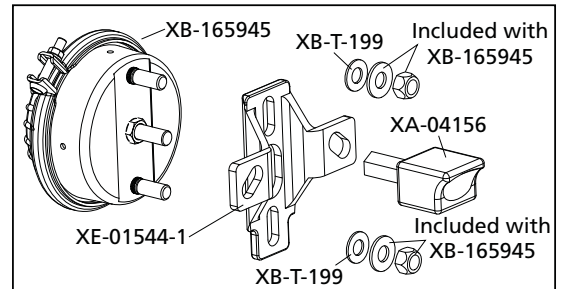
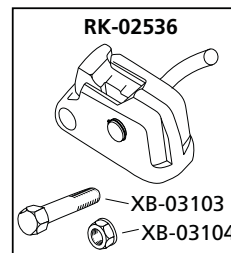


PH-400-H



* Center hole not required if used without air chamber.

Replacement Parts



XA-02608 Cylinder and Bracket Sub-Assembly

Pintle Hooks – Rigid Mount – Air Cushioned

PH-410

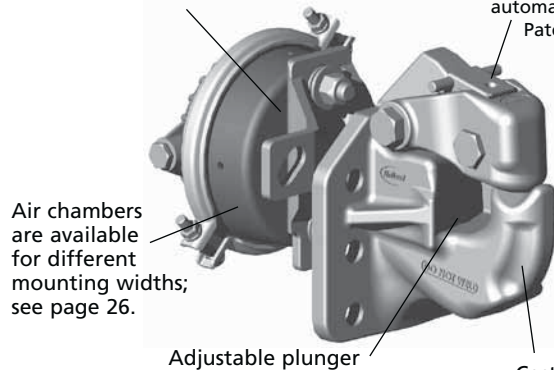
Application

A rigid mount pintle hook designed for trailers and semitrailers in doubles and triples operations. Used for off- and over-the-road applications. Air cushioned snubber is designed to minimize the gap between the pintle hook and the drawbar on vehicles with air systems.

Plunger/snubber force is developed by the vehicle's air system to reduce wear and to provide shock absorption.



One-hand operation and automatic secondary lock
Patent #7,431,321



Air chambers are available for different mounting widths; see page 26.

Adjustable plunger



Available with a tethered lock pin.
(Replace "11" with "21" in model number)

Cast steel alloy body is heat treated for increased strength, durability, and wear resistance.

Weight: 42 lbs. (19 kg)

PH-410RA11 – Complete assembly includes a pintle hook, plunger, air chamber, and mounting bracket.

PH-410RN11 – Pintle hook without an air chamber, bracket or plunger.

PH-410RM11 – Pintle hook with plunger only.

For additional model numbers, see page 26.

The PH-410 can be operated with or without the air chamber.

For easier coupling, drawbar guides are available, see page 56.

Capacities

20,000 lbs. (9,070 kg) Maximum Vertical Load

100,000 lbs. (45,360 kg) Maximum Gross Trailer Weight

Drawbar Eye Dimensions

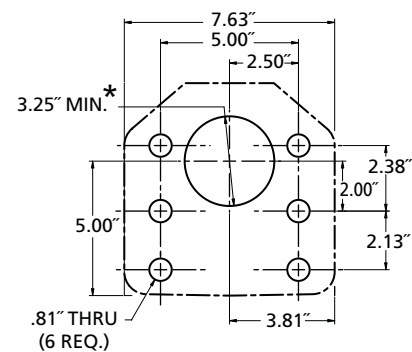
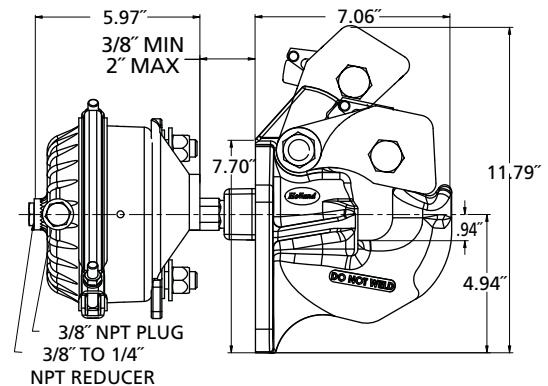
2.38" to 3" I.D. with 1.25" to 1.63" diameter section.

Additional Information

- For severe off-road applications, reduce the above maximum capacities by 25% and use with a swivel-mount drawbar.
- Tested in accordance with SAE J847.
- For additional specification detail, refer to document number XL-PH342.
- Also available – PH410 Series with tethered lock pin. Replace "11" with "21" in model number.

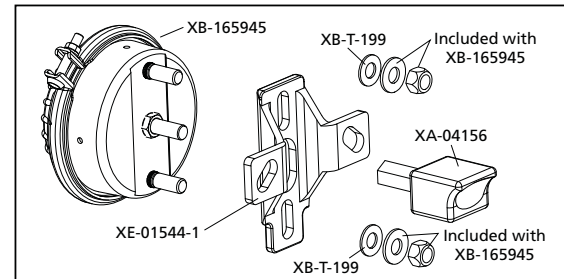
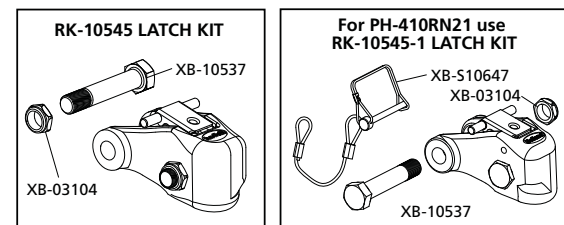
The Holland PH-410 complies with NOM-0350-SCT-2-2010 Safety Specifications and Test Methods.

Mounting Dimensions



* Center hole not required if used without air chamber.

Replacement Parts



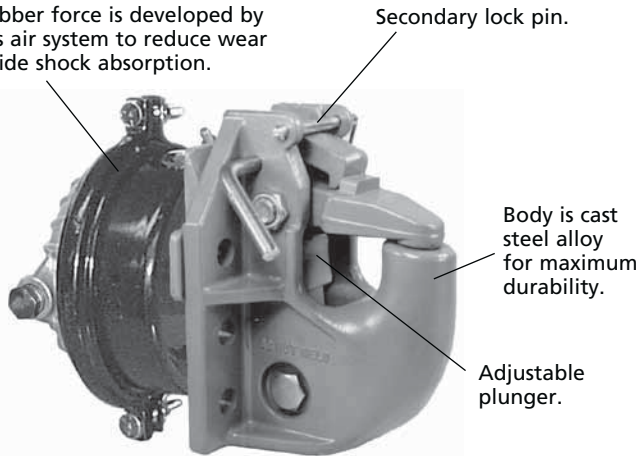
XA-02608 Cylinder and Bracket Sub-Assembly

PH-550

Application

A rigid mount pintle hook designed for trailers and semitrailers in doubles and triples operations. Used for off- and over-the-road applications. Air cushioned snubber is designed to minimize the gap between the pintle hook and the drawbar on vehicles with air systems.

Plunger/snubber force is developed by the vehicle's air system to reduce wear and to provide shock absorption.



Weight: 47 lbs. (21.3 kg)

The complete assembly includes a pintle hook, bullet, mounting bracket, and air chamber. For pintle hook and plunger only, order PH-550-1. The PH-550 must be operated with an air chamber. For easier coupling, drawbar guides are available; see page 56.

Capacities

25,000 lbs. (11,340 kg) Maximum Vertical Load
 100,000 lbs. (45,360 kg) Maximum Gross Trailer Weight

Drawbar Eye Dimensions

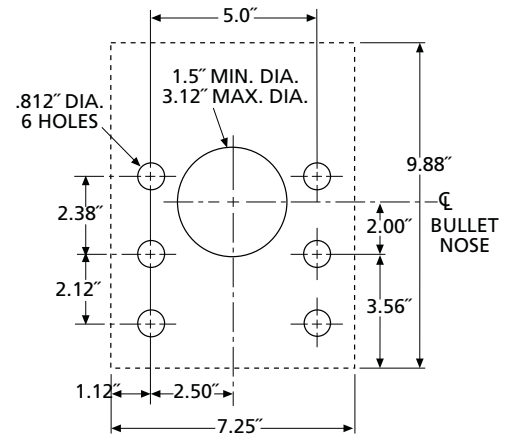
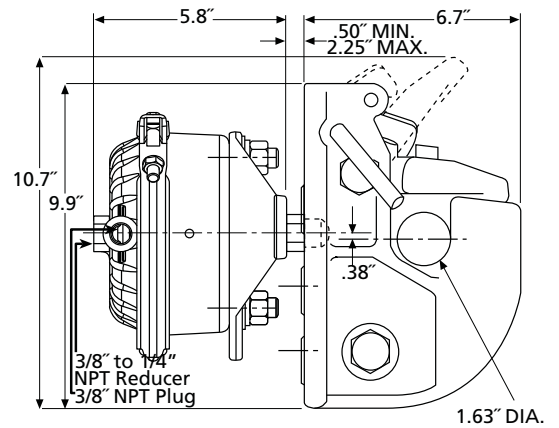
2.38" to 3" I.D. with 1.63" to 1.75" diameter section.

Additional Information

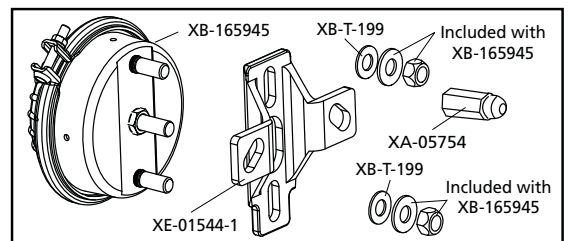
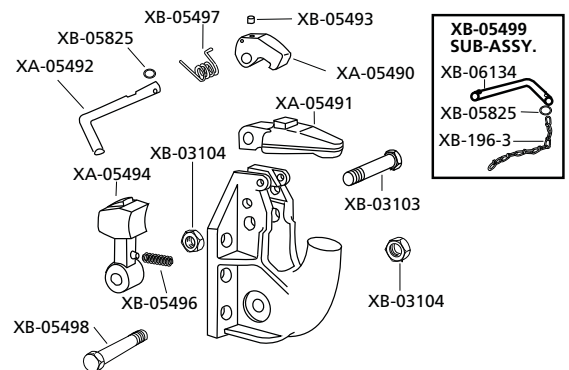
- For severe off-road applications, reduce the above maximum capacities by 25% and use with a swivel-mount drawbar.
- Tested in accordance with SAE J847.
- For additional specification detail, refer to document number XL-PH261.

The Holland PH-550 complies with NOM-0350-SCT-2-2010 Safety Specifications and Test Methods.

Mounting Dimensions



Replacement Parts



XA-09862 Cylinder and Bracket Sub-Assembly

Pintle Hooks – Rigid Mount – Air Cushioned

PH-419

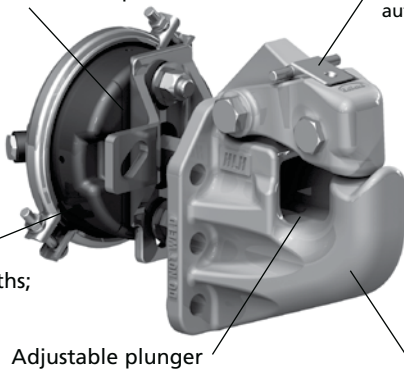
Application

A rigid mount pintle hook designed for trailers and semitrailers used in doubles and triples operations. Used for off- and over-the-road applications. Air cushioned snubber is designed to minimize the gap between the pintle hook and the drawbar on vehicles with air systems.

Plunger/snubber force is developed by the vehicle's air system to reduce wear and to provide shock absorption.

One-hand operation and automatic secondary lock
Patent #7,431,321

Air chambers are available for different mounting widths; see page 26.



Adjustable plunger



Available with a tethered lock pin.
(Replace "11" with "21" in model number)

Austenitic Manganese steel alloy body for enhanced wear resistance.

Weight: 42 lbs. (19 kg)

PH-419RA11 – Complete assembly includes a pintle hook, plunger, air chamber, and mounting bracket.

PH-419RN11 – Pintle hook without an air chamber, bracket or plunger.

PH-419RM11 – Pintle hook with plunger only.

For additional model numbers, see page 26.

The PH-419 can be operated with or without the air chamber.

For easier coupling, drawbar guides are available, see page 56.

Capacities

20,000 lbs. (9,070 kg) Maximum Vertical Load

100,000 lbs. (45,360 kg) Maximum Gross Trailer Weight

Drawbar Eye Dimensions

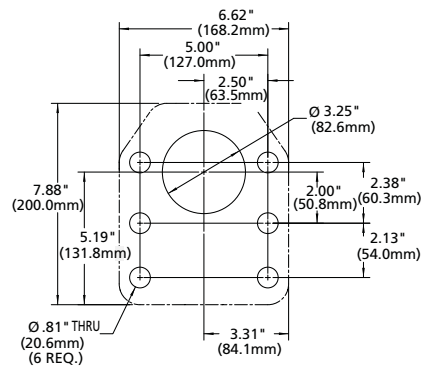
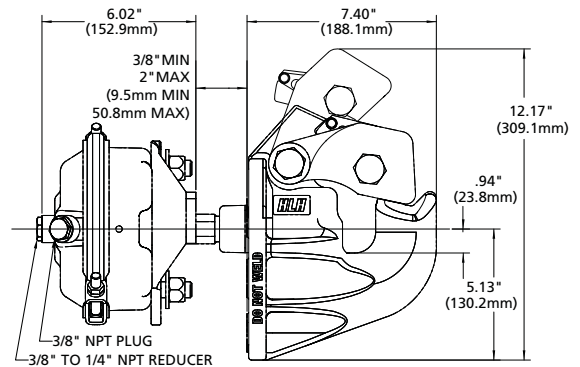
3" I.D. with 1.25" to 1.63" diameter section.

Additional Information

- For severe off-road applications, reduce the above maximum capacities by 25% and use with a swivel-mount drawbar.
- Tested in accordance with SAE J847.
- For additional specification detail, refer to document number XL-PH10409.
- Also available – PH419 Series with tethered lock pin. Replace "11" with "21" in model number.

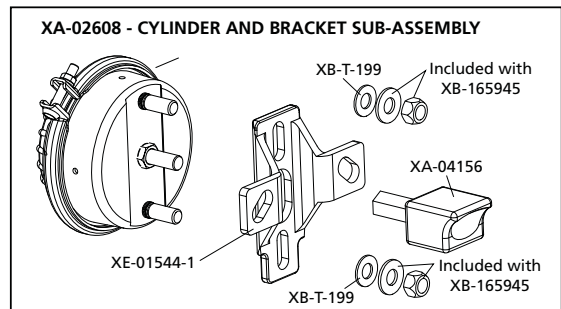
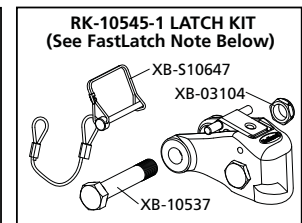
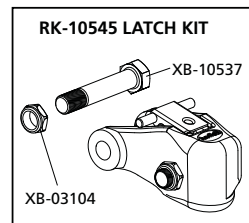
The Holland PH-419 complies with NOM-0350-SCT-2-2010 Safety Specifications and Test Methods.

Mounting Dimensions



* Center hole not required if used without air chamber.

Replacement Parts



XA-02608 Cylinder and Bracket Sub-Assembly

NEW PH-419 – BEST COMBINATION OF WEAR RESISTANCE, STRENGTH AND SAFETY

Enhanced Wear Resistance

- Austenitic manganese steel alloy body
- The hook ‘work hardens’ at contact surfaces with the drawbar eye

Strength by Design

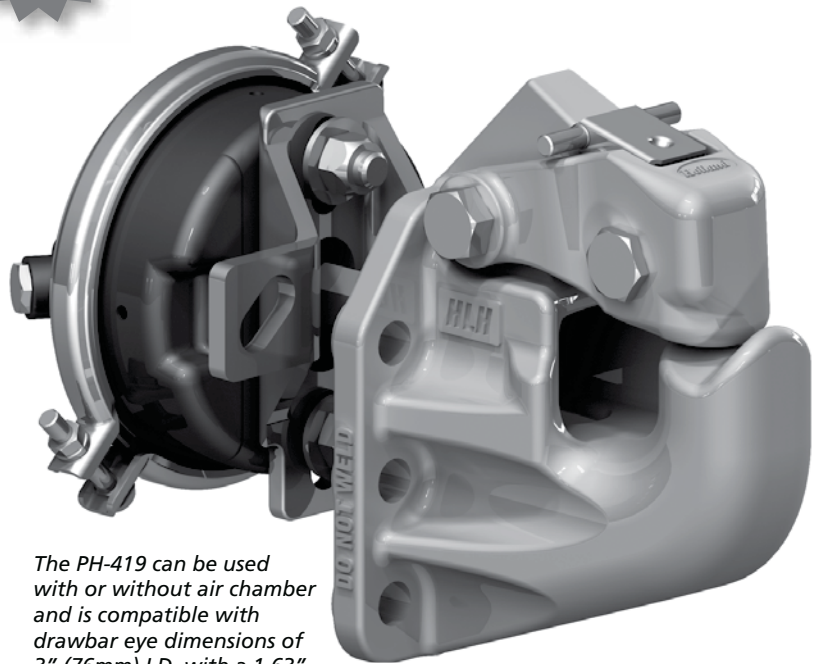
- Body designed to optimize strength based on the non-linear material properties of the austenitic manganese steel alloy
- Compared to a PH-410, which features our higher-strength carbon steel alloy, the PH-419 body is visibly more robust having been optimized via CAD / FEA for the austenitic manganese material properties

Safety by HOLLAND

- Our high standards of safety are the result of over a century of experience in the design, testing, manufacturing, and quality control of coupling products



PH-419 PINTLE HOOK



The PH-419 can be used with or without air chamber and is compatible with drawbar eye dimensions of 3" (76mm) I.D. with a 1.63" (41.5mm) cross section.



CAPACITIES

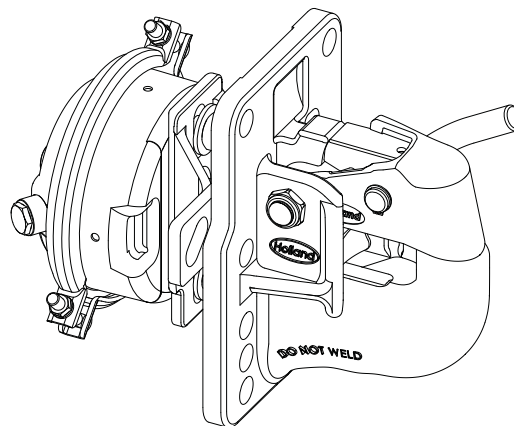
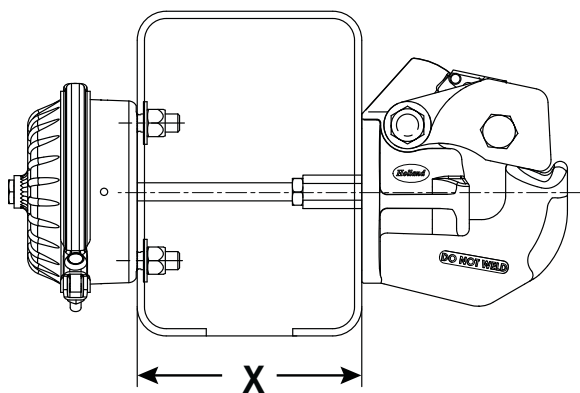
20,000 Lbs. (9,070 Kg)
Maximum Vertical Load

100,000 Lbs. (45,860 Kg)
Maximum Gross Trailer Weight

APPLICATIONS Heavy-duty ‘A’ train (converter dolly) applications for bulk liquids, dry bulk, aggregates and quarry materials.

Patent Pending

Air Chamber Assemblies and Mounting Kits

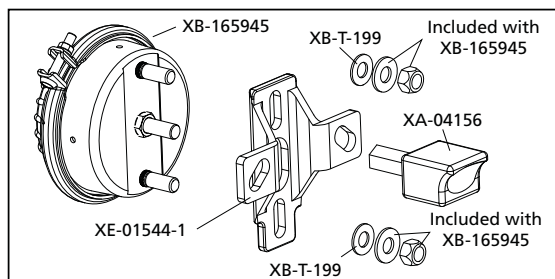


	SELECT "X" DIMENSION FOR MOUNTING	AIR CHAMBER ROD LENGTH	AIR CHAMBER/PLUNGER ASSEMBLY P/N WHEN ORDERED SEPARATELY	PINTLE HOOK PART NUMBERS *****								
PINTLE HOOK ONLY				PH-210RN11	PH-300-1	PH-300-R-1	PH-310RN11	PH-400-1	PH-400-1-H	PH-410RN11	PH-410RN11	
PINTLE HOOK WITH PLUNGER ONLY				PH-210RM11			PH-310RM11			PH-410RM11	PH-419RM11	PH-550-1
PINTLE HOOK WITH COMPLETE AIR CHAMBER ASSEMBLY	.75" - 2.0"	1.8"	XA-02608*	PH-210RA11	PH-300	PH-300-R	PH-310RA11			PH-410RA11	PH-419RA11	
	2.0" - 12.0"	12.0"	XA-10198***	PH-210RF11			PH-310RF11			PH-410RF11	PH-419RF11	
	.75" - 2.25"	1.8"	XA-02608*					PH-400	PH-400-H			
	.50" - 2.25"		XA-09862**									PH-550**

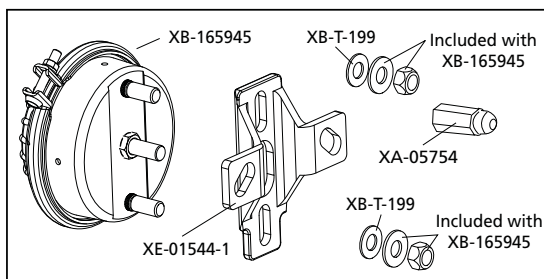
WHAT'S INCLUDED:

- * Includes plunger, mounting bracket, and air chamber.
- ** For PH-550, includes bullet, mounting bracket, and air chamber (plunger is factory installed to the pintle hook).
- *** Includes plunger and air chamber with cut-to-length rod.
- ***** To add the Tethered Lock Inset Pin Option for FastLatch models PH-210, PH-310, PH-410 and PH-419, replace the '11' with '21' in the part number.

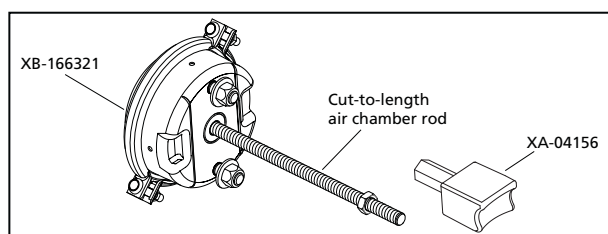
XA-02608



XA-09862



XA-10198



COUPLERS



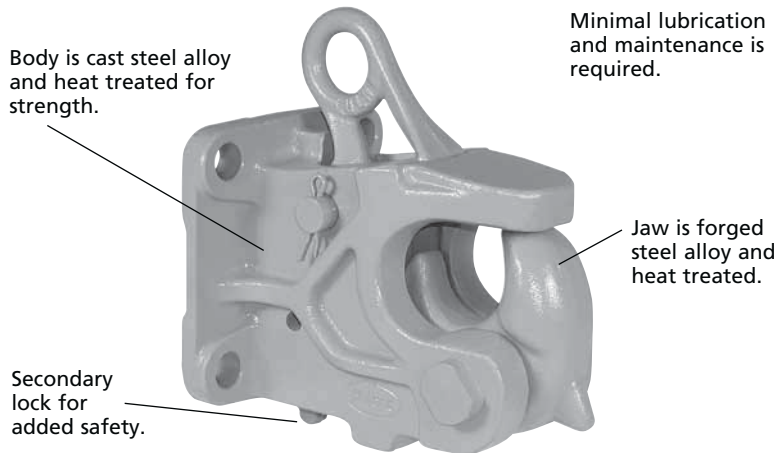
- Rigid Mount
- Swivel Mount
- Pin & Clevis
- Ball Hitch

Coupler – Rigid Mount (Over-the-Road)

CP-400-H

Application

A versatile rigid mount coupler used for trailers and equipment in over-the-road and off-road applications. Especially useful when frequent and automatic coupling is desired, and when the weight of the drawbar makes it impractical to lift. The latch automatically closes and locks upon coupling.



Weight: 26 lbs. (11.8 kg)

Capacities

7,500 lbs. (3,400 kg) Maximum Vertical Load
 30,000 lbs. (13,610 kg) Maximum Gross Trailer Weight

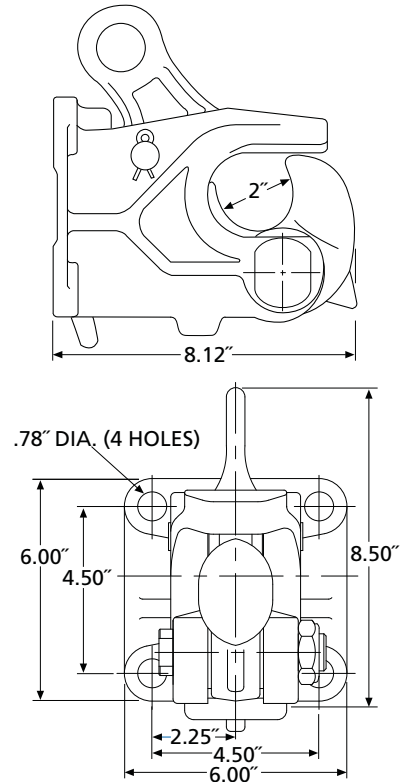
Drawbar Eye Dimensions

2.50" to 3" I.D. with 1.25" to 1.63" diameter section.

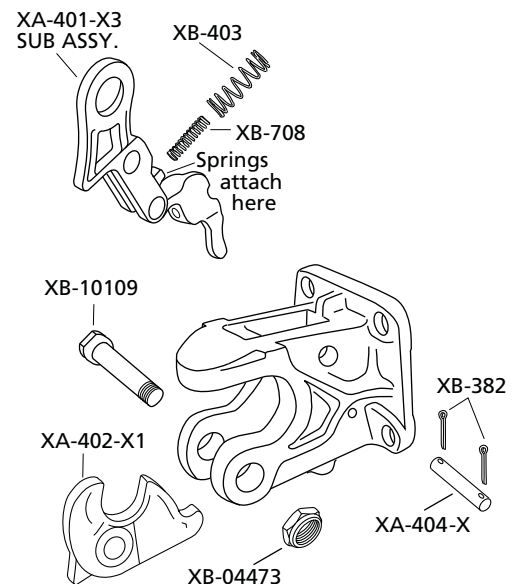
Additional Information

- For severe off-road applications, reduce the above maximum capacities by 25% and use with a swivel-mount drawbar.
- For additional specification detail, refer to document number XL-PH233.

Mounting Dimensions



Replacement Parts



CP-360

Application

A rigid mount coupler used for trailers and equipment in over-the-road and off-road applications. Especially useful when frequent and automatic coupling is desired, and when the weight of the drawbar makes it impractical to lift. The latch automatically closes and locks upon coupling.

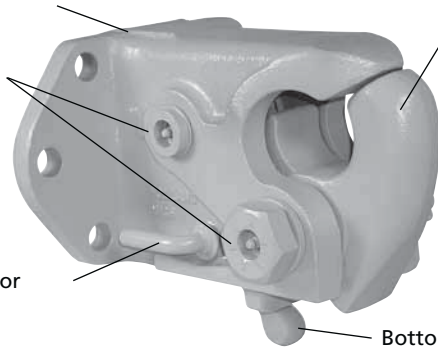
Body is cast steel alloy and heat treated for strength.

Jaw is cast steel alloy and heat treated.

To ensure long life, grease fittings are provided for easy lubrication.

Secondary lock for added safety.

Bottom handle pull is primary lock release.



Weight: 44 lbs. (20 kg)

Capacities

3,000 lbs. (1,360 kg) Maximum Vertical Load
52,000 lbs. (23,590 kg) Maximum Gross Trailer Weight

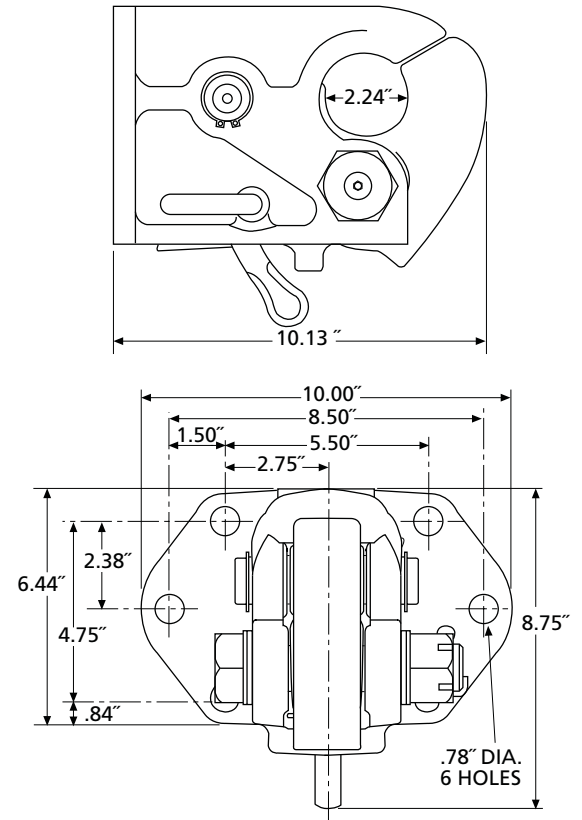
Drawbar Eye Dimensions

2.50" to 3" I.D. with 1.25" to 1.63" diameter section.

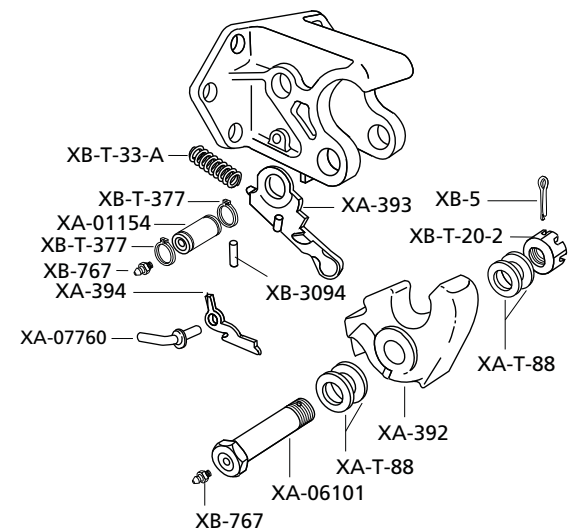
Additional Information

- For severe off-road applications, reduce the above maximum capacities by 25% and use with a swivel-mount drawbar.
- For additional specification detail, refer to document number XL-PH231.

Mounting Dimensions



Replacement Parts



Coupler –Rigid and Swivel Mount (Over-the-Road)

CP-740 and CP-730

Application

A very strong, specialized coupler used for trailers and equipment in over-the-road and off-road applications. Especially useful when frequent and automatic coupling is desired. The latch automatically closed and locks upon coupling.

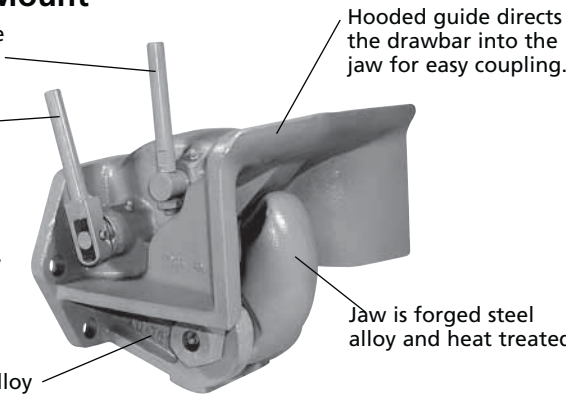
CP-740 Rigid Mount

Primary lock release mechanism.

Secondary lock release mechanism automatically locks for added safety.

To ensure long life, grease fittings (3) are provided for easy lubrication.

Body is cast steel alloy and heat treated.



Weight: 70 lbs. (32.7 kg)

Capacities

20,000 lbs. (9,070 kg) Maximum Vertical Load
 100,000 lbs. (45,360 kg) Maximum Gross Trailer Weight

Drawbar Eye Dimensions

3" I.D. with a 1.63" diameter section.

Additional Information

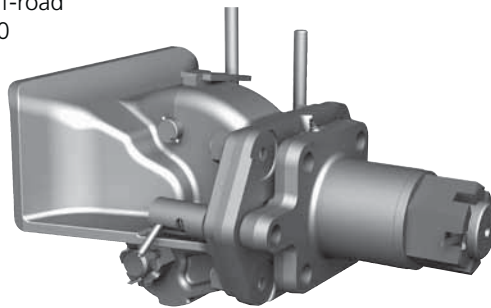
- For severe off-road applications, reduce the above maximum capacities by 25% and use with a swivel-mount drawbar.
- For additional specification detail, refer to document number XL-PH268.

CP-730 Swivel Mount

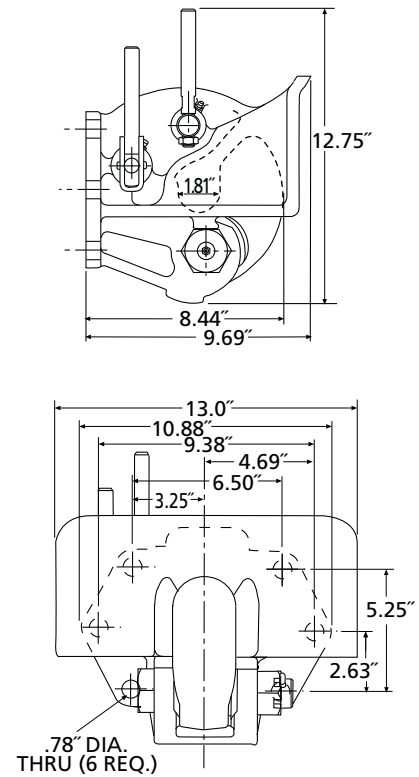
The CP-730 is an on- and off-road coupler featuring the CP-740 coupler with a lubricated, swivel mount housing and spring-loaded lock pin.

When the spring-loaded lock pin is engaged, the coupler remains rigid when coupling, or when towing a trailer equipped with a swivel-style drawbar. Simply disengage the lock pin to return the coupler to swivel mode.

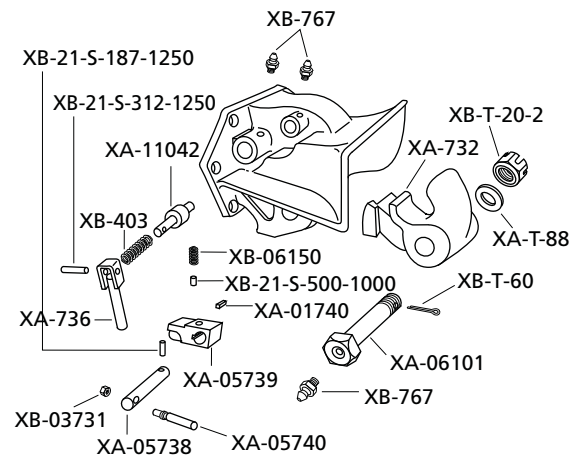
Please contact SAF-HOLLAND for more information.



Mounting Dimensions (CP-740)



Replacement Parts

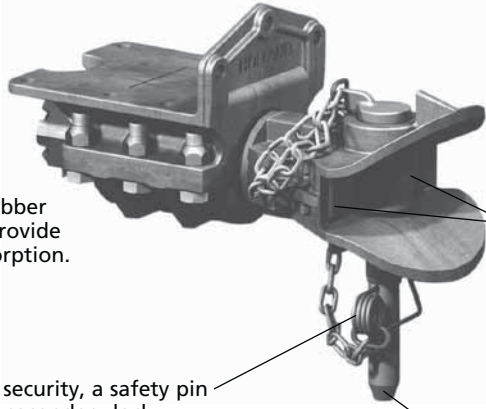


PH-990ST71 (Rubber Cushioned)

Application

A special frame-mount, swivel style pin coupler with a “fish mouth” head and rubber cushions for shock absorption. Designed for extreme-duty trailers and semitrailers in doubles and triples operations. Used for over-the-road and off-road applications.

Easy to maintain and requires no lubrication.



Internal rubber cushions provide shock absorption.

For added security, a safety pin serves as a secondary lock.

‘Fish-mouth’ clevis head helps guide the drawbar into position for easier coupling

Wear plates in fish mouth provide a replaceable wear surface and minimize drawbar ‘slop’.

The clevis pin is forged steel alloy that is heat treated for strength, durability, and wear resistance.

Weight: 160 lbs. (72.6 kg)

Capacities

3,000 lbs. (1,360 kg) Maximum Vertical Load
100,000 lbs. (45,360 kg) Maximum Gross Trailer Weight

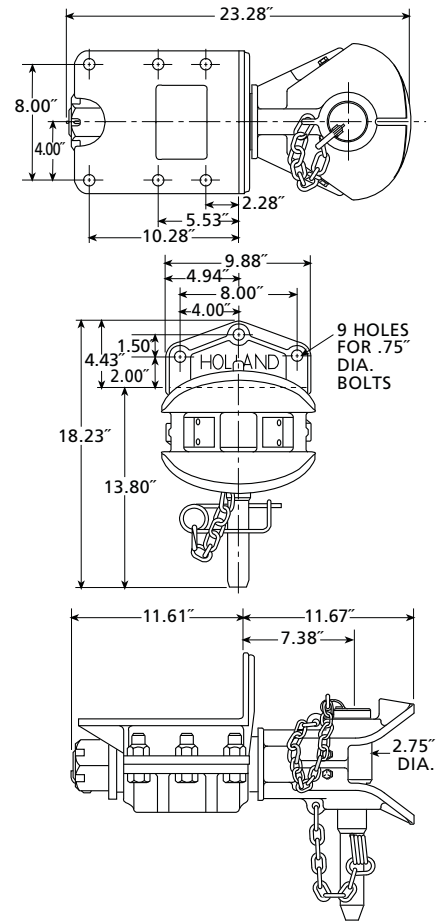
Drawbar Eye Dimensions

3" I.D. with a 1.63" diameter section.

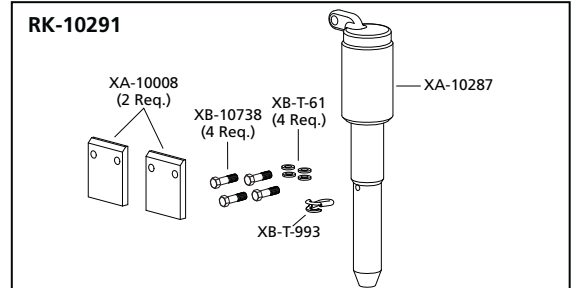
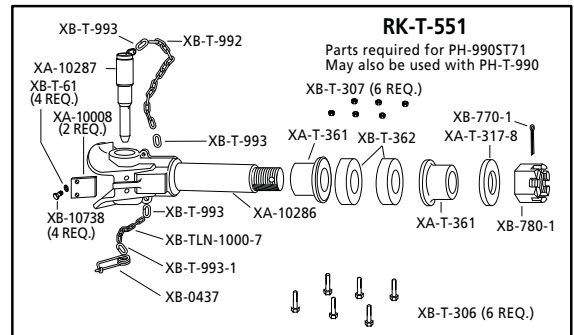
Additional Information

- For severe off-road applications, reduce the above maximum capacities by 25%. Not for use with a swivel-mount drawbar.
- For additional specification detail, refer to document number XL-PH219.

Mounting Dimensions



Replacement Parts



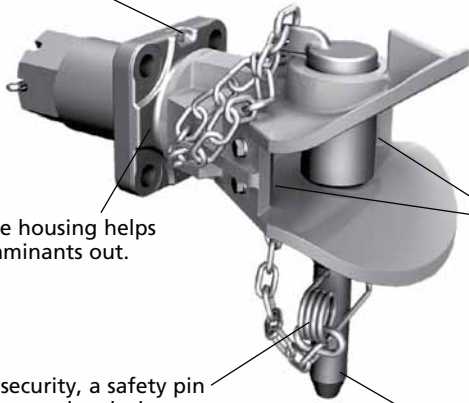
Pin and Clevis Coupler – Swivel Mount (Over-the-Road)

PH-995SH71 (Non-Cushioned)

Application

A non-cushioned swivel-mount pin and clevis coupler designed for over-the-road and off-road applications of drawbar style trailers.

Grease fitting for easy lubrication.



A one-piece housing helps keep contaminants out.

For added security, a safety pin serves as a secondary lock.

'Fish-mouth' clevis head helps guide the drawbar into position for easier coupling

Wear plates in fish mouth provide a replaceable wear surface and minimize drawbar 'slop'.

Large 2.75" (70 mm) diameter clevis pin reduces 'slop' between the pin and drawbar eye.

Weight: 97 lbs. (44 kg)

Capacities

3,000 lbs. (1,360 kg) Maximum Vertical Load
100,000 lbs. (45,360 kg) Maximum Gross Trailer Weight

Drawbar Eye Dimensions

3" I.D. with a 1.63" diameter section.

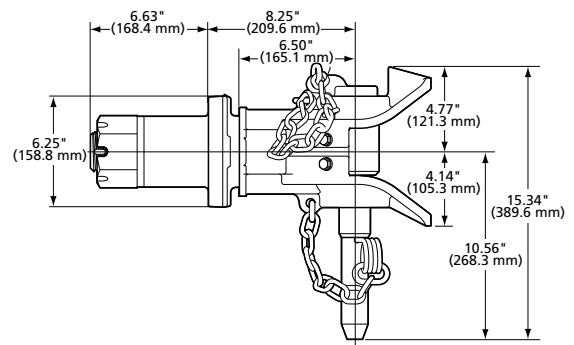
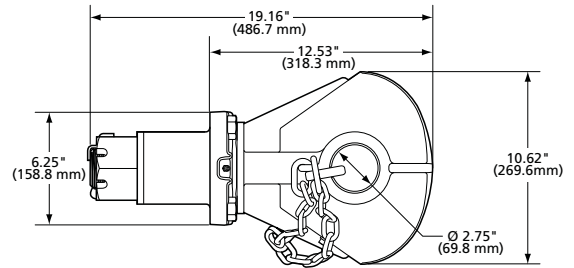
Additional Information

- For severe off-road applications, reduce the above maximum capacities by 25%. Not for use with a swivel-mount drawbar.
- For additional specification detail, refer to document number XL-PH10412UM.

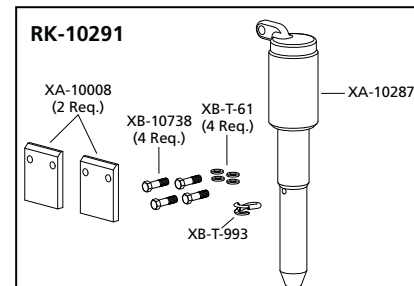
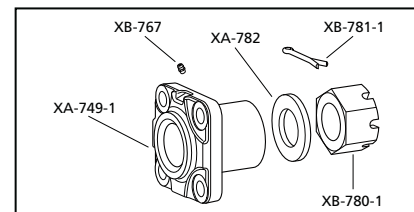
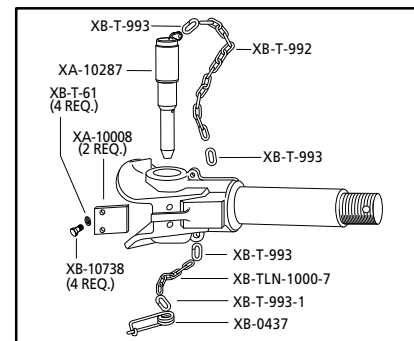
Interchangeable with PH-775-01552, see page 33.



Mounting Dimensions



Replacement Parts



New Installations

Complete Pintle Hook Assembly

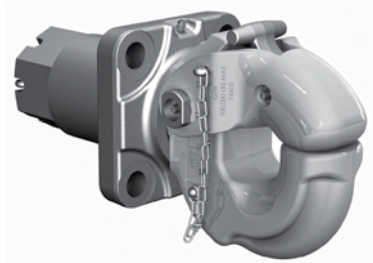
PH-775-01552

Features XA-749-1 Lubricated Housing

100,000 lb. (45,360 kg) Max. GTW

20,000 lb. (9,070 kg) Max. Vertical

See page 16



Complete Pin & Clevis Assembly

PH-995SH71

Features XA-749-1 Lubricated Housing

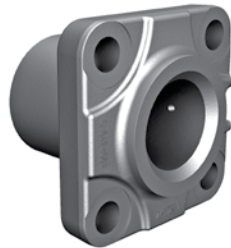
100,000 lb. (45,360 kg) Max. GTW

3,000 lb. (1,360 kg) Max. Vertical

See page 32



Retrofit/Interchange Installations



XA-749-1
Lubricated
Swivel Housing

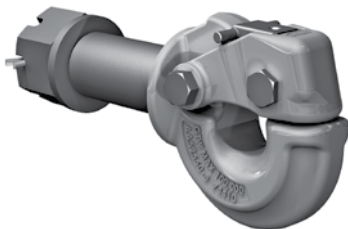
Hook & Latch Sub-Assemblies



PH-775-D

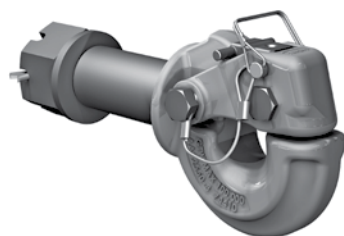
Compatible with XA-749-1
Lubricated Swivel Housing
only

Standard Latch with
Chained Cotter Pin



PH-775SN11 with FastLatch™

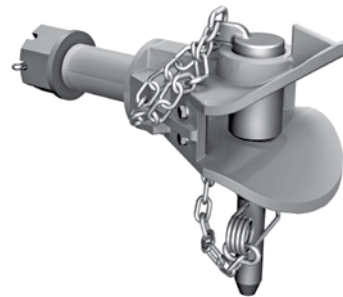
Compatible with XA-749-1
Lubricated and XA-10546
NoLube™ Swivel Housings



PH-775SN21 with FastLatch™ and Tethered Lock Pin

Compatible with XA-749-1
Lubricated and XA-10546
NoLube™ Swivel Housings

Pin & Clevis Sub-Assembly



PH-995SN71

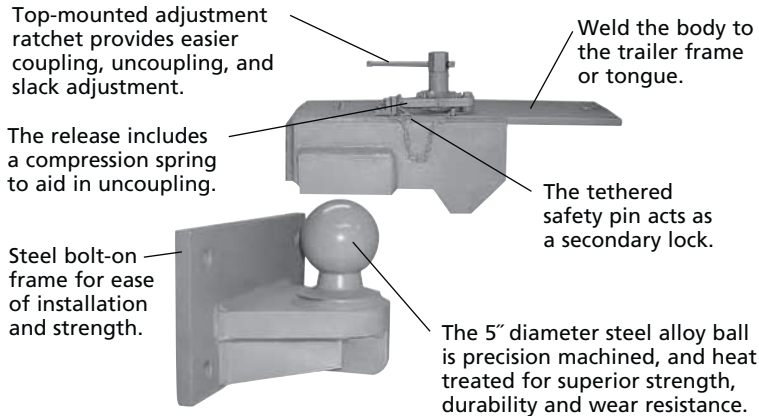
Compatible with XA-749-1
Lubricated Swivel Housing
only

Ball Hitch – Rigid Mount (Over-the-Road)

BH-50 (Includes Ball and Receiver Assemblies)

Application

This ball hitch is ideal for heavy-duty over-the-road applications where high articulation (up to 30°) in all directions is required, and in applications where the vehicle and trailer remain coupled. The BH-50 minimizes reduces chucking.



Weight: 135 lbs. (61.2 kg)

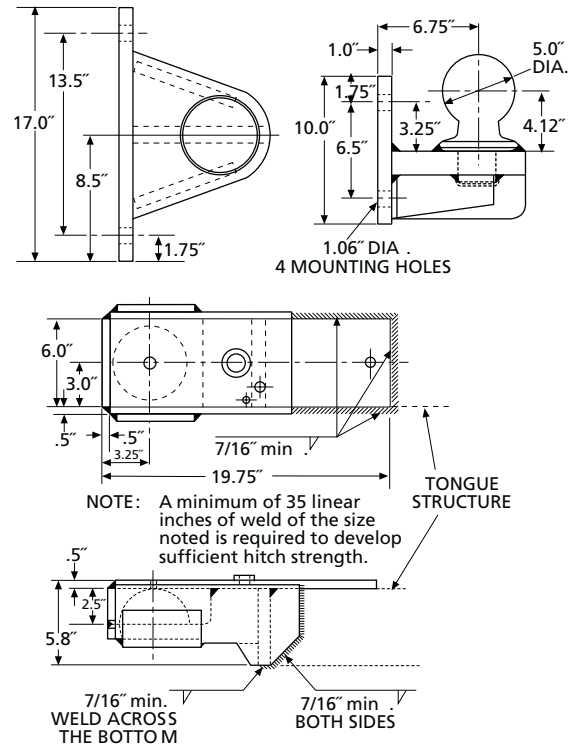
Capacities

8,000 lbs. (3,630 kg) Maximum Vertical Load
80,000 lbs. (36,290 kg) Maximum Gross Trailer Weight

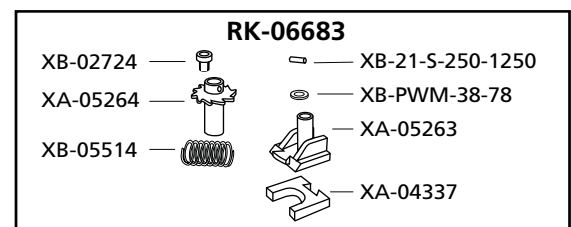
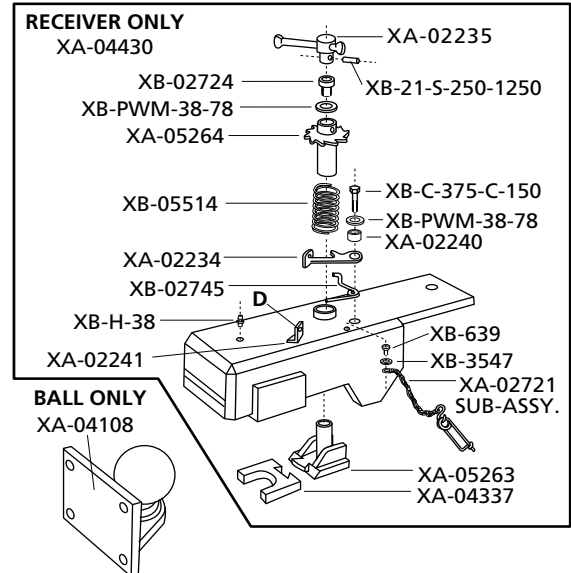
Additional Information

- For additional specification detail, refer to document number XL-PH254.

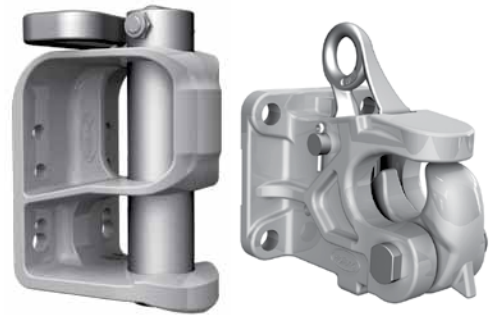
Mounting Dimensions



Replacement Parts



COUPLINGS
INDUSTRIAL / GSE



- Couplers
- E-Hitch
- Lunettes

Coupler – Rigid Mount (Industrial / GSE)

CP-400-GSE and CP-400-CA

Application

Strong rigid mount couplers that are designed for industrial material handling and ground support applications. The CP-400-GSE and CP-400-CA are useful where coupling is frequent, and quick and easy coupling release is desired. The latch automatically closes and locks upon coupling.

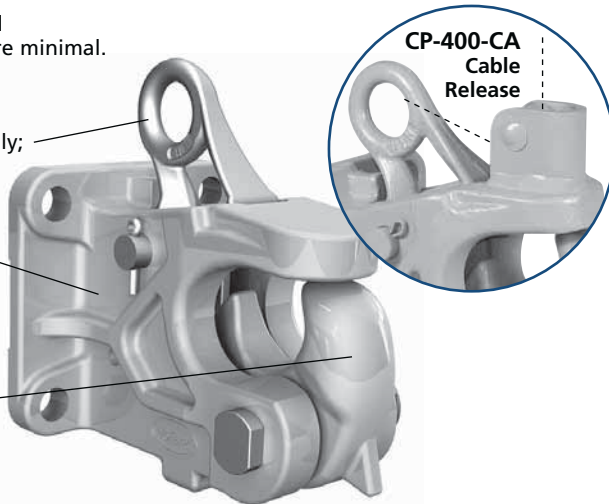
The CP400-CA features an integral roller which accommodates a cable release system to open the coupler from the driver's position.

Lubrication and maintenance are minimal.

Primary lock only; no secondary lock.

Body is cast steel alloy.

Jaw is forged alloy steel and heat treated for strength, toughness, and durability.



Weight: 25 lbs. (11.3 kg)

Capacities

7,500 lbs. (3,400 kg) Maximum Vertical Load
 30,000 lbs. (13,610 kg) Maximum Drawbar Pull

IMPORTANT: There is no secondary lock mechanism. This coupler is not designed for over-the-road applications.

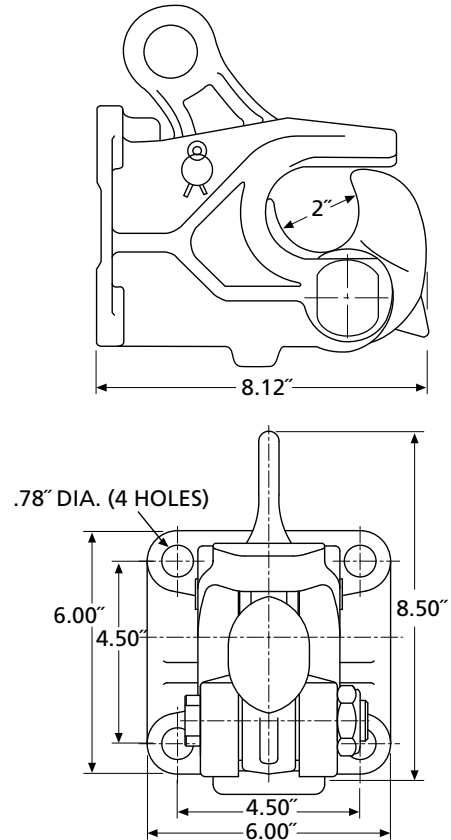
Drawbar Eye Dimensions

2.50" to 3" I.D. with 1.25" to 1.63" diameter section.

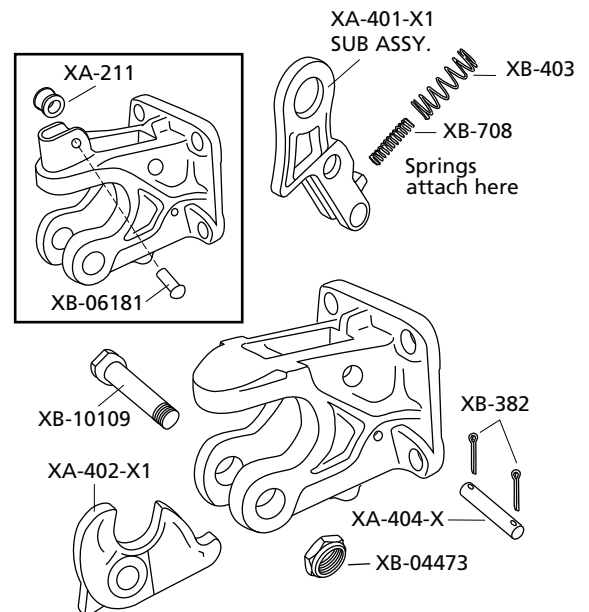
Additional Information

- For more product specific mounting information and operating instructions, refer to SAF-HOLLAND document number XL-PH348 or XL-PH232.

Mounting Dimensions



Replacement Parts

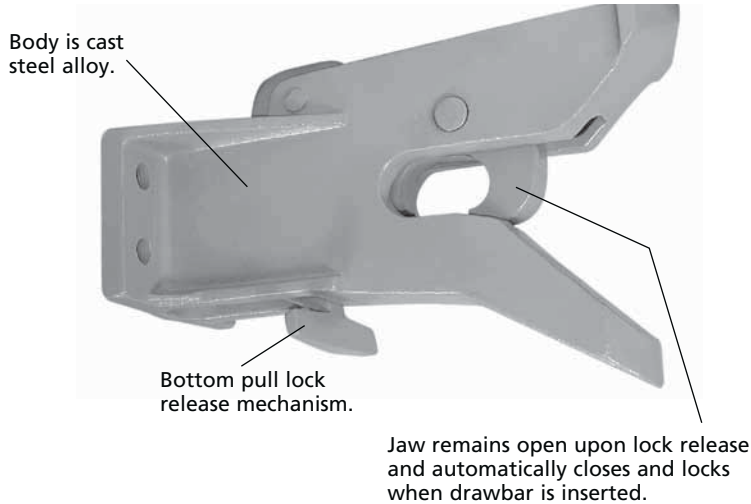


XA-T-150-AF Bolt-On and CP-T-150-S02986 Weld-On

Application

Automatic rigid mount coupler designed for a variety of industrial material handling applications. Useful in instances where coupling is frequent and quick coupling is desired. The latch automatically closes and locks upon coupling.

Available without pre-drilled mounting holes.
Order CP-T-150-S02986.



Weight: 15 lbs. (6.8 kg)

Capacities for both Coupler and Coupler Ring

50 lbs. (23 kg) Maximum Vertical Load
15,000 lbs. (6,800 kg) Maximum Drawbar Pull

IMPORTANT: There is no secondary lock mechanism. This coupler is not designed for over-the-road applications.

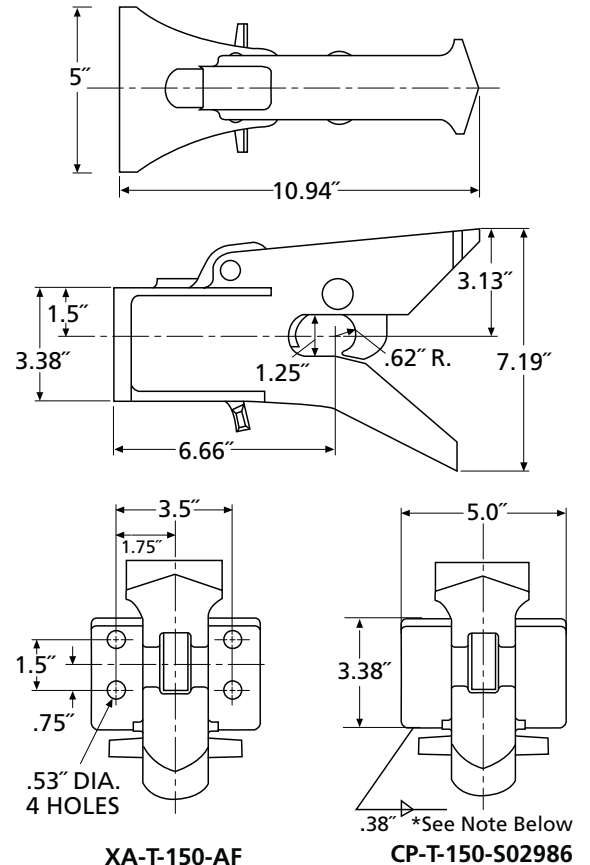
Drawbar Eye Dimensions

Maximum 1" diameter cross-section.

Additional Information

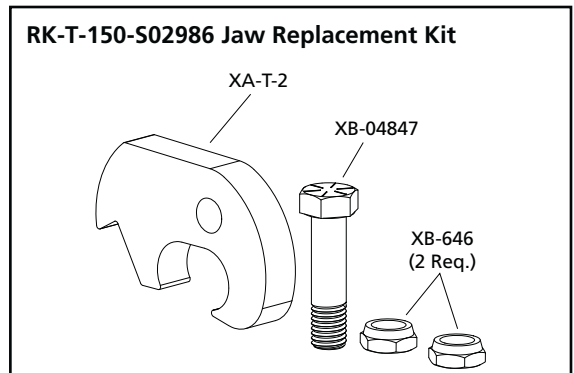
- For more product specific mounting information and operating instructions, refer to SAF-HOLLAND document number XL-PH235.

Mounting Dimensions



NOTE: Maximum of 16.76 linear inches of .38" fillet weld required to develop rated capacity.

Replacement Parts



EH-3050 eHitch™



- 30,000 lb. (13,610 kg) or 50,000 lb. (22,680 kg) Maximum Drawbar Pull, depending on mounting fasteners
- 500 lb. (227 kg) Maximum Vertical Load
- NATO 3" (76mm) Drawbar Eye Compatible

Drawbar Eye Dimensions

2.375" (60mm) to 3.0" (76mm) with maximum 1.75" (44mm) diameter section.

PATENT PENDING DESIGN

- High-strength, cast steel frame, pin and handle.
- Upper Pin Guard and an internally mounted spring helps protect the e-Hitch from impacts.
- The 2.125" (54mm) diameter steel pin minimizes towbar 'slop'. Pin wear is decreased due to its larger surface area and heat-treating to increase hardness.
- Throat area features a negative slope to minimize towbar 'chucking' (bouncing).
- Corrosion resistant coatings on all components. A choice of yellow or white powder coat frame is available.
 - EH-3050-13 Safety Yellow
 - EH-3050-14 White
- Handle is interchangeable between rigid and fold-down settings. Simply remove the handle, turn 180°, and reinstall to provide the other setting.



For additional specification detail, refer to document XL-PH10399.

IMPORTANT: There is no secondary lock mechanism. This coupler is not designed for over-the-road applications.

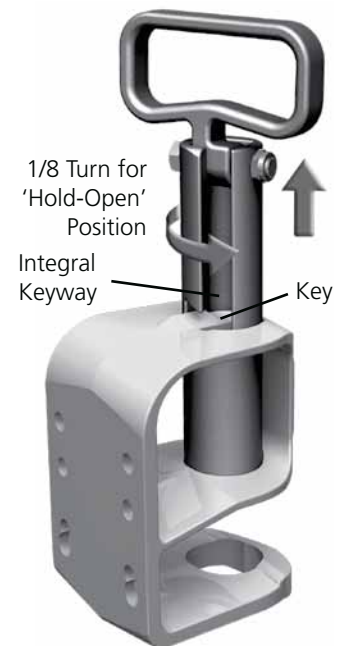
INTERNALLY MOUNTED PIN SPRING AND INTEGRAL KEYWAY FOR HANDS-FREE HOLD OPEN PIN POSITION



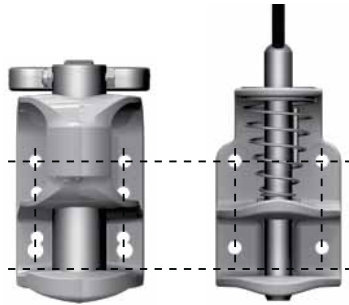
Steel spring is mounted inside the robust pin to protect it from impact damage.

Keyway is designed into the pin, and the key is designed into the frame. This eliminates the need to 'hunt' for the keyway when opening and closing.

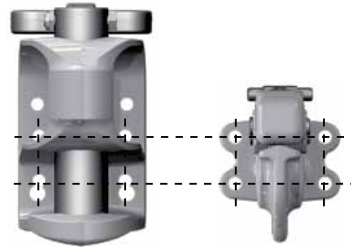
The integral keyway also includes a 'hold-open' position via a 1/8-turn of the handle.



“Flex-Mount” Bolt Pattern

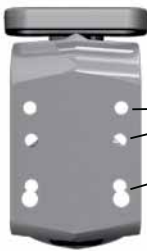


E-HITCH
EH-20
EH-40



PINTLE HOOKS
BH-200RN8
BH-50mmRN
PH-10RP
PH-T-60-AOL-8
PH-30RP

EH-3050 bolt pattern is interchangeable with the above HOLLAND models.



VARIABLE FOUR (4) BOLT MOUNTING PATTERN

Use only Grade 8 bolts.

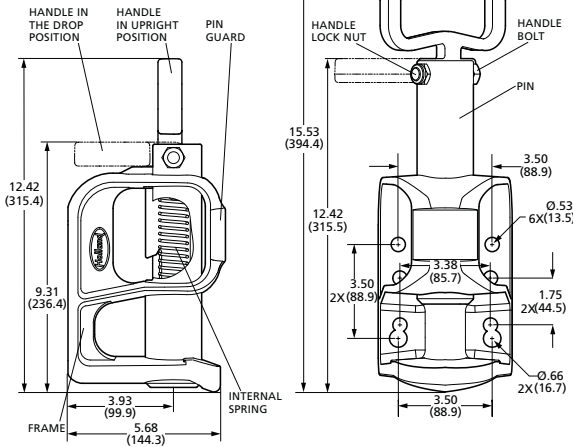
Two 1/2" bolts are required for all installations in either the top or middle rows.

Two bolts are required in the bottom row.

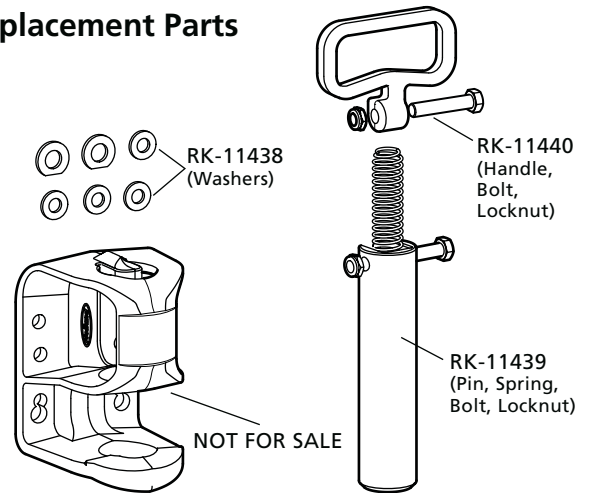
For 30,000 lb. (13,610 kg) MDBP installation, use upper slot sized for 1/2" bolts.

For 50,000 lb. (22,680 kg) MDBP installation, use lower slot sized for 5/8" bolts.

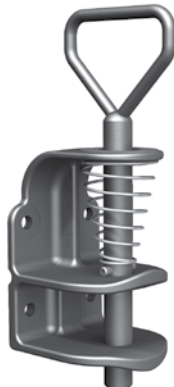
Dimensions - Inch (mm)



Replacement Parts

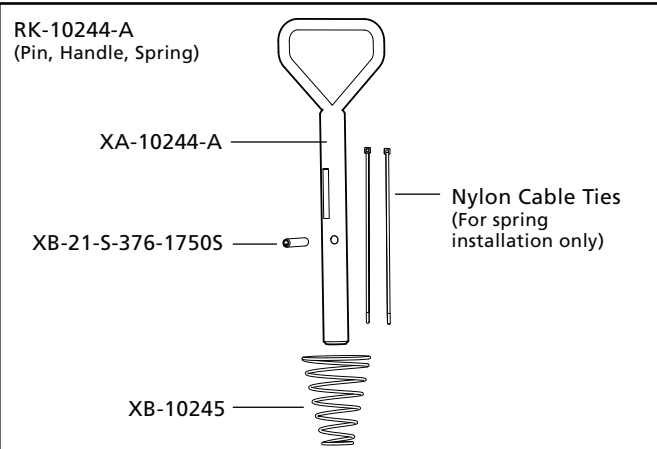


EH-20/40/60 Replacement Parts



Additional Information

- Reference SAF-HOLLAND document number XL-PH347 Replacement Procedure.



DB-010EJ1 and DB-020FK1

- Forged, one-piece steel alloy lunettes
- Non-hardened/non-painted for weldability
- Intended for industrial truck and GSE applications
- Tested in accordance with SAE J847

DB-010EJ1



Weld onto 2"x 4" (11 gauge) structural tubing

DB-020FK1



Forged steel universal weld-on lunette

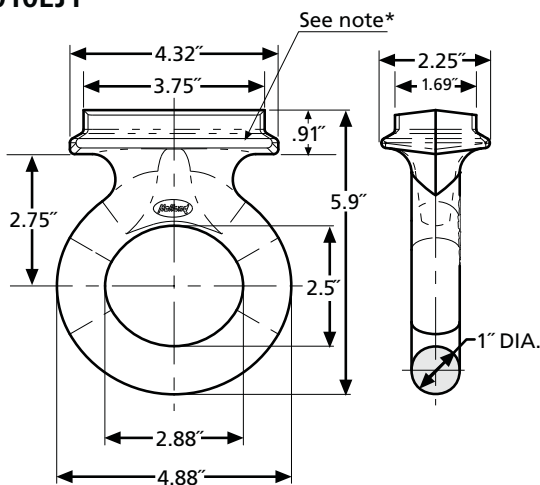
Rigid Tongue Trailers				Hinged Tongue Trailers			
				500 lb. Maximum Vertical Load		Weight	
Capacities		lb.	kg	lb.	kg	lb.	kg
DB-010EJ1 2.88" Eye	GTW	10,000	4,536	20,000	9,072	15	6.8
	VERTICAL	2,000	907	500	227		
DB-020FK1 3" Eye	GTW	20,000	9,072	40,000	18,144	22	10
	VERTICAL	4,000	1,814	500	227		

Additional Information

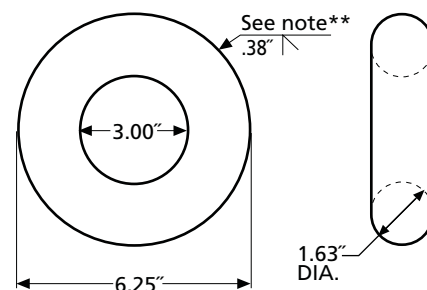
- For additional specifications, refer to document XL-DB124.

Mounting Dimensions

DB-010EJ1



DB-020FK1



*NOTE: A minimum of 12" linear inches of .38" weld on 2"x 4" (11 gauge) structural tubing required to obtain ratings.

**NOTE: 8.5" of linear weld .38" bevel groove weld (3"x 1.25" bar used) required to obtain ratings.

DRAWBARS



- [Compatibility Chart](#)
- [Rigid Mount Bolt-On/Weld-On](#)
- [Air Cushioned](#)
- [Swivel Mount](#)

Drawbar Compatibility



SAF-HOLLAND Group

DRAWBAR NUMBER	NON-ROAD IND/GSE USE ONLY		R	R	R	R	R	R	R	R	R	R	R	
	R	R												
Max Vertical Load	2,000	4,000	3,000	4,000	4,500	6,000	7,000	7,000	8,000	8,000	9,000	9,000	9,000	
GTW	10,000	20,000	15,000	20,000	22,000	30,000	35,000	35,000	40,000	40,000	45,000	45,000	45,000	
GTW w/500 lbs. Vertical	20,000	40,000	50,000	60,000	70,000	38,000	90,000	90,000	60,000	90,000	85,000	85,000	85,000	
Eye I.D. Diameter	2.5"	3"	2.5"	2.5"	3"	2.5"	3"	3"	2.5"	2.38"	3"	3"	3"	
PINTLE HOOK MODEL MAX GTW														
PH-10RP	R	10,000	X	X	X	X	X	X	X	X	X	X	X	X
BH-200RN	R	20,000	X	X	X	X	X	X	X	X	X	X	X	X
BH-50mmRN	R	20,000	X	X	X	X	X	X	X	X	X	X	X	X
PH-T-60-AOS-L-8	S	18,000	X	X	X	X	X	X	X	X	X	X	X	X
PH-T-60-AOL-8	R	30,000	X	X	X	X	X	X	X	X	X	X	X	X
PH-30RP	R	30,000	X	X	X	X	X	X	X	X	X	X	X	X
PH-30SA	S	30,000	X	X	X	X	X	X	X	X	X	X	X	X
PH-30SB	S	30,000	X	X	X	X	X	X	X	X	X	X	X	X
PH-300 / 300-R	R	72,000	X	X	X	X	X	X	X	X	X	X	X	X
PH-210	R	90,000	X	X	X	X	X	X	X	X	X	X	X	X
PH-310	R	100,000	X	X	X	X	X	X	X	X	X	X	X	X
PH-400 / 400-H	R	100,000	X	X	X	X	X	X	X	X	X	X	X	X
PH-410	R	100,000	X	X	X	X	X	X	X	X	X	X	X	X
PH-419	R	100,000	O	X	O	O	X	O	X	X	O	O	X	X
PH-550	R	100,000	X	X	X	X	X	X	X	X	X	X	X	X
PH-760	S	49,000	O	O	O	O	X	O	X	X	O	O	X	X
PH-775	S	100,000	O	O	O	O	X	O	X	X	O	O	X	X
COUPLER MODEL														
CP-400-H	R	30,000	X	X	X	X	X	X	X	X	X	X	X	X
CP-360	R	52,000	X	X	X	X	X	X	X	X	X	O	X	X
CP-730	S	100,000	O	O	O	O	O	O	X	X	O	O	O	X
CP-740	R	100,000	O	O	O	O	O	O	X	X	O	O	O	X
PH-990ST71	S	100,000	O	O	O	O	O	O	X	X	O	O	O	X
PH-995SH71	S	100,000	O	O	O	O	O	O	X	X	O	O	O	X
INDUSTRIAL / AVIATION GROUND SUPPORT EQUIPMENT (Non-Road)														
CP-400-GSE / CA	R	30,000	X	X	X	X	X	X	X	X	X	X	X	X
EH-3050	R	50,000	X	X	X	X	X	X	X	X	X	X	X	X

R = RIGID X = COMPATIBLE
S = SWIVEL O = NOT COMPATIBLE

This information reflects only the dimensional compatibility between HOLLAND lunettes (eyes) and HOLLAND pintle hook horns, coupler jaws and clevis pins.

This information is not an assurance of operational or application compatibility between coupling products. Compatibility of the complete 'coupling system' requires additional information.

Please go to the Reference Sections of this catalog (page 59) for helpful information, including:

- Safety Information
- Coupling System Selection
- Operating Conditions
- Mounting Information



	S	S	R	S	S				R	R	R	R
DB-045BS1	DB-045BW1	DB-610-30	DB-060FQ1	DB-1407-S	DB-1407-SE	DB-1407-L-1	DB-1407-S-1	DB-1407-SE-1	DB-1400	DB-1400AC	DB-1422	DB-100FQ1
9,000	9,000	9,000	15,000	500	500	16,000	16,000	16,000	18,000	18,000	18,000	20,000
45,000	45,000	45,000	60,000	40,000	34,000	85,000	85,000	85,000	90,000	90,000	90,000	100,000
85,000	85,000	85,000	90,000	40,000	34,000	120,000	120,000	120,000	120,000	120,000	120,000	125,000
2.38"	2.38"	3"	3"	2.38"	2.38"	2.38"	2.38"	2.38"	2.38"	2.38"	2.38"	3"
PINTLE HOOK MODEL MAX GTW												
X	X	X	X	X	X	X	X	X	X	X	X	X
X	X	X	X	X	X	X	X	X	X	X	X	X
X	X	X	X	X	X	X	X	X	X	X	X	X
X	O	O	X	O	O	X	X	X	X	X	X	X
X	X	X	X	X	X	X	X	X	X	X	X	X
X	X	X	X	X	X	X	X	X	X	X	X	X
X	O	O	X	O	O	X	X	X	X	X	X	X
X	O	O	X	O	O	X	X	X	X	X	X	X
X	X	X	X	X	X	X	X	X	X	X	X	X
X	X	X	X	X	X	X	X	X	X	X	X	X
X	X	X	X	X	X	X	X	X	X	X	X	X
X	X	X	X	X	X	X	X	X	X	X	X	X
X	X	X	X	X	X	X	X	X	X	X	X	X
O	O	X	X	O	O	O	O	O	O	O	O	X
X	X	X	X	X	X	X	X	X	X	X	X	X
O	O	O	X	O	O	O	O	O	O	O	O	X
O	O	O	X	O	O	O	O	O	O	O	O	X
COUPLER MODEL												
X	X	X	X	X	X	X	X	X	X	X	X	X
O	O	X	X	O	O	O	O	O	O	O	O	X
O	O	X	O	O	O	O	O	O	O	O	O	O
O	O	X	O	O	O	O	O	O	O	O	O	O
O	O	O	O	O	O	O	O	O	O	O	O	O
O	O	O	O	O	O	O	O	O	O	O	O	O
INDUSTRIAL / AVIATION GROUND SUPPORT EQUIPMENT (Non-Road)												
X	X	X	X	X	X	X	X	X	X	X	X	X
X	X	X	X	X	X	X	X	X	X	X	X	X

R = RIGID X = COMPATIBLE
 S = SWIVEL O = NOT COMPATIBLE

This information reflects only the dimensional compatibility between HOLLAND lunettes (eyes) and HOLLAND pintle hook horns, coupler jaws and clevis pins.

This information is not an assurance of operational or application compatibility between coupling products. Compatibility of the complete 'coupling system' requires additional information.

Please go to the Reference Sections of this catalog (page 59) for helpful information, including:

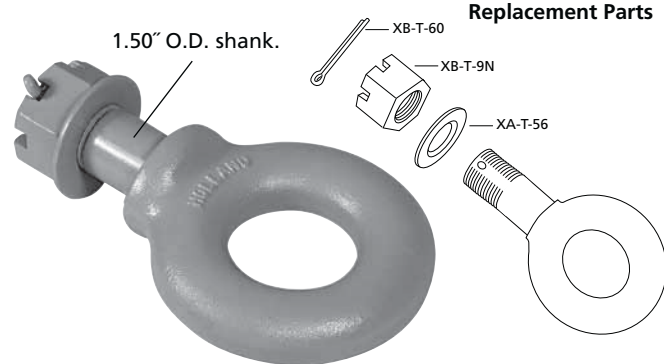
- Safety Information
- Coupling System Selection
- Operating Conditions
- Mounting Information

Drawbars – Rigid Mount Bolt-On (Shank Mount)

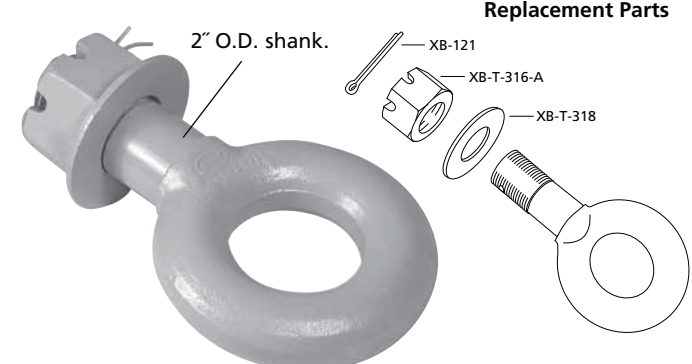
DB-1250-3 and DB-1249-2H

- Forged, one-piece steel alloy drawbar
- Heat treated for strength
- I.D. of eye is induction hardened for wear resistance
- Tested in accordance with SAE J847

DB-1250-3



DB-1249-2H



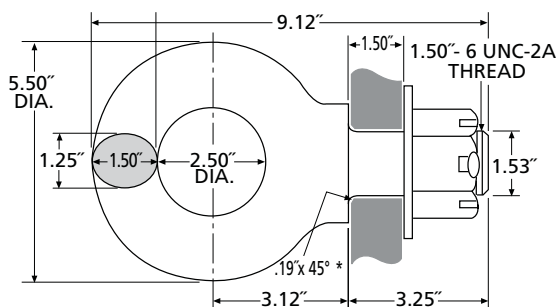
Rigid Tongue Trailers				Hinged Tongue Trailers			
Capacities		lb.	kg	500 lb. Max. Vertical Load		Weight	
				lb.	kg	lb.	kg
DB-1250-3 2.5" Eye	GTW	15,000	6,804	50,000	22,680	9	4
	VERTICAL	3,000	1,361	500	227		
DB-1249-2H 3" Eye	GTW	45,000	20,412	85,000	38,556	14	6.4
	VERTICAL	9,000	4,082	500	227		

Additional Information

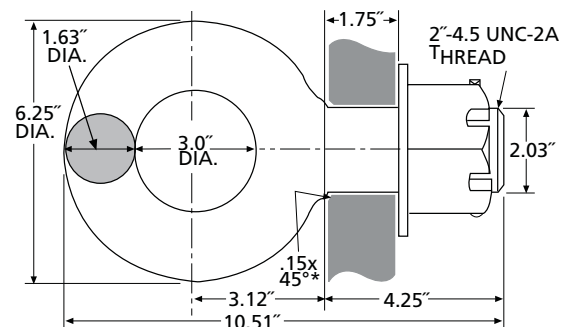
- Not recommended for swivel mount applications.
- When mounted, high clamp force is required to provide rated capacities.
- For off-road applications, reduce published capacities by 25% and use with swivel-mount coupling.
- For additional specifications, refer to documents XL-DB104 and XL-DB103.

Mounting Dimensions

DB-1250-3



DB-1249-2H

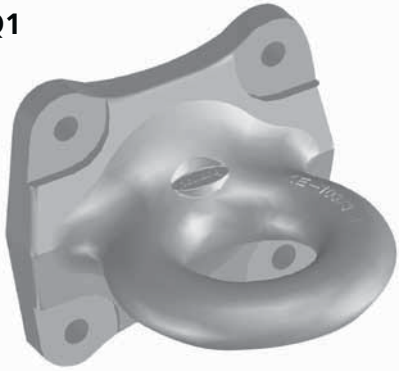


*NOTE: The mounting surface must have an adequate chamfer, as shown above, so that the drawbar mounts flush with the mounting surface.

DB-040DQ1, DB-060FQ1 and DB-100FQ1

- Forged, one-piece steel alloy drawbar
- Heat treated for strength
- Tested in accordance with SAE J847.

DB-040DQ1



**DB-060FQ1
DB-100FQ1**



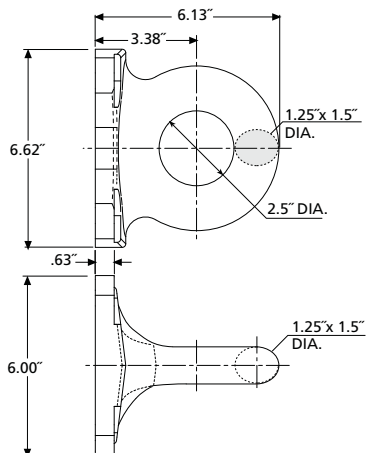
Rigid Tongue Trailers				Hinged Tongue Trailers					
				500 lb. Max. Vertical Load		Dimension 'A'	Grade 8 Fastener Size	Weight	
Capacities		lb.	kg	lb.	kg			lb.	kg
DB-040DQ1 2.5" Eye	GTW	40,000	18,144	60,000	27,216	0.656"	5/8"	14	6.4
	VERTICAL	8,000	3,629	500	227				
DB-060FQ1 3" Eye	GTW	60,000	27,216	90,000	40,824	0.780"	3/4"	19	8.6
	VERTICAL	15,000	6,804	500	227				
DB-100FQ1 3" Eye	GTW	100,000	45,360	125,000	56,700	0.910	7/8"	19	8.6
	VERTICAL	20,000	9,072	500	227				

Additional Information

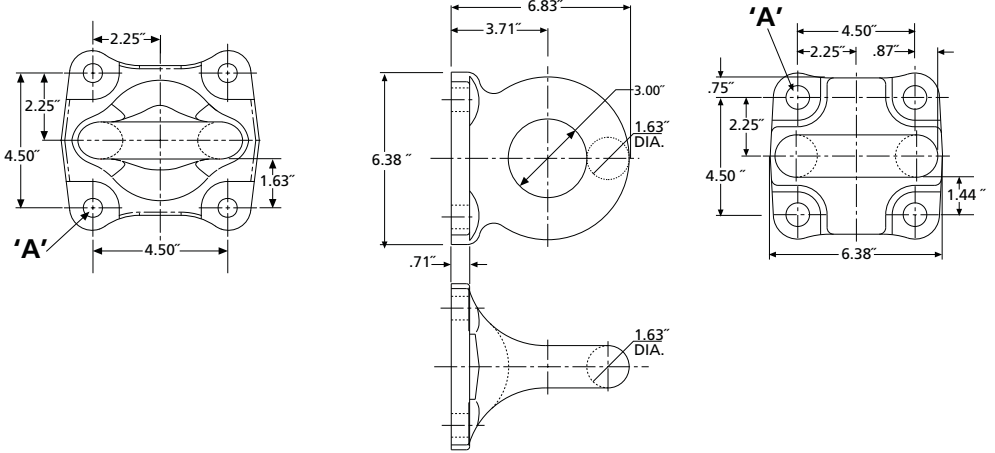
- **IMPORTANT – DO NOT WELD** – Not designed for welded installation.
- Use only Grade 8 bolts and Grade C locknuts
- For off-road applications, reduce published capacities by 25% and use with swivel-mount coupling.
- For additional specifications, refer to documents XL-DB126 and XL-DB125.

Mounting Dimensions

DB-040DQ1

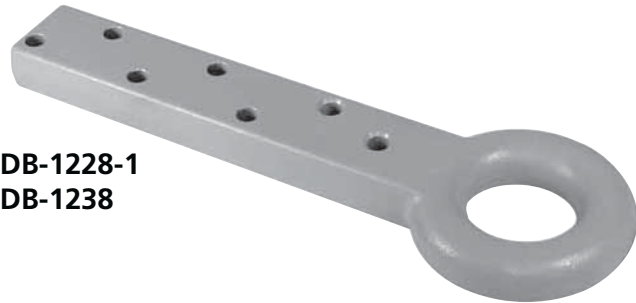


DB-060FQ1 & DB100FQ1



DB-1228-1, DB-1238, DB-1245-1, DB-1235-1 & DB-1235-3

- Forged, one-piece steel alloy drawbars
- Heat treated for strength
- I.D. of eye is induction hardened for wear resistance.
- Tested in accordance with SAE J847.



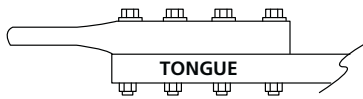
**DB-1228-1
DB-1238**



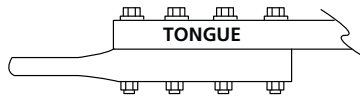
**DB-1245-1
DB-1235-1
DB-1235-3**

Rigid Tongue Trailers

SAF-HOLLAND testing confirms that the type of drawbar mount for a rigid tongue trailer can affect the vertical load capacity of the tongue/drawbar assembly due to the bolt loads associated with the particular mounting type (reference chart below).



Over-Tongue Mount



Under-Tongue Mount

Vertical rating may be increased by 50% from over-tongue mount.

Hinged Tongue Trailers

When used in hinged tongue trailer applications where maximum vertical load cannot exceed 500 lbs. (227 kg).

Hinged tongue capacities are not affected by over/under-tongue mounting.

Rigid Tongue Trailers				Hinged Tongue Trailers					
	Capacities	lb.	kg		lb.	kg		lb.	kg
DB-1228-1 2.5" ID Eye	GTW	20,000	9,072	GTW	20,000	9,072	GTW	60,000	27,216
	VERTICAL	4,000	1,814	VERTICAL	6,000	2,722	VERTICAL	500	227
DB-1238 3" ID Eye	GTW	22,000	9,979	GTW	22,000	9,979	GTW	70,000	31,752
	VERTICAL	4,500	2,041	VERTICAL	6,750	3,062	VERTICAL	500	227
DB-1245-1 2.38" ID Eye	GTW	40,000	18,144	GTW	40,000	18,144	GTW	90,000	40,824
	VERTICAL	8,000	3,629	VERTICAL	12,000	5,433	VERTICAL	500	227
DB-1235-3 3" ID Eye	GTW	35,000	15,876	GTW	35,000	15,875	GTW	90,000	40,824
	VERTICAL	7,000	3,175	VERTICAL	10,500	4,763	VERTICAL	500	227
DB-1235-1 3" ID Eye	GTW	35,000	15,876	GTW	35,000	15,876	GTW	90,000	40,824
	VERTICAL	7,000	3,175	VERTICAL	10,500	4,763	VERTICAL	500	227

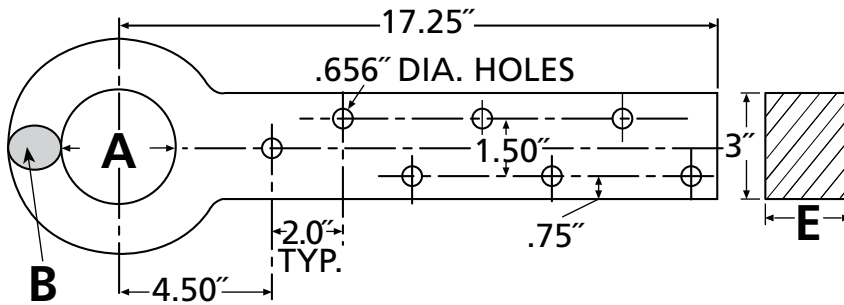
Additional Information

- SAF-HOLLAND recommends that all bolt holes be used.
- Use only Grade 8 bolts and Grade C locknuts.
- **IMPORTANT – DO NOT WELD** – Not designed for welded installation.
- For off-road applications, reduce published capacities by 25% and use with swivel-mount coupling.
- For additional specifications, refer to document XL-DB101.

Mounting Dimensions

DB-1228-1

DB-1238



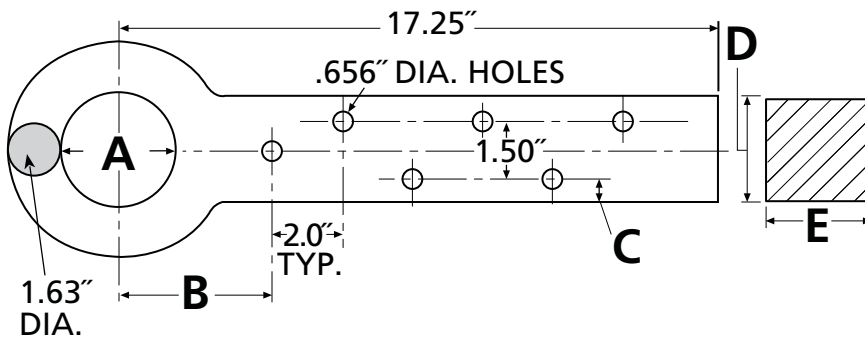
	Dimensions			Weight	
	A	B	E	lb.	kg
DB-1228-1	2.50"	1.25" x 1.50" Oval	1.25	20	9.1
DB-1238	3.0"	1.63" Round	1.62"	26	11.8

Mounting Dimensions

DB-1245-1

DB-1235-1

DB-1235-3



	Dimensions					Weight	
	A	B	C	D	E	lb.	kg
DB-1245-1	2.38"	6.0"	0.75"	3.0"	3.0"	41	18.6
DB-1235-3	3.0"	6.5"	0.75"	3.0"	3.0"	41	18.6
DB-1235-1	3.0"	6.0"	0.82"	3.12"	3.12"	42	19.1

DB-1400 and DB-1422

- Forged, one-piece steel alloy drawbar
- I.D. of eye is induction hardened for wear resistance
- Tested in accordance with SAE J847

DB-1400

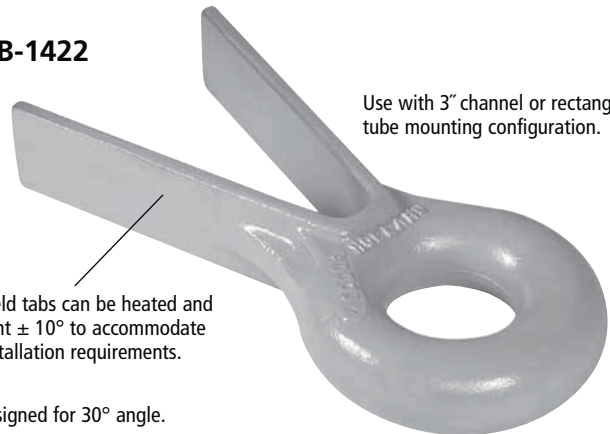
Use with 3" channel or square tubing.



Designed for 20° minimum and 60° maximum angle.

DB-1422

Use with 3" channel or rectangular tube mounting configuration.



Weld tabs can be heated and bent $\pm 10^\circ$ to accommodate installation requirements.

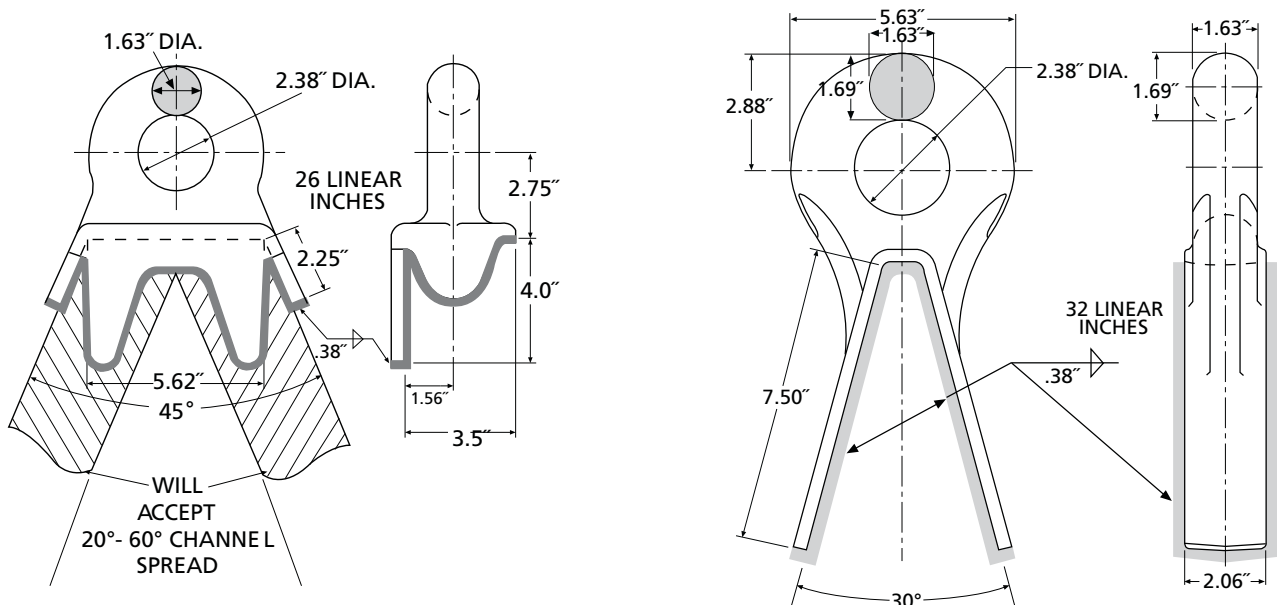
Designed for 30° angle.

Rigid Tongue Trailers				Hinged Tongue Trailers			
				500 lb. Max. Vertical Load		Weight	
Capacities		lb.	kg	lb.	kg	lb.	kg
DB-1400 2.38" Eye	GTW	90,000	40,824	120,000	54,432	14	6.4
	VERTICAL	18,000	8,165	500	227		
DB-1422 2.38" Eye	GTW	90,000	40,824	120,000	54,432	11	5
	VERTICAL	18,000	8,165	500	227		

Additional Information

- For off-road applications, reduce the published capacities by 25% and use with a swivel-mount coupling.
- For additional specifications, refer to documents XL-DB113 and XL-DB116.

Mounting Dimensions



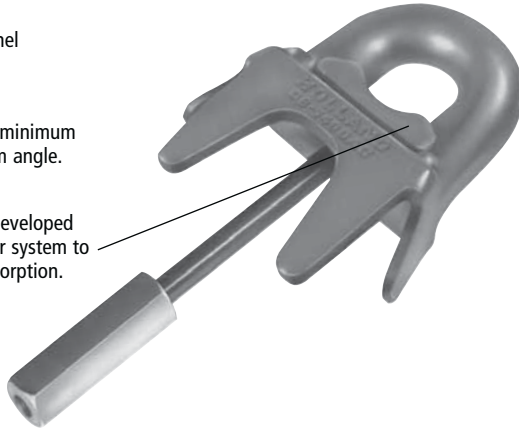
DB-1400AC Series: DB-1400AC-1, DB-1400AC-2, DB-1400AC-3, DB-1400AC-4

- Forged, one-piece steel alloy drawbar
- I.D. of eye is induction hardened for wear resistance
- Tested in accordance with SAE J847

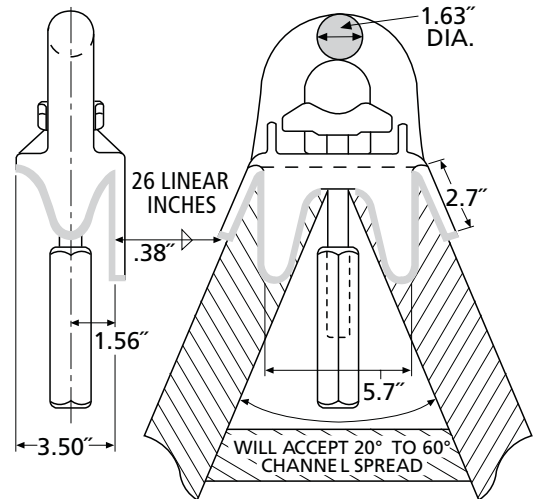
Use with 3" channel or square tubing.

Designed for 20° minimum and 60° maximum angle.

Snubber force is developed by the vehicle's air system to provide shock absorption.



Mounting Dimensions

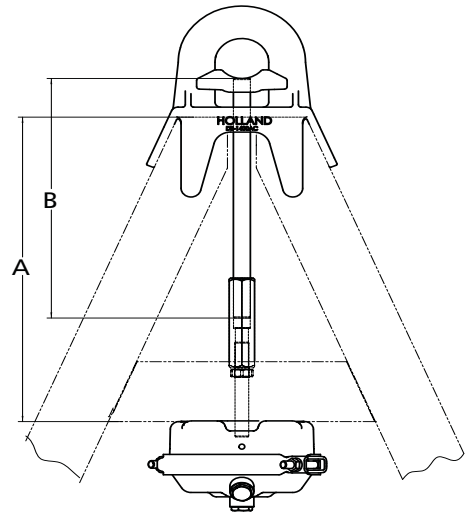
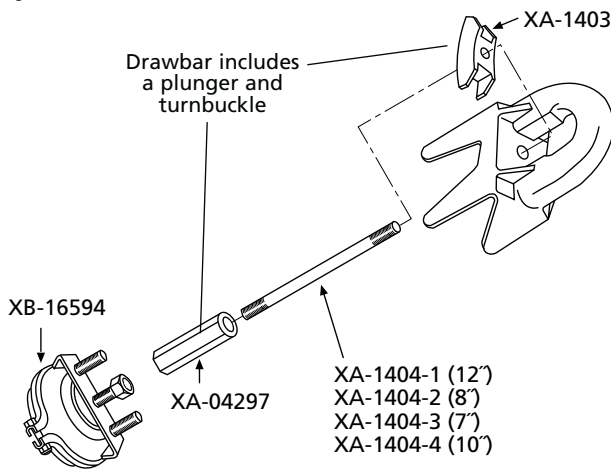


Rigid Tongue Trailers				Hinged Tongue Trailers			
				500 lb. Max. Vertical Load		Weight	
	Capacities	lb.	kg	lb.	kg	lb.	kg
DB-1400AC	GTW	90,000	40,824	120,000	54,432	14	6.4
2.38" Eye	VERTICAL	18,000	8,165	500	227		

Additional Information

- For off-road applications, reduce the published capacities by 25% and use with a swivel-mount coupling.
- For additional specifications, refer to document XL-DB114.

Replacement Parts



A = Distance required to mount air chamber
B = Rod length

MODEL*	DIM "A"	DIM "B"
DB-1400AC-1	15.25"	12.00"
DB-1400AC-2	11.25"	8.00"
DB-1400AC-3	10.25"	7.00"
DB-1400AC-4	13.25"	10.00"

*Air cylinder is NOT included; order separately.

DB-1407

- Forged, one-piece steel alloy drawbar
- Heat treated for strength
- I.D. of eye is induction hardened for wear resistance
- Tested in accordance with SAE J847

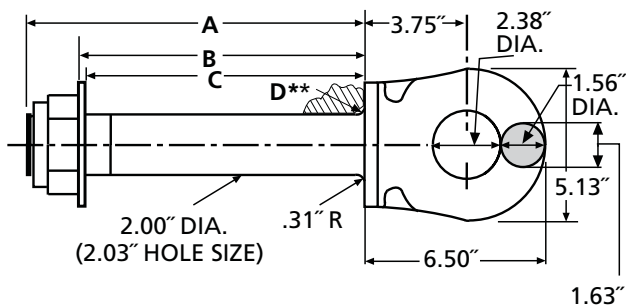


Rigid Tongue Trailers				Hinged Tongue Trailers		
				500 lb. Max. Vertical Load		
	Capacities	lb.	kg		lb.	kg
DB-1407-L-1/-S-1/-SE-1	GTW	85,000	38,556	GTW	120,000	54,432
2.38" Eye	VERTICAL	16,000	7,258	VERTICAL	500	227

Additional Information

- For off-road applications, reduce the published capacities by 25% and use with a rigid-mount coupling.
- For additional specifications, refer to document XL-DB117.

Mounting Dimensions

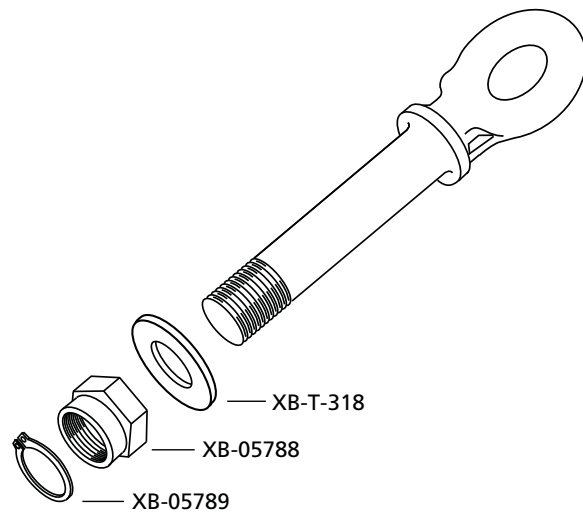


MODEL NO.	A	B	C	**CHAMFER D	WEIGHT	
					lb.	kg
DB-1407-S-1*	11.62"	9.6"	9.5"	.38" x 45°	24	10.9
DB-1407-L-1*	12.25"	10.3"	10.1"	.38" x 45°	25	11.3
DB-1407-SE-1*	13.13"	11.1"	11.0"	.38" x 45°	26	11.8

* Includes drawbar washer, nut and retaining ring.

** The mounting surface must have adequate chamfer, as shown above, so that the drawbar mounts flush with the mounting surface.

Replacement Parts



DB-1407-SE and DB-1407-S Weld-On Assemblies

- Steel housing features replaceable rubber bushings
- Forged, one-piece steel alloy drawbar
- Heat treated for strength
- I.D. of eye is induction hardened for wear resistance
- Tested in accordance with SAE J847



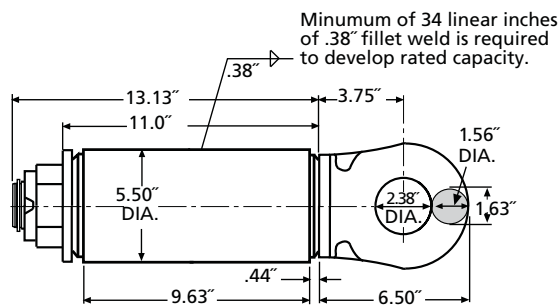
Hinged Tongue Trailers		500 lb. Max. Vertical Load		Weight	
Capacities		lb.	kg	lb.	kg
DB-1407-SE 2.38" Eye	GTW	34,000	15,422	50	22.6
	VERTICAL	500	227		
DB-1407-S 2.38" Eye	GTW	40,000	18,144	45	20.4
	VERTICAL	500	227		

Additional Information

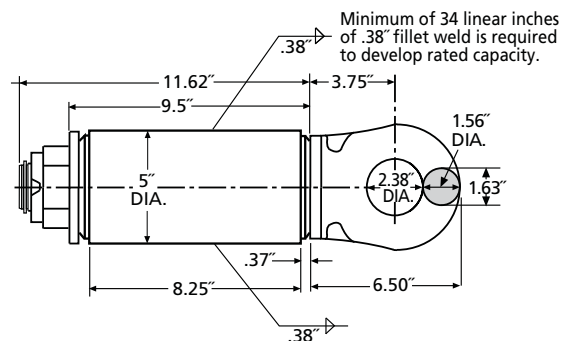
- Rubber cushioned housings are recommended for hinged tongue trailer applications only.
- For off-road applications, reduce the published capacities by 25% and use with a swivel-mount coupling.
- For additional specifications, refer to documents XL-DB119 and 118.

Mounting Dimensions

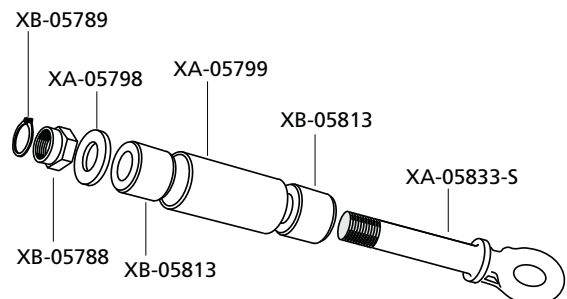
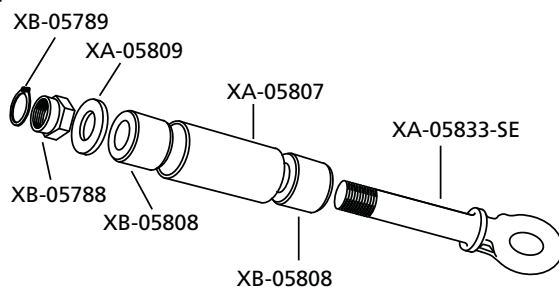
DB-1407-SE



DB-1407-S



Replacement Parts



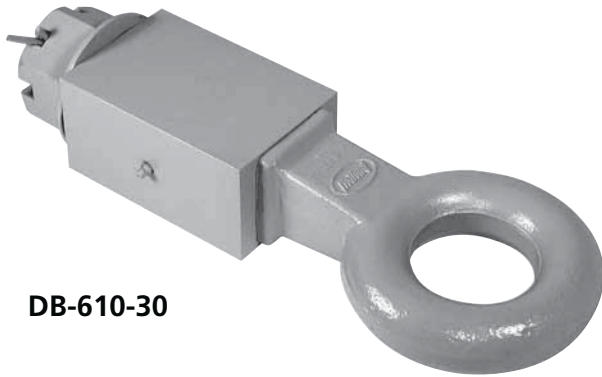
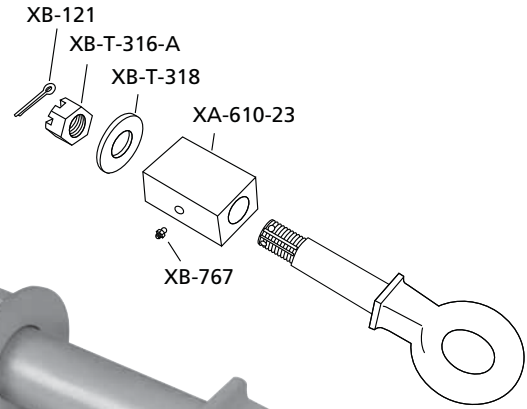
DB-610-30 Weld-On Assembly

- Steel block housing features close dimensional tolerances
- Features grease zerk for easy lubrication

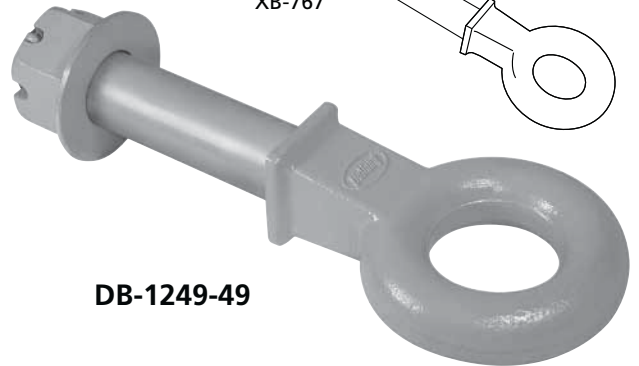
DB-1249-49 Bolt-On Drawbar

- Forged, one-piece steel alloy drawbar
- Heat treated for strength
- I.D. of eye is induction hardened for wear resistance
- Tested in accordance with SAE J847

Replacement Parts



DB-610-30



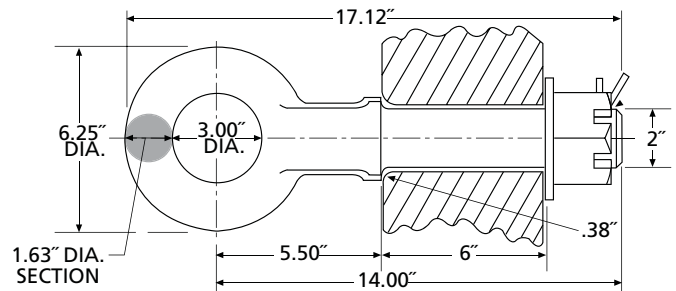
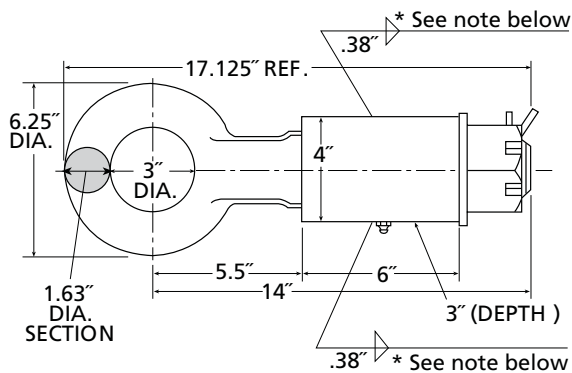
DB-1249-49

	Rigid Tongue Trailers			Hinged Tongue Trailers			
	Capacities	lb.	kg	500 lb. Max. Vert. Load		Weight	
				lb.	kg	lb.	kg
DB-610-30 Assembly 3" Eye	GTW VERTICAL	45,000 9,000	20,412 4,082	85,000 500	38,556 227	36	16.3
DB-1249-49 Drawbar 3" Eye	GTW VERTICAL	45,000 9,000	20,412 4,082	85,000 500	38,556 227	24	10.9

Additional Information

- For off-road applications, reduce the published capacities by 25% and use with a rigid-mount coupling.
- For additional specifications, refer to document XL-DB109 or XL-DB106.

Mounting Dimensions



***NOTE:** Minimum of 24 linear inches of .38" fillet weld required to develop rated capacity.

NOTE: The mounting surface must have an adequate chamfer, as shown above, so that the drawbar mounts flush with the mounting surface.



THIS PAGE INTENTIONALLY LEFT BLANK

COUPLING ACCESSORIES



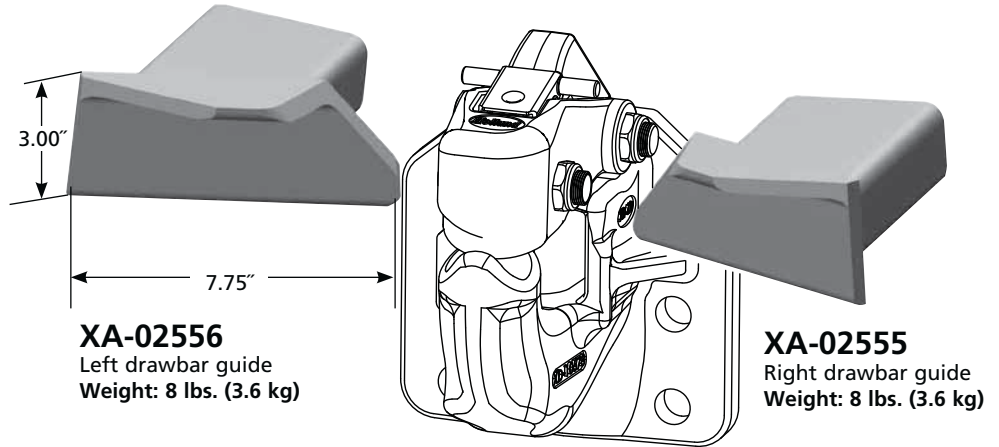
- Drawbar Guides
- Pintle Hook Wear Gages
- Plunger Adjustment Gages
- Tow Hooks
- Dolly Master

Drawbar Guides: XA-02556 (left) and XA-02555 (right)

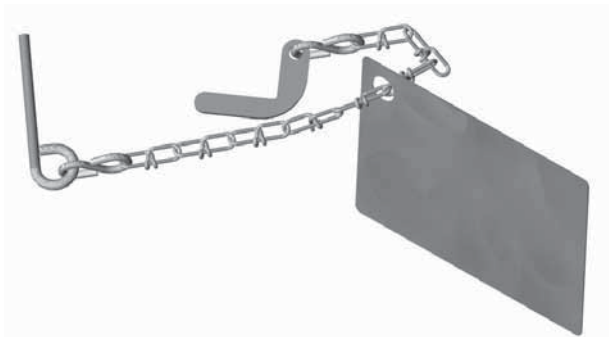
Application

Used in conjunction with PH-210, PH-300(R), PH-310, PH-400(H), PH-410, PH-419 and PH-550 Series pintle hooks to simplify the coupling procedure by guiding the drawbar into the pintle hook throat.

For installation instructions, refer to document number XL-PH353.



Pintle Hook Wear Gages



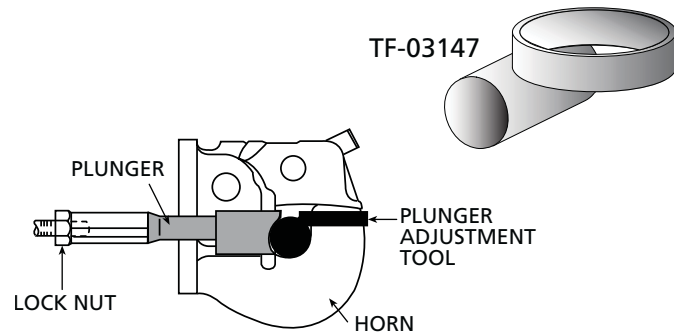
PINTLE HOOK	WEAR GAGE
PH-550	TF-10520
PH-200, PH-210, PH-300, PH-400, PH-400-H, PH-310 & PH-410	TF-10612 (shown)
PH-760 and PH-775	TF-10521
PH-T-60-AOL-8, PH-T-60-AOS-L-8, PH-30, PH-35	TF-10522
PH-T-90-A and PH-T-126-A	TF-10523
PH-30RP, PH-30SA, PH-30SB	TF-10960
PH-10RP with Frame Numbers XD-11047 or XE-10634	TF-10960
PH-10RP with Frame Number XD-11047-10	TF-11402

Plunger Adjustment Gages

Application

The plunger adjustment gage establishes proper air cylinder plunger adjustment.

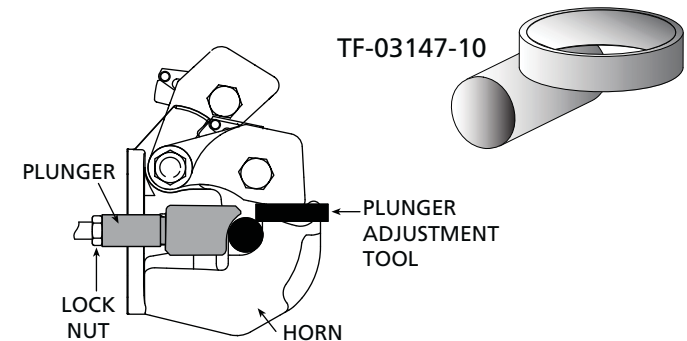
PH-200, PH-300, PH-400, PH-400-H and PH-550 Series



Product Information

- For more product specific mounting information and operating instructions, refer to document number XL-PH304.

PH-210, PH-310 and PH-410 Series



- Not available for PH-419



SAF-HOLLAND Group

Tow Hooks – Heavy-Duty

TH-10050-3 and TH-10050-5

Application

Super strong and tough, these tow hooks are designed to be used in pairs for a tow cable or chain attachment. The tow hooks are designed for emergency towing only. Forges steel alloy tow hooks are heat treated and angled configuration to be used in pairs.



TH-10050-3L, -3R or -3B for boxed pair

Use (2) 3/4" Grade 8 bolts

TH-10050-5L, -5R or -5B for boxed pair

Use (2) 20mm Grade 8 bolts

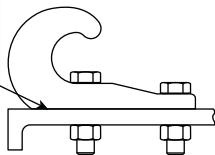
Full Face* Mount rating: 45,000 lbs. (20,410 kg)

Full Cantilevered** rating: 33,000 lbs. (14,970 kg)

Weight: 4.6 lbs. (2.1 kg) each

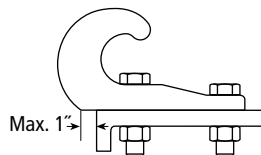
*Full Face Mount

The mounting face of the tow hook is fully supported.



**Cantilevered Mount

The mounting surface of the tow hook extends beyond the mounting structure.

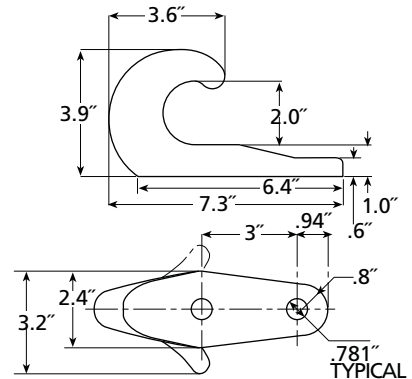


Additional Information

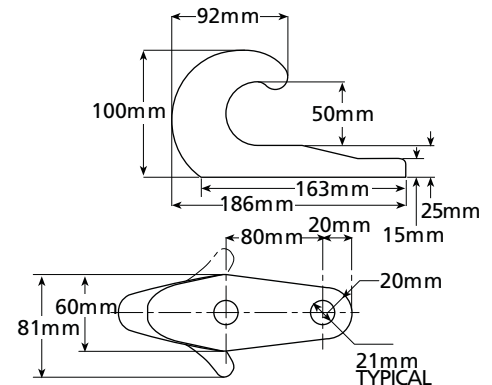
- For more product specific mounting information and operating instructions, refer to document number XL-PH-310.

Mounting Dimensions

TH-10050-3L, -3R



TH-10050-5L, -5R



Drawbar Hinge and Frame Brackets: XD-5275, XD-5315, RK-1024, XB-1020

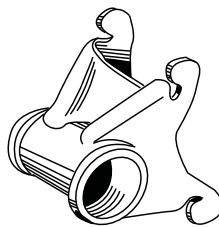
XD-5275

Description

Drawbar front bracket.
Replaces Fruehauf part FLA-005275

Capacities

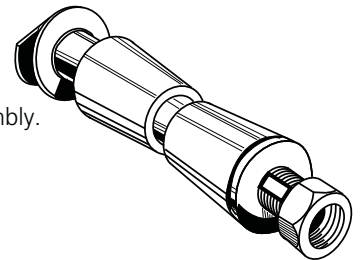
200 lbs. Maximum Vertical Load
53,000 lbs. Maximum Gross Trailer Weight



RK-1024

Description

Equalizer bushing assembly.



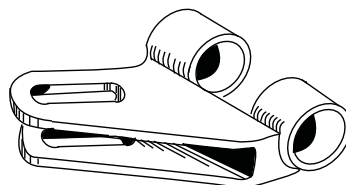
XD-5315

Description

Drawbar hinge.
Replaces Fruehauf part FCA-005315

Capacities

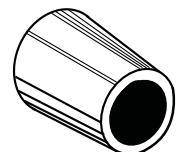
200 lbs. Maximum Vertical Load
56,000 lbs. Maximum Gross Trailer Weight



XB-1020

Description

Bushing.
Replaces Fruehauf part UXA-00000



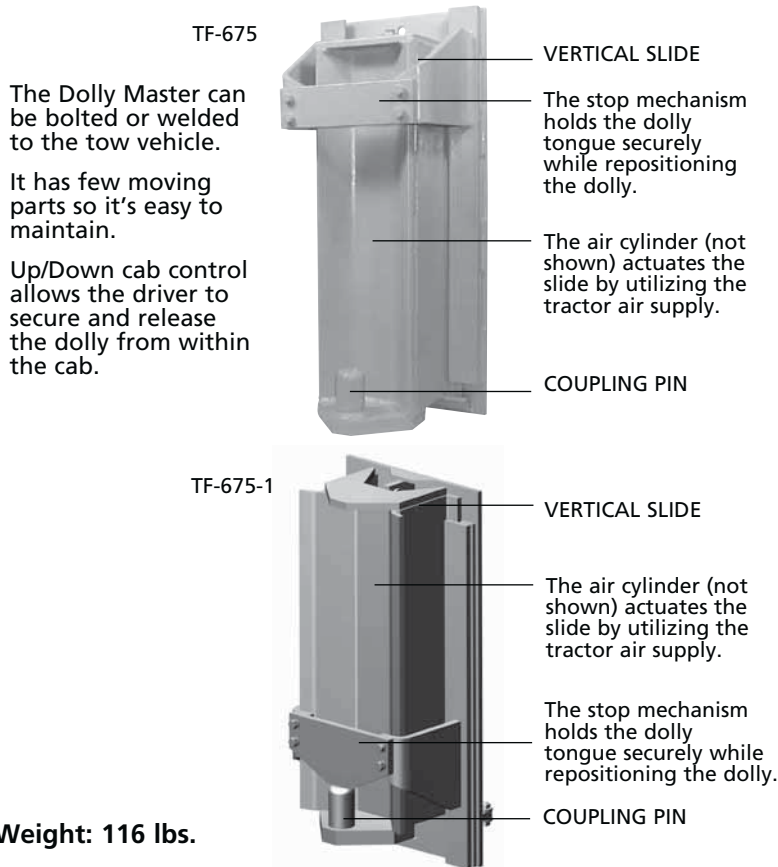
Coupling Accessories

TF-675 and TF-675-1 Dolly Master™

Application

The Dolly Master™ provides a low-cost, efficient way to **position converter dollies in the yard**. The Dolly Master is an air-operated, truck-mounted steel frame assembly that includes a vertical slide with guide ramps to which a 1.75" diameter coupling pin is attached. A double-acting air cylinder, which uses the truck's air supply, raises and lowers the slide. A control valve is operated from within the cab.

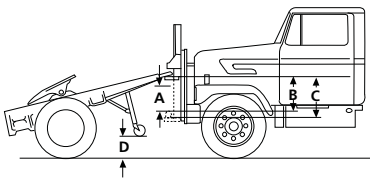
IMPORTANT: The Dolly Master is **not** intended for use in trailer spotting or coupling.



Weight: 116 lbs.

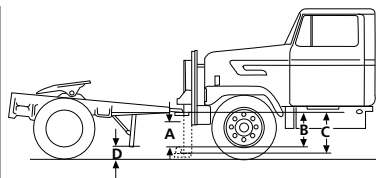
Capacities

390 lbs. (177 kg) Maximum Vertical Load
15,000 lbs. (6,800 kg) Maximum Gross Trailer Weight



TF-675

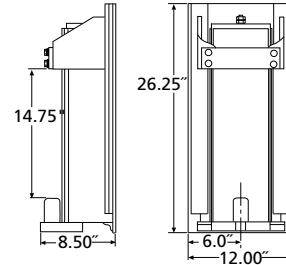
- A** Maximum drawbar elevation range: 9"
- B** 12" usable stroke
- C** 14.75" total stroke
- D** Provide adequate clearance



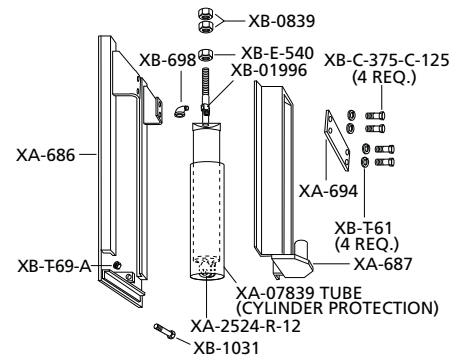
TF-675-1

- A** Maximum drawbar elevation range: 9"
- B** 12" usable stroke
- C** 14.75" total stroke
- D** Provide adequate clearance

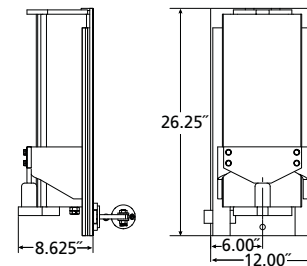
TF-675 Mounting Dimensions



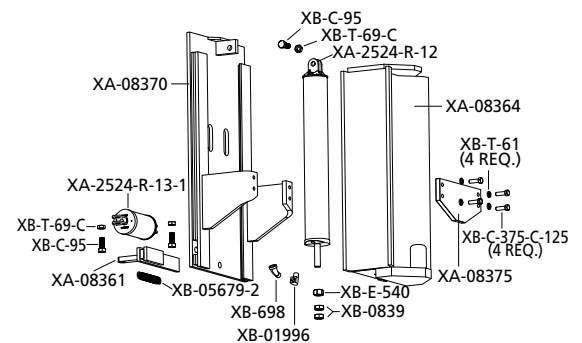
Replacements Parts



TF-675-1 Mounting Dimensions



Replacements Parts



Additional Information

- For more product specific mounting information and operating instructions, refer to document number XL-PH-240-01.



SAF-HOLLAND Group

REFERENCE SECTIONS

- Safety Information
- Warranty
- Coupling System Selection
- Operating Conditions
- Cushioning Systems
- Mounting Information
- Glossary

Introduction

In the following section of this catalog, you will notice the terms "IMPORTANT" and "WARNING" followed by important product information. Those terms are described as follows:

IMPORTANT: Included additional information that if not followed could lead to hindered product performance.

WARNING Indicates a potentially hazardous situation which, if not avoided, could result in death or serious injury.

General Safety Information

In the safety information below, you will notice the term 'WARNING' which indicates a potentially hazardous situation which, if not avoided, could result in death or serious injury.

1. Always read the Product Specification Sheet or Owner's Manual associated with each product before installation or use of the product. These manuals are shipped with each product or can be obtained from the SAF-HOLLAND website at www.safholland.us.
2. Do not modify or add to these products.
3. Never exceed the manufacturer's rated capacities of a coupling device, including Maximum Gross Trailer Weight and Maximum Vertical Load.
4. For over-the-road applications, SAF-HOLLAND recommends that a coupling device be equipped with both a primary and secondary lock.
5. For off road applications or vehicle operation over rough terrain, use a 1) swivel-mount coupling device with a rigid-mount drawbar, or 2) a rigid-mount coupling device with a swivel-mount drawbar. Never use a swivel-mount coupling device with a swivel-mount drawbar.
6. For rigid tongue trailers towed with ball, pintle hook or coupler style coupling devices, most hitch and trailer manufacturers recommend a vertical (tongue) load of 10% - 15% of the gross trailer weight (GTW). Do not tow a trailer that has a negative vertical load.

IMPORTANT: Do not weld on these products, except as specified by SAF-HOLLAND for welded installation.

WARNING Weld repairs to repair a broken part or to build-up a worn surface are strictly forbidden. Such weld repairs could locally alter the chemistry and heat treatment of the metal, alter the strength of the coupling device, or create a stress concentration that could result in structural failure resulting in death or serious injury.

8. Prior to use, always inspect a coupling device for excessive wear, cracks, bent or deformed components, secure mounting, and damaged or missing parts. Immediately inspect a coupling device which has been subjected to overload or binding due to jackknifing or excessive articulation.

WARNING Failure to inspect a coupling device prior to use could result in vehicle and trailer separation which, if not avoided, could result in death or serious injury.

9. Never strike any part of a coupling product with a hammer or other tool as parts could break.
10. Mounting bolts must be long enough to provide a minimum of two (2) full threads beyond the end of the nut. Always use ASTM Grade 8 bolts with ASTM Grade C lock nuts with hardened steel washers for installation and mounting. Torque to manufacturer's specifications and do not over-torque.

WARNING Failure to use a long enough bolt or proper fastener type for mounting could result in vehicle and trailer separation which, if not avoided, could result in death or serious injury.

11. Verify that the drawbar size is compatible with the coupling device of the tow vehicle. Refer to the 'Drawbar Compatibility Chart' located in this catalog.

12. Verify that a pintle hook latch closes and locks completely prior to use.

WARNING Failure to correctly close and lock a pintle hook latch can result in vehicle and trailer separation which, if not avoided, could result in death or serious injury.

13. Check the pintle hook latch gap, which is the space between a closed latch and the top of the pintle hook horn. If the latch gap is 0.38" (9.5mm) or larger, do not use the pintle hook.

14. Do not over-articulate a coupling connection by jackknifing or binding during vehicle operations.

WARNING Failure to avoid over-articulation of a coupling connection due to jackknifing or binding could result in failure of the coupling device(s) which, if not avoided, could result in death or serious injury.

15. Do not apply grease or other lubricants to the hook of the coupling device or drawbar eye which may trap abrasive sand and dirt which can accelerate wear in the coupling connection. Additionally, grease or other lubricants can hide cracks or damage present in coupling components.

16. Follow inspection and maintenance guidelines listed in the Product Specification Sheet or Owner's Manual available from the coupling manufacturer.



SAF-HOLLAND Group

17. Always use SAF-HOLLAND Original Parts for repair.

▲WARNING

Installation and use of non original SAF-HOLLAND parts could result in failure of the coupling device(s) which, if not avoided, could result in death or serious injury.

SAF-HOLLAND recommends that trailer and dolly manufacturers, distributors, and users be familiar with applicable national, state and local regulations governing coupling systems and safety devices such as safety chains.

Within the United States, the following is a partial list of sources for regulations and information pertaining to trailer towing:

- National Highway Traffic Safety Administration (NHTSA) – Federal Motor Carrier Safety Standards and Regulations
- National Association of Trailer Manufacturers (NATM)
- Trailer Safety Industry Coalition (TSIC)
- Society of Automotive Engineers (SAE) Design and Test Standards
- American Trucking Association (ATA) – Technology & Maintenance Council (TMC) Recommended Practices
- Truck Trailer Manufacturers Association (TTMA)

Recommended coupling and uncoupling procedures are also available from several of the above listed sources.

Warranty

Products in this catalog are covered by SAF-HOLLAND's Commercial Warranty for Coupling Products. For North America, this is a two-year parts and labor warranty. For other countries or regions, refer to the appropriate coupling products warranty available on our website.

Coupling System Selection

Gross Trailer Weight (GTW)

GTW is the weight of an empty trailer plus the weight of its maximum payload. This is shown as Gross Vehicle Weight Rating (GVWR) as specified by the trailer manufacturer and is shown on the manufacturer's identification label located on the trailer. If the label is missing or unreadable, contact the trailer manufacturer for GVWR information.

Always use the GVWR as supplied by the trailer manufacturer as the 'minimum' gross trailer weight that the coupling system is to be selected for.

If various size trailers will be towed, the trailer with the largest GVWR must be used to determine the capacity requirements of the coupling device.

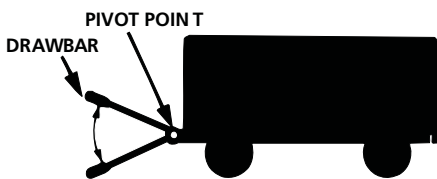
If a tow vehicle will pull multiple trailers at the same time, as with doubles, triples and road trains, the sum of the GVWRs for all towed trailers must be used to determine the capacity requirements of the coupling device.

Maximum Vertical Load

Vertical load is the upward force exerted on the drawbar eye of the trailer and the downward force exerted on the coupling device of the tow vehicle.

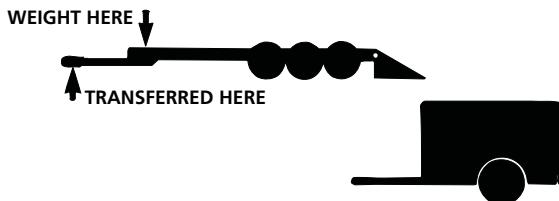
Hinged Tongue Trailer

The tongue is hinged to the trailer so that the tongue will not transfer the vertical weight of the trailer or payload to the coupling devices. The vertical load imposed on a coupling device by a hinged tongue trailer is approximately one-half of the weight of the hinged tongue/drawbar assembly only. Where vertical load on the coupling device is limited due to a hinged tongue, the maximum gross trailer weight rating for the drawbar/eye may be increased (see drawbar product pages for specific ratings).



Rigid Tongue Trailer

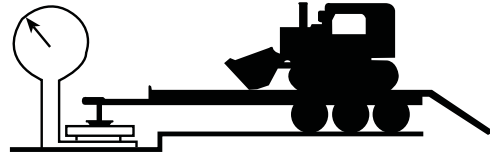
The tongue and trailer form a single rigid unit so that the vertical load measured at the drawbar eye includes the weight of the trailer and its payload. The vertical load is generally recommended to be a minimum of 10% - 15% of the maximum gross trailer weight.



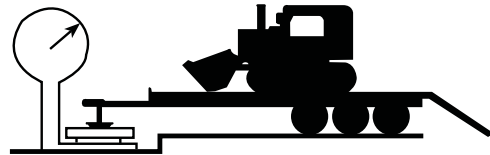
The type of load, density of the load, and placement of the load in relation to the trailer axles will have a significant effect on the vertical load at the trailer tongue. Excessive vertical loads, approaching 20% of gross trailer weight, can result in accelerated wear and over-loading of the coupling devices.

Payload Changes Vertical Load

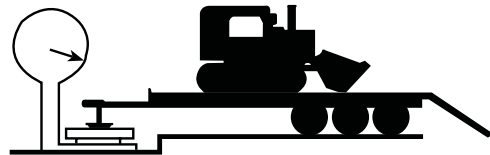
1,000 POUNDS



4,000 POUNDS



8,000 POUNDS



Drawbar Compatibility

The size of the drawbar eye (lunette) must be compatible with the coupling device of the tow vehicle. This includes the inside diameter (I.D.) of the eye and the cross-section dimension(s) of the eye. Proper eye selection will allow for adequate clearance between the eye and its mating component to help prevent binding between coupling components. If a trailer is to be pulled by more than one tow vehicle, compatibility should be checked with the coupling devices of each tow vehicle.

Over-The-Road Locking Systems

SAF-HOLLAND recommends that all couplers and pintle hooks used in over-the-road applications be equipped with both a primary lock and secondary lock. Holland FastLatch™ incorporates both the primary and secondary locks into a single integrated latch system.

Operating Conditions

Off-Road / Rough Terrain Applications

Reduction in Rated Capacities

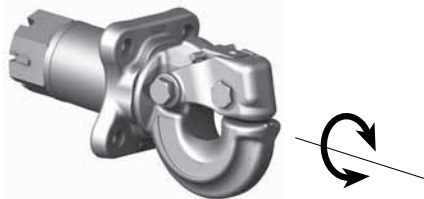
For off-road and rough terrain applications, the rated capacities (MGTW and Maximum Vertical Load) of the coupling devices for both the tow and towed vehicles should be reduced by a minimum of 25% to accommodate the increase in dynamic loading.

Example – A pintle hook rated at 100,000 lbs. (45,360 kg) MGWTW and 20,000 lbs. (9,070 kg) maximum vertical load would, for off-road applications, be rated at 75,000 lbs. (34,020 kg) MGWTW and 15,000 lbs. (6,800 kg) Maximum Vertical Load.

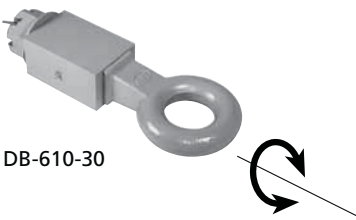
Articulation

Maximizing the range of articulation between the drawbar eye of the trailer and the coupling device of the tow vehicle is critical for good off-road performance. Holland pintle hooks are designed for maximum articulation with Holland drawbars. Other considerations include:

- A swivel-mount coupler/pintle hook or swivel-mount drawbar can further enhance articulation in off-road applications. The swivel-mount feature provides rotation to help prevent binding between the drawbar eye, coupler or pintle hook. Note however that you should never use a swivel-mount coupler/pintle hook with a swivel-mount drawbar. The two swivel-mount components could lead to over-rotation of the coupling device.
- It is important to coordinate the size of the drawbar eye with the mating component of the coupler or pintle hook. Proper sizing will allow for optimum articulation of the coupling system when driving over uneven terrain. Reference Drawbar Compatibility Chart on pages 42 – 43 for assistance in the selection process.



PH-775SL11 NoLube



DB-610-30

Cushioning Systems

Holland cushioning (shock absorption) systems include:

- **Rubber Mount**

Absorbs shock loads from hard coupling, vehicle launch and braking (reference Holland products PH-990, DB-1407-S, and DB-1407-SE).



PH-990ST71



DB-1407-S

- **Steel Spring**

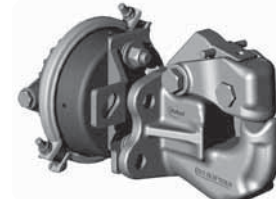
Absorbs shock loads during vehicle launch and acceleration (reference Holland products PH-30SA and PH-30SB).



PH-30SA41

- **Pneumatic Snubber**

For vehicles equipped with air systems, a snubber with force supplied by an air service chamber helps to minimize 'free play' or 'slack' between the drawbar eye and coupling device as well as absorbing shock loads during deceleration and braking (Reference Holland products PH-210, PH-300(R), PH-310, PH-400(H), PH-410, PH-419, PH-550, and DB-1400AC).



PH-210



DB-1400AC

Mounting Information

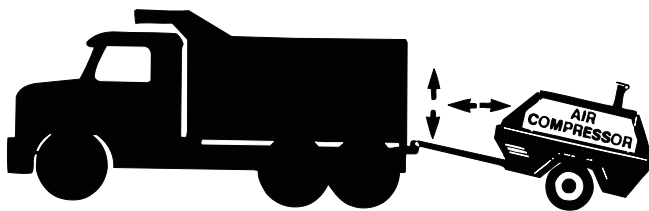
Mounting Information

Mounting Height

When mounting a coupling device, a height should be selected that results in the chassis of the towed vehicle being close to level with the ground. An offset in mounting height will create vertical and horizontal displacement of the drawbar in relation to the mating component of the coupling device. This mismatch in height will lead to accelerated wear and changes in vehicle handling.

Improper Mounting Height

(causing excessive vertical and horizontal movement)



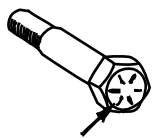
Mounting Surface

The mounting surface for a coupling device must be flat and of adequate strength to support the rated capacity of the coupling device. It must have sufficient vertical load and horizontal load capability to comply with the requirements of SAE J847.

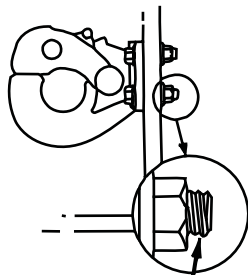
Mounting Hardware

All mounting hardware must be new ASTM Grade 8 bolts with hardened steel washers and ASTM Grade C locknuts. Bolts should be of sufficient length to provide a minimum of two (2) full threads beyond the end of the nut under recommended torque.

Proper Fastener Selection



Bolt head designation for Grade 8 is 6 equally spaced bars as show.



A minimum of 2 full threads must be exposed after proper torquing.

To develop the full rated capacity of a coupling device, all required mounting fasteners must be present with proper and equal torque applied to each fastener. Torque values and procedures should follow SAE J429 and are stated in the Owner's Manual shipped with each Holland coupling product. This information is also available online at the SAF-HOLLAND website.

ASTM

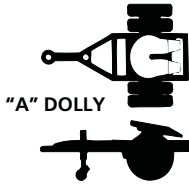
American Society for Testing and Materials

Converter Dolly / Dolly

An auxiliary axle chassis consisting of a frame with single or tandem axles, suspension, fifth wheel, and tongue with drawbar. A dolly is used to convert a semi-trailer into a full trailer.

'A' Dolly

A converter dolly with a single point of attachment to the towing vehicle; the point being located along the centerline of the dolly.



'C' Dolly

A converter dolly with two points of attachment to the towing vehicle; the points being equally spaced along the centerline of the dolly.

Drawbar

The structural member of the trailer tongue that attaches the drawbar eye or lunette to the trailer tongue. Drawbars are typically bolt-on or weld-on and are available as rigid mount or swivel mount.

Drawbar Eye / Lunette

A round 'doughnut' shaped device used to couple a trailer tongue to a towing vehicle equipped with a coupling device such as a pintle hook or coupler.

Full Trailer

A trailer equipped with two or more axles that support the entire weight of the trailer. Full trailers typically feature a hinged trailer tongue.

Gross Trailer Weight (GTW) / Maximum Gross Trailer Weight (MGTW)

The actual total weight measured at the ground of a fully loaded trailer or multiple coupled trailers. Maximum Gross Trailer Weight is the largest weight of both the trailer(s) and payload that can safely be towed by a coupling device.

Gross Vehicle Weight Rating (GVWR)

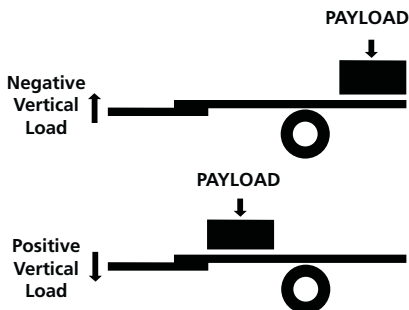
The value specified by the manufacturer as the loaded maximum weight of a single motor vehicle or trailer.

Jackknife

Over-articulation between the towing and towed vehicles (generally greater than 90 degrees) that results in binding at the coupling connection.

Negative Vertical Load

The load as an upward force measured at the drawbar located at the coupling end of the trailer tongue. A negative vertical load typically results from the payload being placed behind the trailer axle (see illustration).



Off-Road

Refers to terrain on which a towing/towed vehicle will operate which is ungraded, rough or undulating, with no maintained travel surface, generally considered to not be part of the public road system. Examples include agricultural fields, construction sites, utility right-of-way, temporary logging roads, and what is commonly referenced as 'two-track' roads.

Over-The-Road

Refers to terrain on which a towing/towed vehicle will operate which is paved or features a graded surface, generally considered to part of the public road system.

SAE

Society of Automotive Engineers

J429 - Mechanical and material requirements for externally threaded fasteners

J847 - Trailer towbar eye and pintle hook/coupler performance

Semi-trailer

A trailer, except pole trailer, so constructed that a substantial part of its weight rests upon or is carried by another vehicle or converter dolly.

Tare Weight / Unloaded Vehicle Weight (UVW)

The total weight of a vehicle at the ground, including normal fluids and equipment, in a condition to receive occupants and payload.

Trailer Tongue

The structural member of a trailer that connects to a towing vehicle.

Vertical Load / Maximum Vertical Load

The load or downward force measured at the drawbar located at the coupling end of the trailer tongue. Maximum Vertical Load is the manufacturer's recommended static vertical load (down) that can be safely applied to the coupling device.



THIS PAGE INTENTIONALLY LEFT BLANK



SAF-HOLLAND Group

THIS PAGE INTENTIONALLY LEFT BLANK



THIS PAGE INTENTIONALLY LEFT BLANK

They're called "Original Parts" for a reason!
Why trust anything else?



ORIGINAL PARTS™



FIFTH WHEELS



SUSPENSIONS



LANDING GEAR



COUPLINGS



LIFTGATES

Service parts for HOLLAND, SAF, NEWAY, and
former Binkley, Simplex, and TruckMaster Products.

From fifth wheel rebuild kits to suspension bushing repair kits, SAF-HOLLAND Original Parts are the same quality components used in the original component assembly. SAF-HOLLAND Original Parts are tested and designed to provide maximum performance and durability. Will-fits, look-alikes or worse yet counterfeit parts will only limit the performance potential and could possibly void SAF-HOLLAND's warranty. Always be sure to spec SAF-HOLLAND Original Parts when servicing your SAF-HOLLAND product.



From fifth wheel rebuild kits to suspension bushing repair kits, SAF-HOLLAND Original Parts are the same quality components used in the original component assembly. SAF-HOLLAND Original Parts are tested and designed to provide maximum performance and durability. Will-fits, look-alikes or, worse yet, counterfeit parts will only limit the performance potential and could possibly void SAF-HOLLAND's warranty.

Always be sure to spec SAF-HOLLAND Original Parts when servicing your SAF-HOLLAND product.

XL-PH103975G-en-US Rev B - 2012-02-07 - Amendments and errors reserved - © SAF-HOLLAND, Inc.

HIGH QUALITY COMPONENTS FOR THE COMMERCIAL VEHICLE INDUSTRY



EUROPE · NORTH AMERICA · SOUTH AMERICA · AFRICA · ASIA · AUSTRALIA

SAF-HOLLAND USA, Inc.
888.396.6501 Fax 800.356.3929

SAF-HOLLAND Canada Limited
519.537.3494 Fax 800.565.7753
Western Canada 604.574.7491 Fax 604.574.0244

SAF-HOLLAND Mexico
52.55.5362.8743 Fax 52.55.5362.8743

www.safholland.com

